

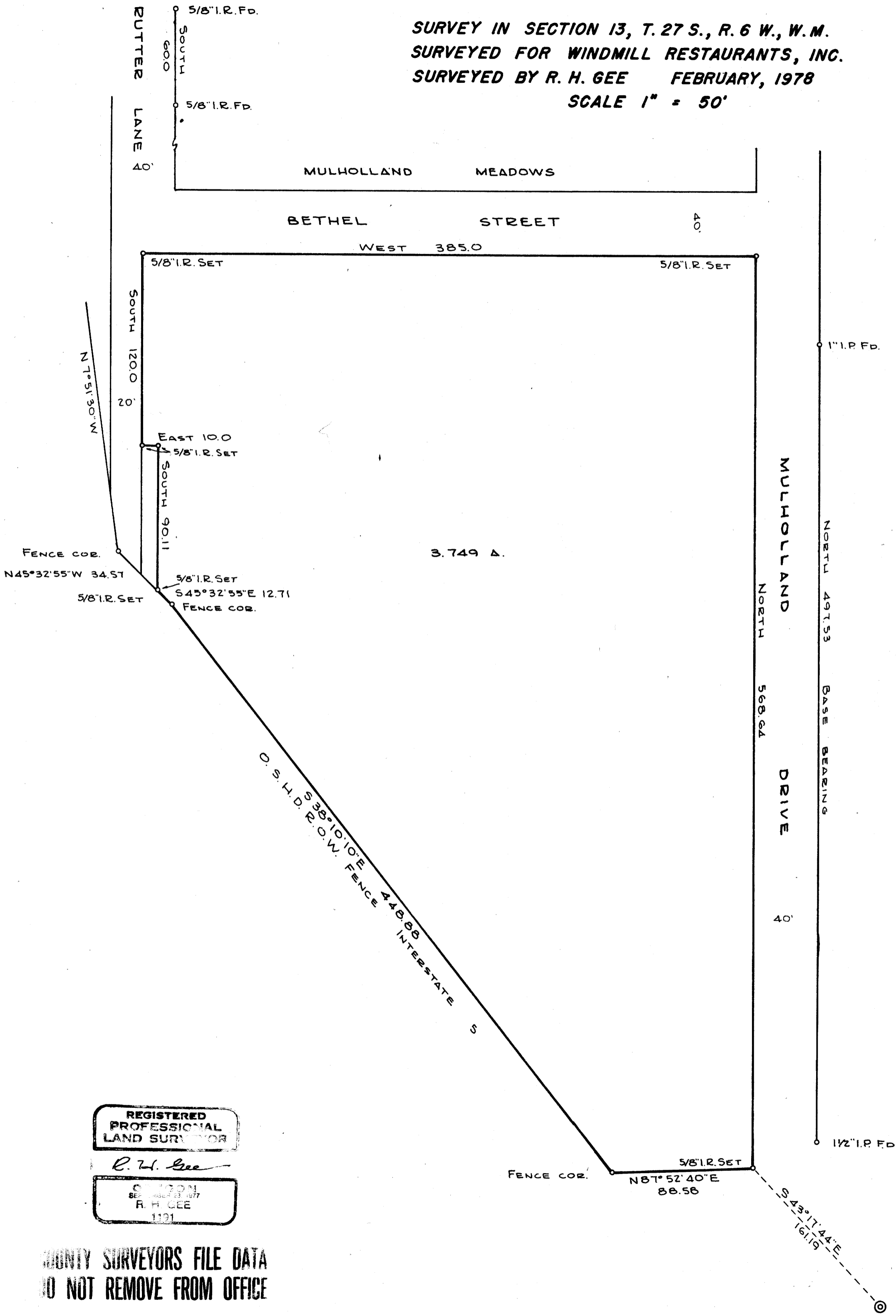
SURVEY IN SECTION 13, T. 27 S., R. 6 W., W.M.  
SURVEYED FOR WINDMILL RESTAURANTS, INC.  
SURVEYED BY R. H. GEE FEBRUARY, 1978  
SCALE 1" = 50'

FILED  
RECEIVED JHM

APR 4 1978

COUNTY SURVEYOR  
DOUGLAS COUNTY, ORE.

TS



3.749 A.

REGISTERED  
PROFESSIONAL  
LAND SURVEYOR

*R. H. GEE*

OREGON  
SEP 20 1977  
R. H. GEE  
1121

COUNTY SURVEYORS FILE DATA  
DO NOT REMOVE FROM OFFICE

NW Cor. D.L.C. No 56  
T. 27 S., R. 6 W., W.M.  
COR. OF RECORD