

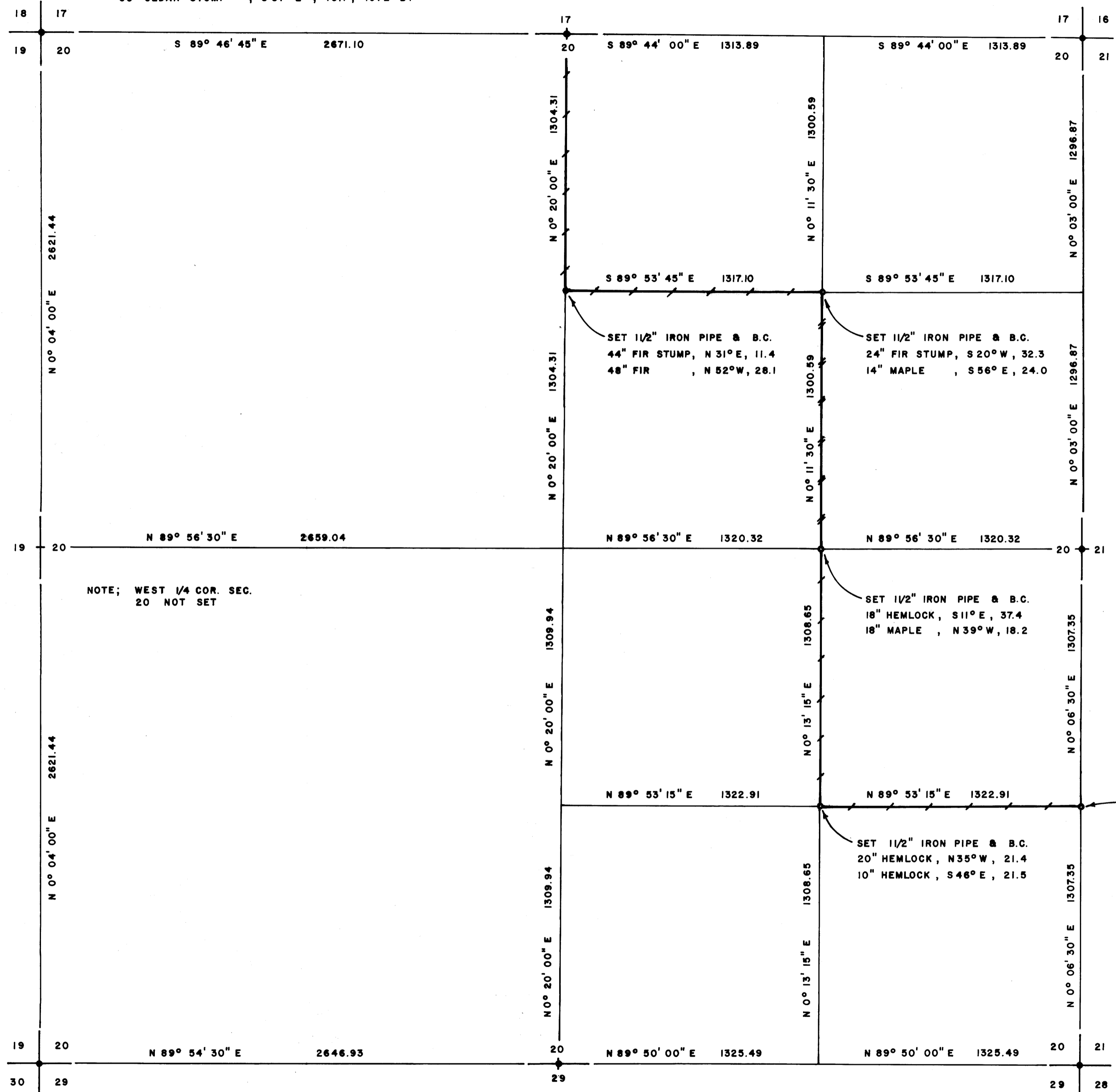
FD. DOUGLAS COUNTY BRASS CAP, 1972
 40" HEMLOCK STUMP, S 76° E, 14.5, 1894 BT
 44" HEMLOCK STUMP, N 22° W, 31.2, 1894 BT
 52" FIR STUMP, S 49° W, 45.5, 1972 BT
 30" CEDAR STUMP, S 37° E, 43.7, 1972 BT

FD. DOUGLAS COUNTY BRASS CAP, 1965
 28" DOWNED FIR, N 30° W, 59.4, 1894 BT
 16" FIR, N 8° E, 36.2, 1965 BT
 6" FIR, S 3° E, 15.4, 1965 BT

FD. DOUGLAS COUNTY BRASS CAP, 1966
 63" FIR, S 24° W, 21.8, 1894 BT
 52" FIR, N 18° W, 52.1, 1894 BT
 26" HEMLOCK, N 61° E, 19.1, 1966 BT
 20" HEMLOCK, N 37 1/2° W, 22.2, 1966 BT
 13" HEMLOCK, S 59° W, 14.9, 1966 BT

DO NOT REMOVE FROM OFFICE

FILED
 RECEIVED
 MAR 29 1979
 COUNTY SURVEYOR
 DOUGLAS COUNTY, ORE.



SURVEY OF
 SECTION 20, T23 S, R 8 W, W.M.
 DOUGLAS COUNTY, OREGON
 FOR
 INTERNATIONAL PAPER COMPANY
 BY
 TRIANGLE ENGINEERING COMPANY
 MARCH 1979
 SCALE 1" = 400'

NOTE: WEST 1/4 COR. SEC.
 20 NOT SET

FD. 3/4" IRON PIPE AND 12" x 10" x 6" STONE
 28" BURNED-OUT STUMP, N 12° E, 39.3
 NOTE: DROVE 1 1/2" IRON PIPE AND BRASS CAP
 OVER EXISTING 3/4" IRON PIPE

LEGEND:
 ● CORNERS FOUND AND USED FOR CONTROL
 ○ CORNERS SET
 --- LINES MARKED WITH RODS, TAGS AND RED RIBBON
 --- LINES MARKED WITH RED PAINTED BLAZES, RODS, TAGS AND RED RIBBON
 BASIS OF BEARING: SOLAR OBSERVATION
 DISTANCE TO BEARING TREES ARE CENTER MEASURE
 ALL BEARING TREES ARE SCRIBED

FD. DOUGLAS COUNTY BRASS CAP, 1967
 24" CHINQUAPIN, S 74° E, 17.8, 1894 BT
 16" CHINQUAPIN, N 53° W, 7.9, 1894 BT
 15" CHINQUAPIN SNAO, N 58° E, 14.5, 1894 BT
 14" DEAD CHINQUAPIN, N 83° W, 3.5, 1967 BT
 8" HEMLOCK, S 45° E, 7.7, 1967 BT
 8" HEMLOCK, N 45° E, 19.3, 1967 BT
 5" FIR, S 60° W, 23.4, 1967 BT

FD. DOUGLAS COUNTY BRASS CAP, 1966
 AND 12" x 10" x 6" STONE
 57" FIR, N 2° W, 39.6, 1894 BT
 26" CHINQUAPIN, N 36° E, 30.4, 1966 BT
 11" HEMLOCK, N 78° W, 15.8, 1966 BT

FD. DOUGLAS COUNTY BRASS CAP, 1966
 86" FIR, N 76° W, 45.5, 1894 BT
 20" HEMLOCK, S 1° E, 11.2, 1894 BT
 20" HEMLOCK, N 79° W, 13.9, 1966 BT
 19" HEMLOCK, N 54° E, 26.3, 1966 BT
 10" HEMLOCK, S 31 1/2° W, 24.4, 1966 BT
 9" HEMLOCK, S 25° E, 19.0, 1966 BT

REGISTERED
 PROFESSIONAL
 LAND SURVEYOR
 L. D. ROBERTS
 1919

MAP FILE M774 - 21

MAP FILE M774 - 21