

COUNTY SURVEYORS FILE DATA  
DO NOT REMOVE FROM OFFICE

SURVEY IN SEC. 9, T26S, R3W. W.M.

SURVEYED FOR - WM FORREST  
SURVEYED BY - W.S. BARNES

OCT. 1978

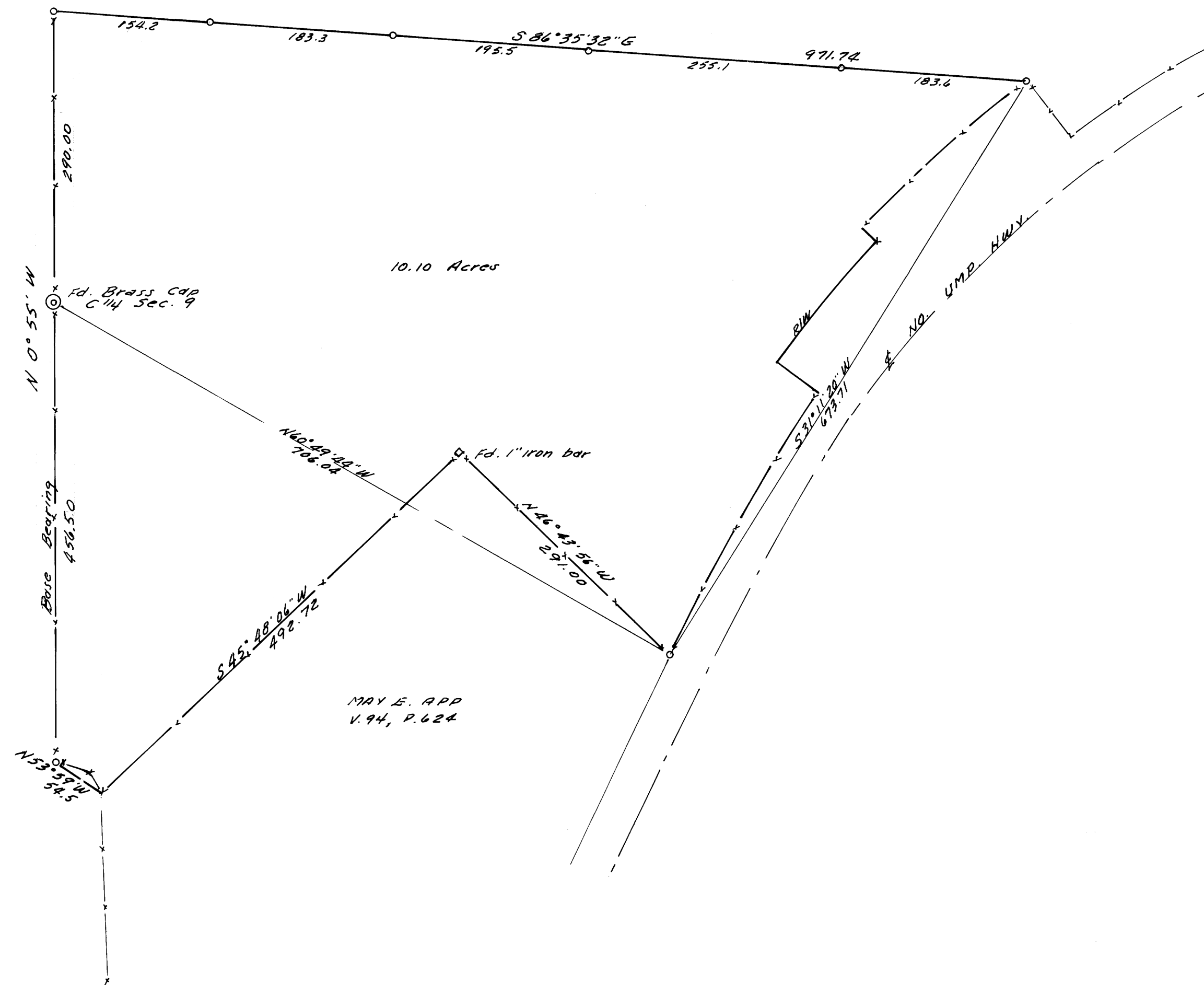
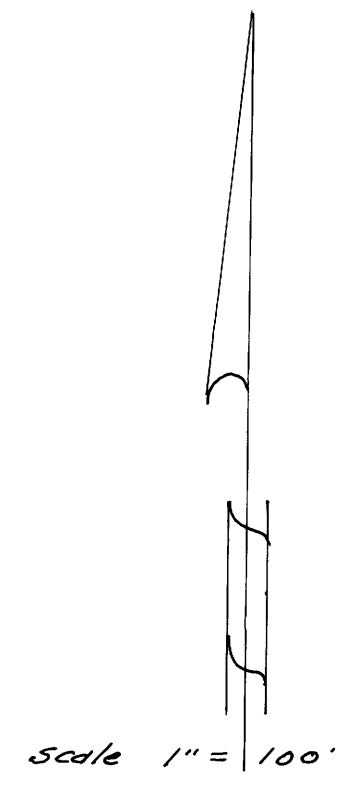
FILED  
RECEIVED

JAN 22 1979

COUNTY SURVEYOR  
DOUGLAS COUNTY, ORE.

TB

MAP FILE. M. 75 - 9



10.10 Acres

DYRMA STRADER  
INSTR. NO. 264735

MAY E. APP  
V. 94, P. 624

o Denotes 3/8" iron rods set.

MAP FILE. M. 75 - 9

REGISTERED  
PROFESSIONAL  
LAND SURVEYOR

*W. S. Barnes*

OREGON  
SEPT. 23, 1977  
WILLIAM S. BARNES  
1931