

# SURVEY FOR DESCRIPTION

IN SECTION 9 T.30S. R.4W.W.M.

COUNTY SURVEYORS FILE DATA  
DO NOT REMOVE FROM OFFICE

FOR: DEPARTMENT OF FISH & WILDLIFE  
STATE OF OREGON

BY: BAUGHMAN TECHNICAL SERVICES INC.

FEBRUARY 1979

SCALE: 1" = 100'

FILED  
RECEIVED

FEB 21 1979

COUNTY SURVEYOR  
DOUGLAS COUNTY, ORE.

18

REGISTERED  
PROFESSIONAL  
LAND SURVEYOR

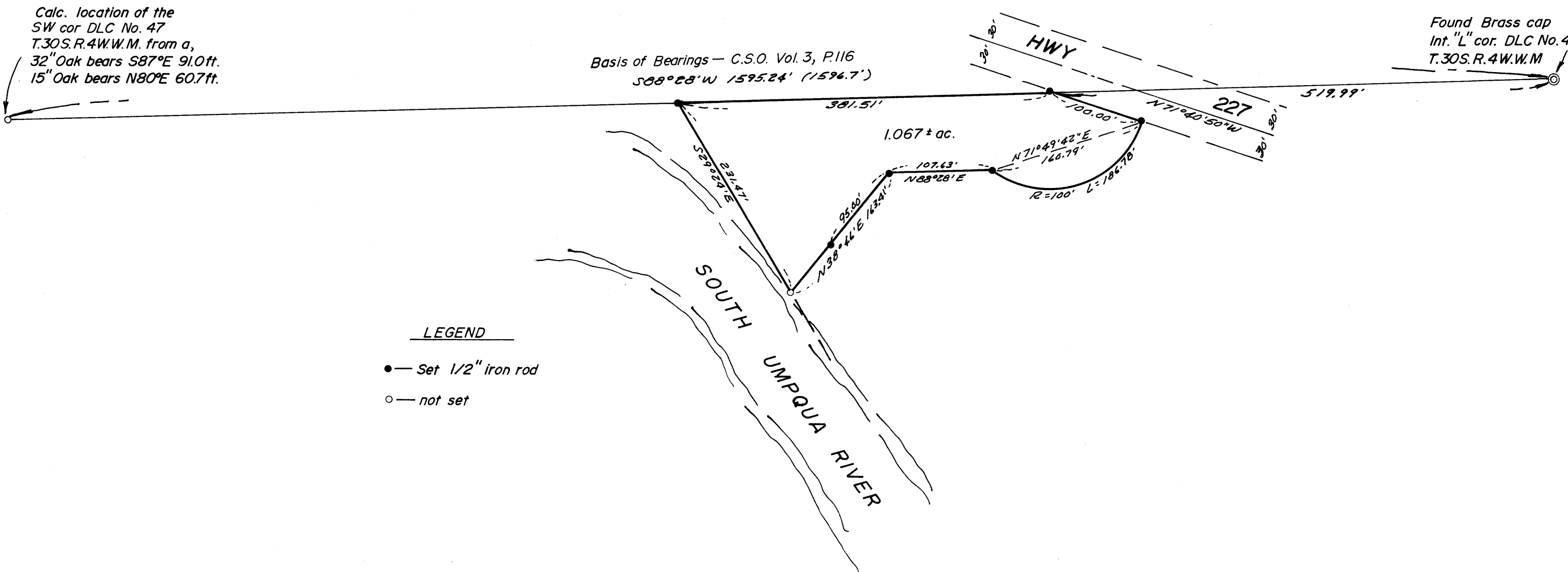
*Glenn S. Baughman*

OREGON  
JULY 14, 1961  
GLENN S. BAUGHMAN  
536

Calc. location of the  
SW cor. DLC No. 47  
T.30S.R.4W.W.M. from a,  
32" Oak bears S87°E 91.0ft.  
15" Oak bears N80°E 60.7ft.

Basis of Bearings — C.S.O. Vol. 3, P.116  
S88°28'W 1595.24' (1596.7')

Found Brass cap  
Int. "L" cor. DLC No. 47  
T.30S.R.4W.W.M.



LEGEND

- — Set 1/2" iron rod
- — not set