

COUNTY SURVEYORS FILE DATA  
DO NOT REMOVE FROM OFFICE

FILED ✓  
RECEIVED 42

SURVEY IN LOT ONE  
"SUBDIVISION OF BLOCK 3 OF SUNNYSIDE TERRACE"

FEB 20 1979

SECTION 18, T25S, R5W, W.M. SUTHERLIN, ORE.

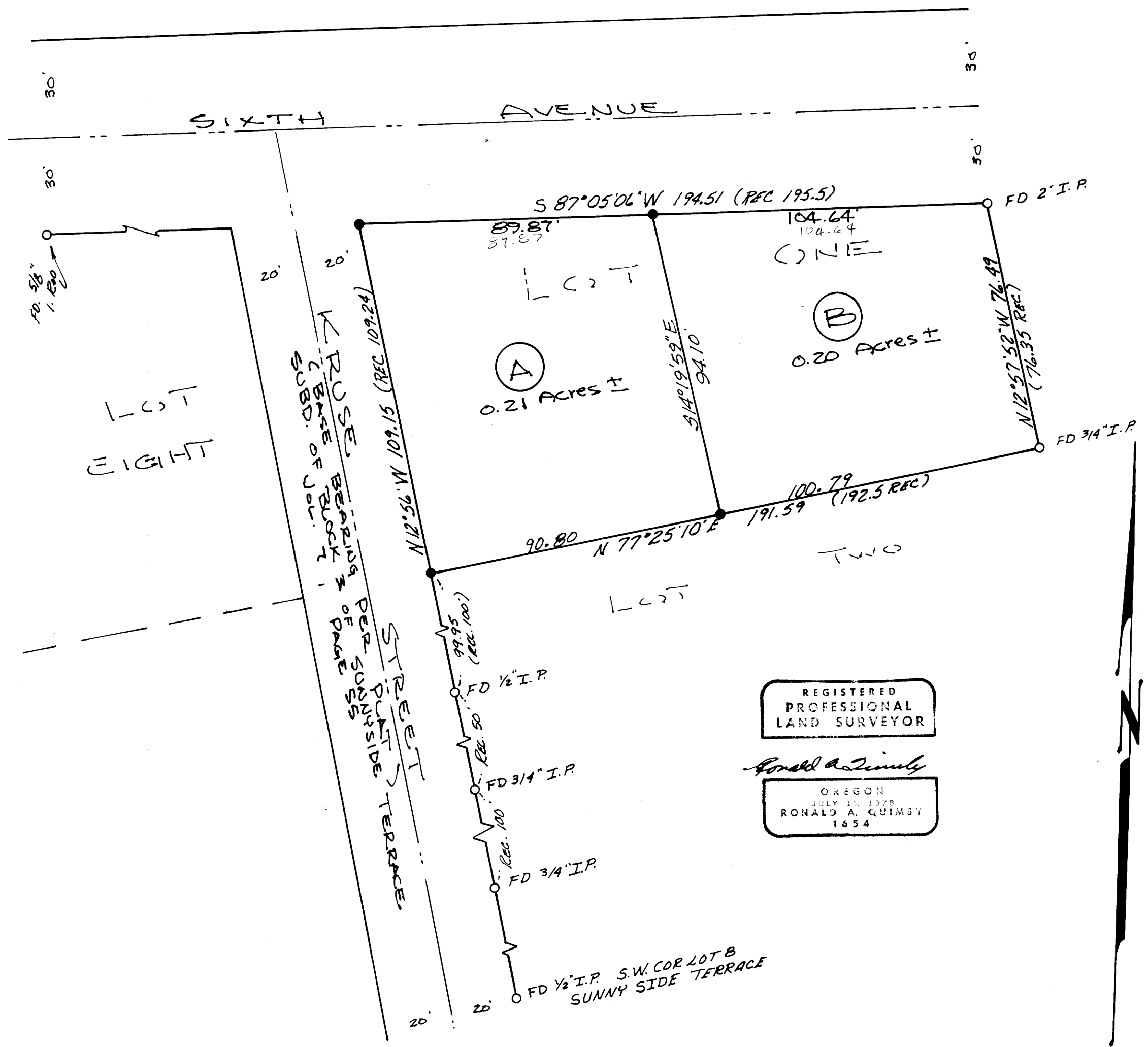
CITY SURVEYOR  
CLATSOP COUNTY, ORE.  
TB

SURVEY FOR MARK VINCENT & ERNIE ANDERSON  
SURVEY BY BHW ENG. & SURVEYING, INC.

FEB., 1979

SCALE: 1" = 30'

- — SET 5/8" I. ROD
- — FD. MONUMENT AS NOTED.



REGISTERED  
PROFESSIONAL  
LAND SURVEYOR

*Ronald A. Quimby*

OREGON  
JULY 11, 1978  
RONALD A. QUIMBY  
1654