

Survey of Deed Description No. 78-17146

for

CIRCLE K CORPORATION, 3104 Turner Road, Salem, OR, 97302

in

D.L.C. No. 47 (Sec. 23 & 24), T30S, R6W, W.M., City of Riddle, Douglas County, Oregon

prepared by

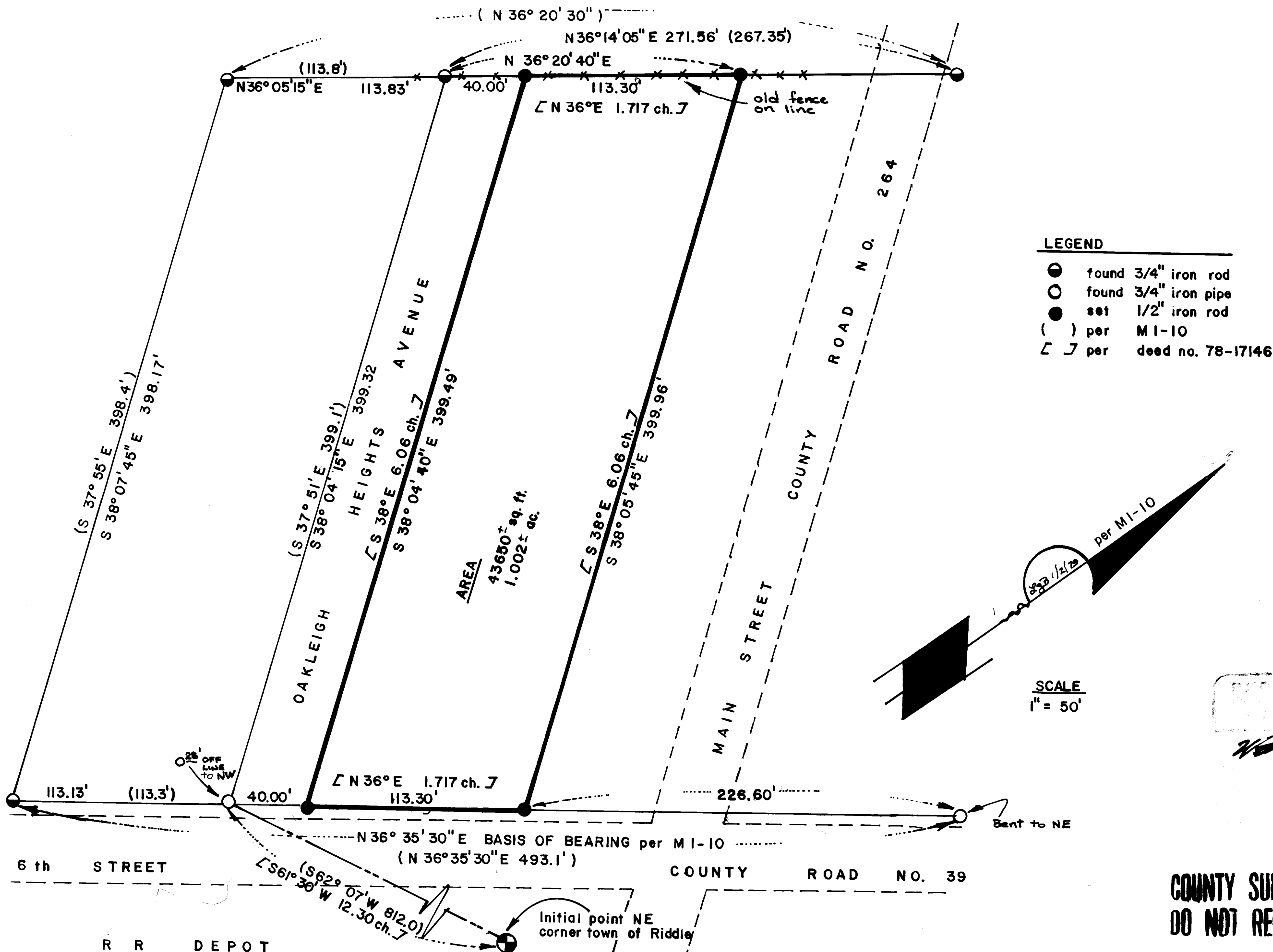
**UMPQUA SURVEYING CO. Myrtle Creek, OR
JANUARY 1979**

FILED
RECEIVED

JAN 15 1979

COUNTY SURVEYOR
DOUGLAS COUNTY, ORE.

MAP FILE M. 75-5



COUNTY SURVEYORS FILE DATA
DO NOT REMOVE FROM OFFICE

MAP FILE M. 75-5