

COUNTY SURVEYORS FILE DATA
DO NOT REMOVE FROM OFFICE

FILED ✓
RECEIVED ✓
FEB 7 1979
COUNTY SURVEYOR
CLATSOP COUNTY, ORE

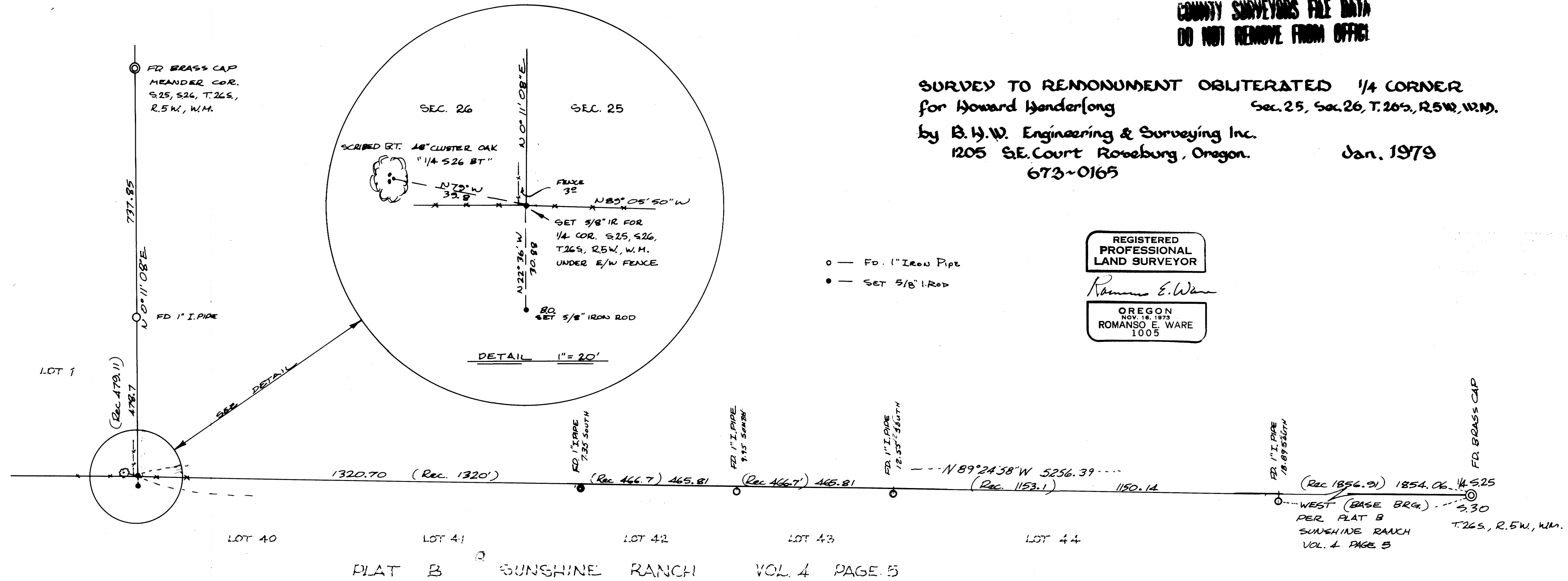
SURVEY TO REINSTATEMENT OBLITERATED 1/4 CORNER
for Howard Henderlong
Sec. 25, Sec. 26, T.26S., R.5W., W.M.
by B.H.W. Engineering & Surveying Inc.
1205 S.E. Court Roseburg, Oregon.
673-0165
Jan. 1979

REGISTERED
PROFESSIONAL
LAND SURVEYOR

Romans E. Ware

OREGON
NOV. 18, 1973
ROMANSO E. WARE
1005

- — Fd. 1" Iron Pipe
- — SET 5/8" I. ROD



SCALE 1" = 200'

MAP FILE M 75-38