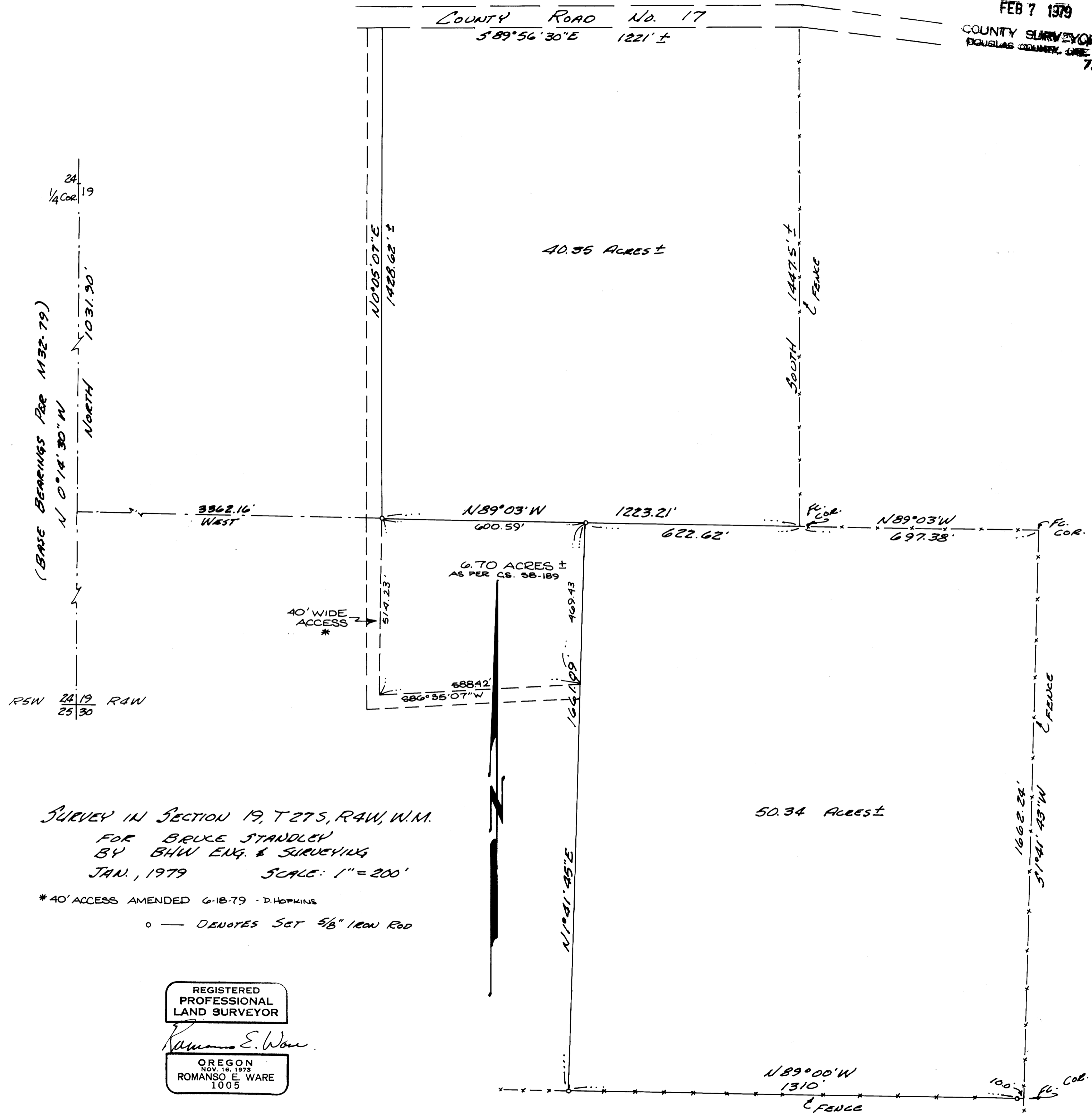


COUNTY SURVEYORS FILE DATA  
DO NOT REMOVE FROM OFFICE

FILED &  
RECEIVED *DR*  
FEB 7 1979  
COUNTY SURVEYOR  
DOUGLAS COUNTY, ORE.  
78



SURVEY IN SECTION 19, T27S, R4W, W.M.  
FOR BRUCE STANDLEY  
BY BHW ENG. & SURVEYING  
JAN., 1979 SCALE: 1" = 200'

\* 40' ACCESS AMENDED 6-18-79 - D. HOPKINS  
o — DENOTES SET 5/8" IRON ROD

REGISTERED  
PROFESSIONAL  
LAND SURVEYOR

*Romanso E. Ware*

OREGON  
NOV. 16, 1973  
ROMANSO E. WARE  
1005