

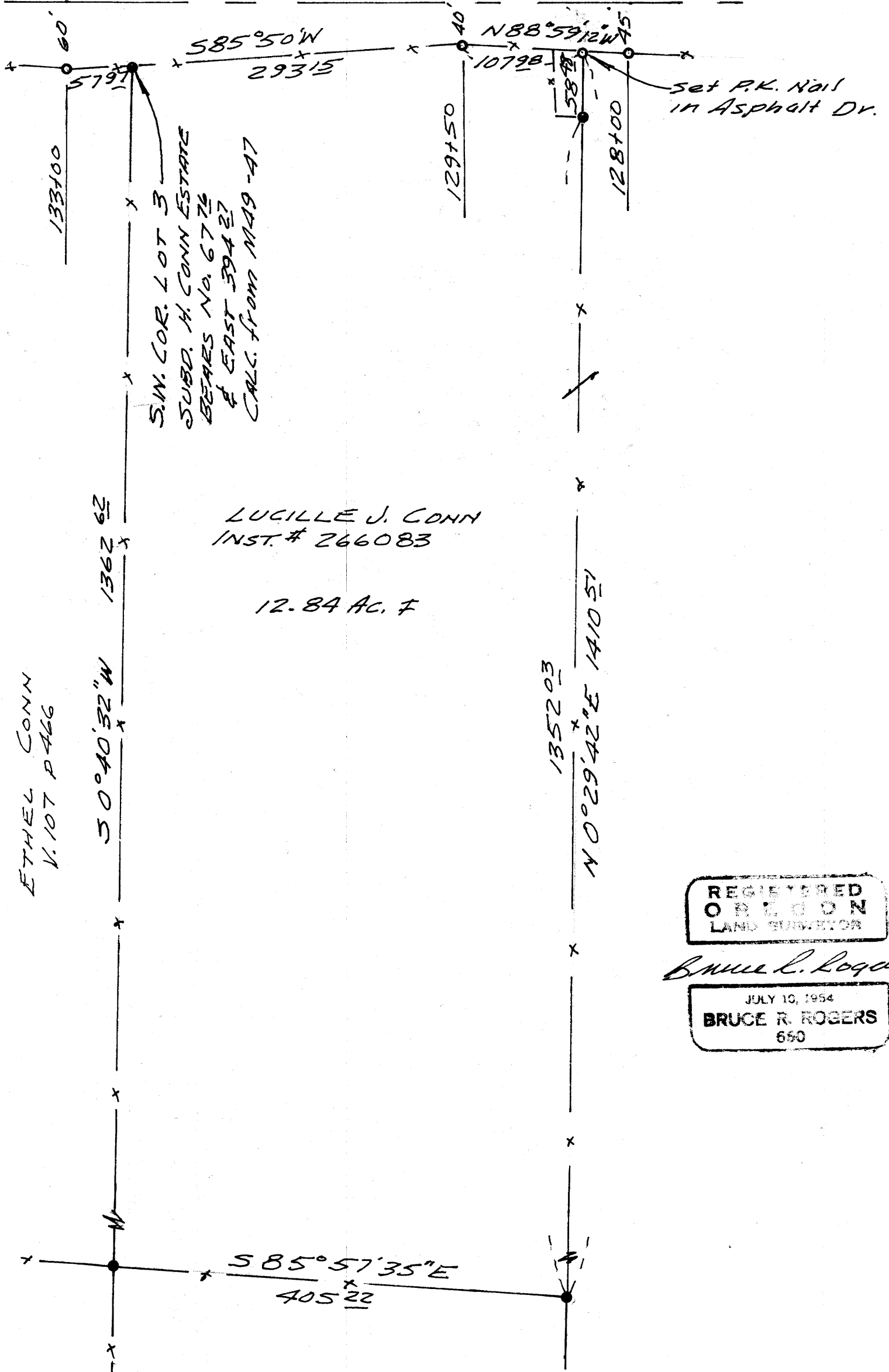
COUNTY SURVEYORS FILE DATA
DO NOT REMOVE FROM OFFICE

FILED ✓
RECEIVED 88

JAN 31 1979

COUNTY SURVEYOR
DOUGLAS COUNTY, OR.
TP

CONN'S FORD CO. RD. #167 589°06'15"W



S.W. COR. LOT 3
SUBD. H. CONN ESTATE
BEARS NO. 6776
& EAST 39427
CALC. FROM MAG -47

LUCILLE J. CONN
INST. # 266083

12.84 AC. ±

ETHEL CONN
V.107 P.466

REGISTERED
ORIGON
LAND SURVEYOR

Bruce R. Rogers

JULY 10, 1954
BRUCE R. ROGERS
660

- - FD. R/W MONUMENT
- - SET 5/8" IRON ROD

SURVEY FOR DEED DESCRIPTION
IN THE N.E. 1/4 OF SECTION 8, T. 27S., R. 6 W. W.M.
FOR BLAKE CONN
BY BRUCE ROGERS
1" = 100' JAN., 1979
Bearings Based on So. R/W Co. Rd. #167