

COUNTY SURVEYORS FILE DATA
DO NOT REMOVE FROM OFFICE

FILED ✓
RECEIVED JHH

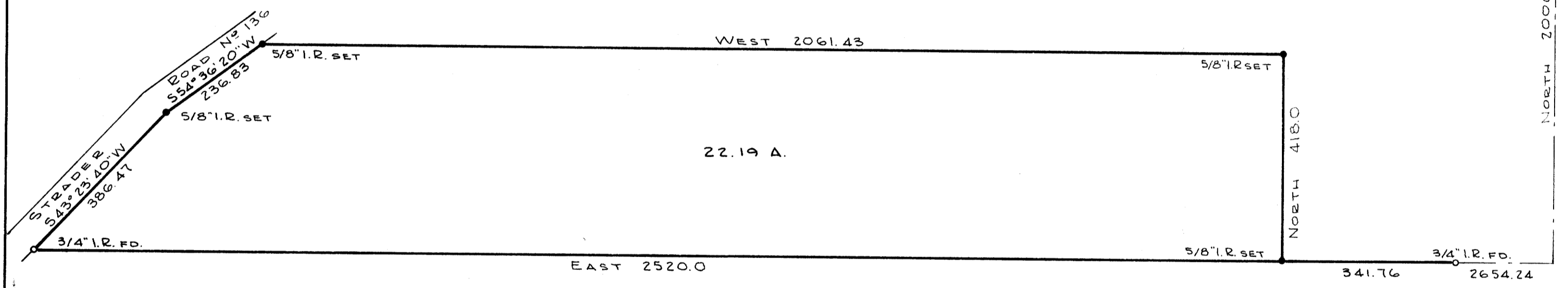
JAN 29 1979

COUNTY SURVEYOR
DOUGLAS COUNTY, ILL.

SURVEY IN SECTIONS 20 AND 21, T. 27 S., R. 4 W., W. M.
SURVEYED FOR MARY SEGAL
SURVEYED BY R. H. GEE JANUARY, 1979
SCALE 1" = 200'

NE COR. SECTION 21
T. 27 S., R. 4 W., W. M.
COR. OF RECORD

NORTH 2000.0



BEARINGS BASED ON M 39-71

REGISTERED
PROFESSIONAL
LAND SURVEYOR
R. H. GEE
COUNTY SURVEYOR
DOUGLAS COUNTY, ILL.
1979

MAP FILE M 25-22

MAP FILE M 25-22