

# MAJOR LAND PARTITION

IN SECTION 15, T.28S. R.6W. W.M.

JANUARY 1979

SCALE: 1"=100'

FILED  
RECEIVED

JAN 24 1979

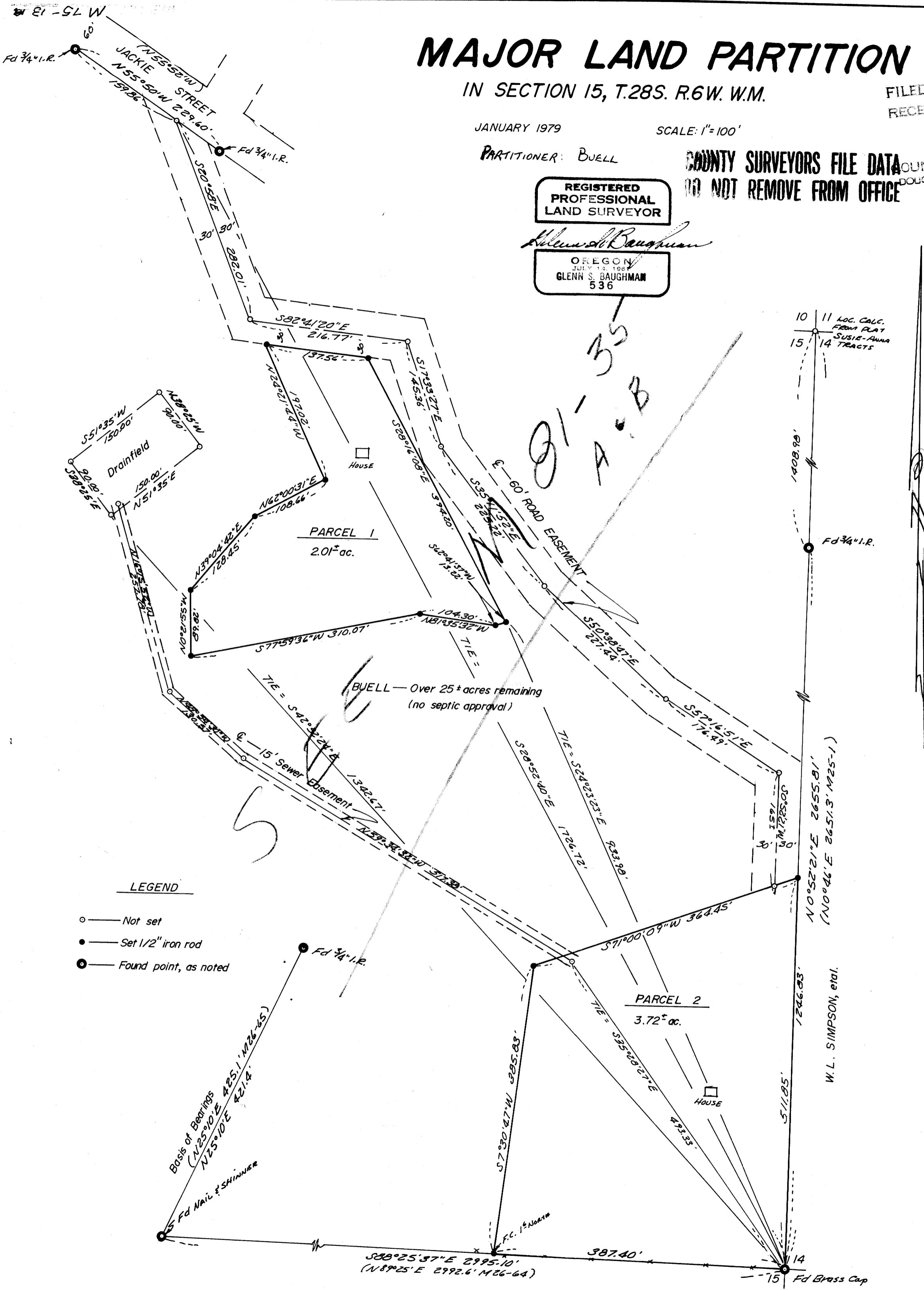
PARTITIONER: BUELL

COUNTY SURVEYORS FILE DATA  
DO NOT REMOVE FROM OFFICE  
COUNTY SURVEYOR  
DOUGLAS COUNTY, ORE.  
TB

REGISTERED  
PROFESSIONAL  
LAND SURVEYOR

*Glenn S. Baughman*

OREGON  
JULY 12, 1981  
GLENN S. BAUGHMAN  
536



LEGEND

- — Not set
- — Set 1/2" iron rod
- ⊙ — Found point, as noted

Basis of Bearings  
(N 25° 10' E 425.1' M 26-65)  
N 25° 10' E 421.4'  
S - Fd Nail & SHINNER

N 0° 52' 21" E 2655.81'  
(N 0° 46' E 2651.3' M 25-1)

W. L. SIMPSON, et al.

S 88° 25' 37" E 2995.10'  
(N 8° 25' E 2992.6' M 66-64)

ESCOBAR

SHEET 1 OF 2

MAP FILE M 75-13 A  
FM 5-181

Bt + 0958B