

SURVEY FOR DESCRIPTION

IN LOTS 1 & 2 TODD BUILDING COMPANY SUBDIVISION NO. 2
SECTION 17, T.27S. R.5W. W.M. - JANUARY 1979 - SCALE: 1"=50'

8/2/81
20
28

FOR: KIT CHAN

BY: BAUGHMAN TECHNICAL SERVICES INC.

FILED ✓
RECEIVED TB

JAN 21 1979

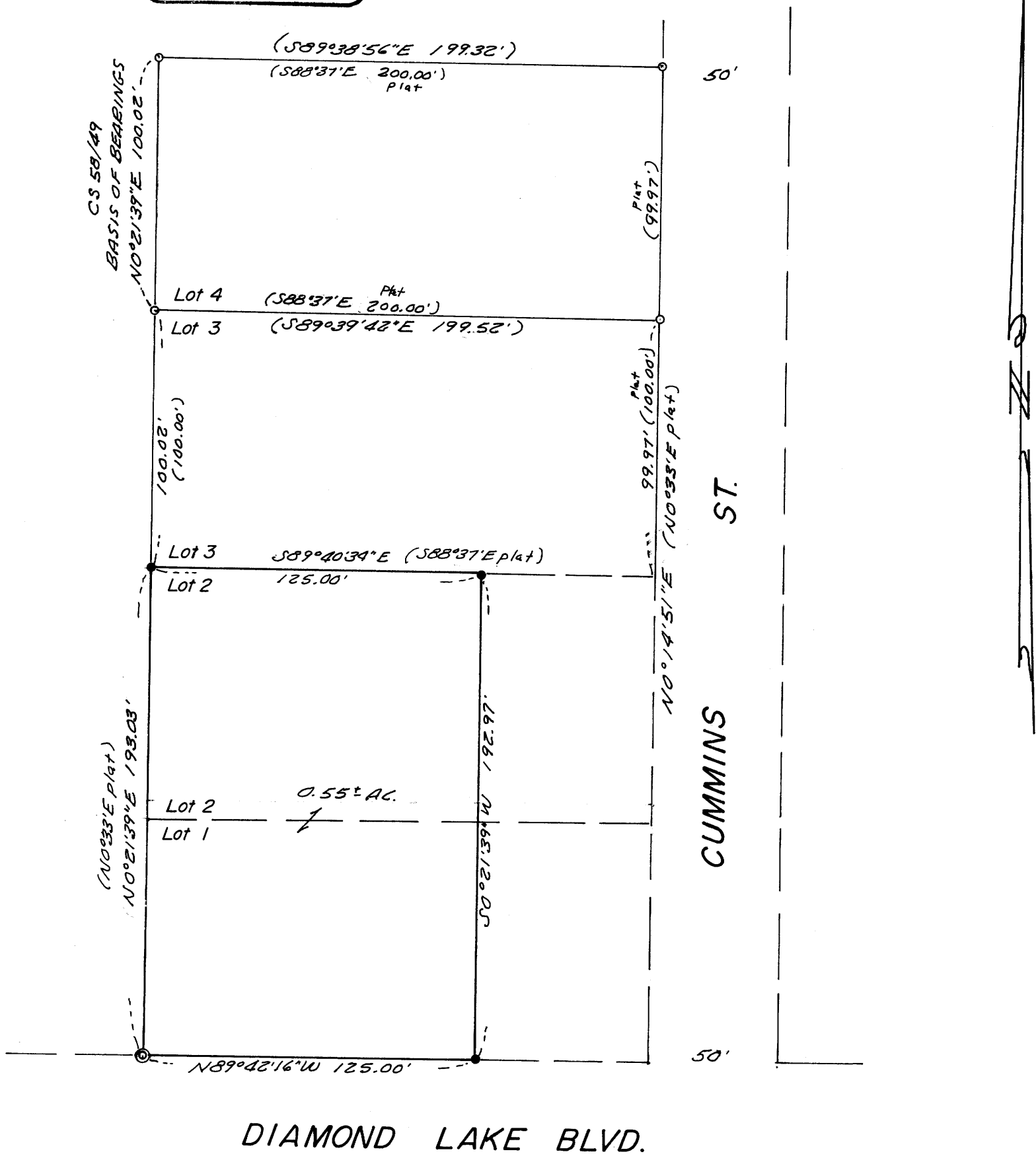
COUNTY SURVEYOR
CLATSOP COUNTY, ORE.

TB

REGISTERED
PROFESSIONAL
LAND SURVEYOR

Glenn S. Baughman

OREGON
JULY 14, 1951
GLENN S. BAUGHMAN
536



COUNTY SURVEYORS FILE DATA
DO NOT REMOVE FROM OFFICE

FM 4-817