

MAP FILE M74-79

EASEMENT SURVEY OF  
WINCHESTER BAY SANITARY DIST. OUTFALL LINE  
IN SEC. 12 T. 22 S., R. 13 W., W.M  
DOUGLAS COUNTY, OREGON

COUNTY SURVEYORS FILE DATA  
DO NOT REMOVE FROM OFFICE

FOR:  
WINCHESTER BAY SANITARY DIST.  
P.O. BOX 97  
WINCHESTER BAY, OR. 97469

FILED  
RECEIVED

BY:  
STUNTZNER ENGINEERING & FORESTRY  
P.O. BOX 118  
COOS BAY, OR 97420

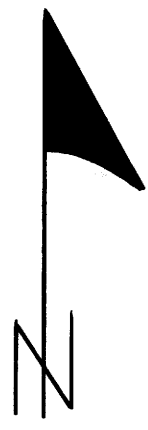
JAN 9 1979

COUNTY SURVEYOR  
DOUGLAS COUNTY, ORE.

LEGEND:

- ⊙ FOUND 5/8" IRON RODS ( C.S. 55/322)
- MAN HOLES
- EXISTING OUTFALL LINE
- - - ABANDONED OUTFALL LINE

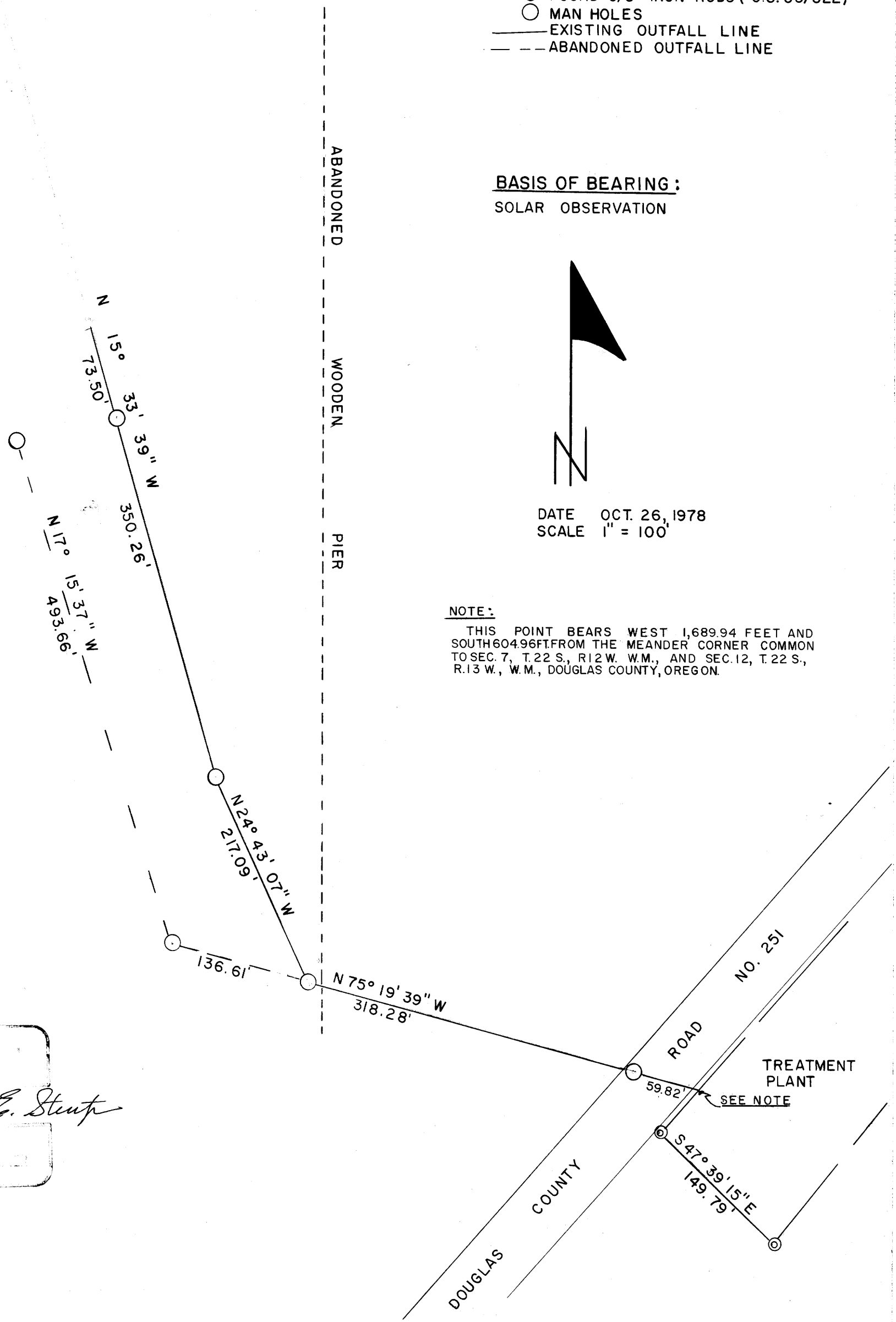
BASIS OF BEARING:  
SOLAR OBSERVATION



DATE OCT. 26, 1978  
SCALE 1" = 100'

NOTE:

THIS POINT BEARS WEST 1,689.94 FEET AND SOUTH 604.96 FT. FROM THE MEANDER CORNER COMMON TO SEC. 7, T. 22 S., R. 12 W. W.M., AND SEC. 12, T. 22 S., R. 13 W., W.M., DOUGLAS COUNTY, OREGON.



Ronald E. Stutz  
COUNTY SURVEYOR

MAP FILE M74-79