

COUNTY SURVEYORS FILE DATA  
DO NOT REMOVE FROM OFFICE

MAP SHOWING  
ROAD LOCATION AND FENCE ENCROACHMENT  
IN S.E. 1/4, SEC. 36, T. 22 S., R. 13 W., W.M.  
DOUGLAS COUNTY, OR.

FILED *dh*  
RECEIVED *dh*

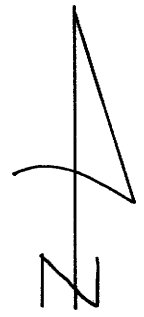
JAN 9 1979

COUNTY SURVEYOR  
DOUGLAS COUNTY, ORE.  
*TH*

MAP FILE M74-788

FOR:  
ELMER AND WANDA HONN  
12261 WILDWOOD DR.  
NORTH BEND, OR 97420

BY:  
STUNTZNER ENGINEERING AND FORESTRY  
P.O. Box 118  
COOS BAY, OR 97420



SCALE 1"=20'  
DATE JAN. 5, 1979

LEGEND:

- ⊙ FOUND MONUMENTS (AS NOTED)
  - SET MONUMENTS (1/2" I. RODS)
- BASIS OF BEARINGS: SOLAR OBSERVATION

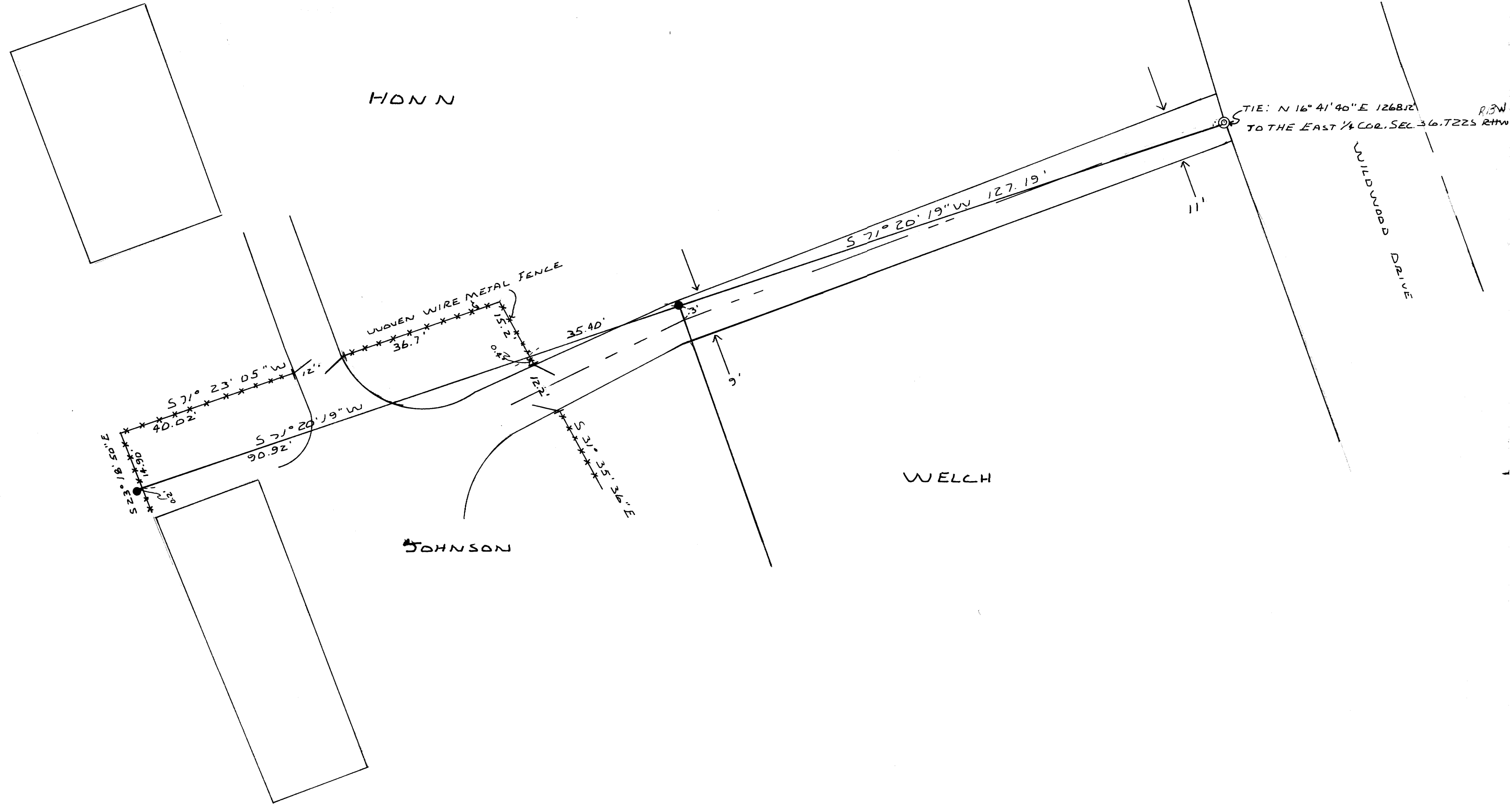
NOTE:

SEE SURVEY MAP BY STUNTZNER ENGINEERING  
AND FORESTRY DATED JAN 4, 1979

REGISTERED  
PROFESSIONAL  
LAND SURVEYOR

*Ronald E. Stuntzner*

OREGON  
SEPTEMBER 23, 1917  
RONALD E. STUNTZNER  
1342



MAP FILE M74-788