

COUNTY SURVEYORS FILE DATA
DO NOT REMOVE FROM OFFICE

FILED
RECEIVED

OCT 19 1978

COUNTY SURVEYOR
DOUGLAS COUNTY, ORE.

RECORD OF SURVEY

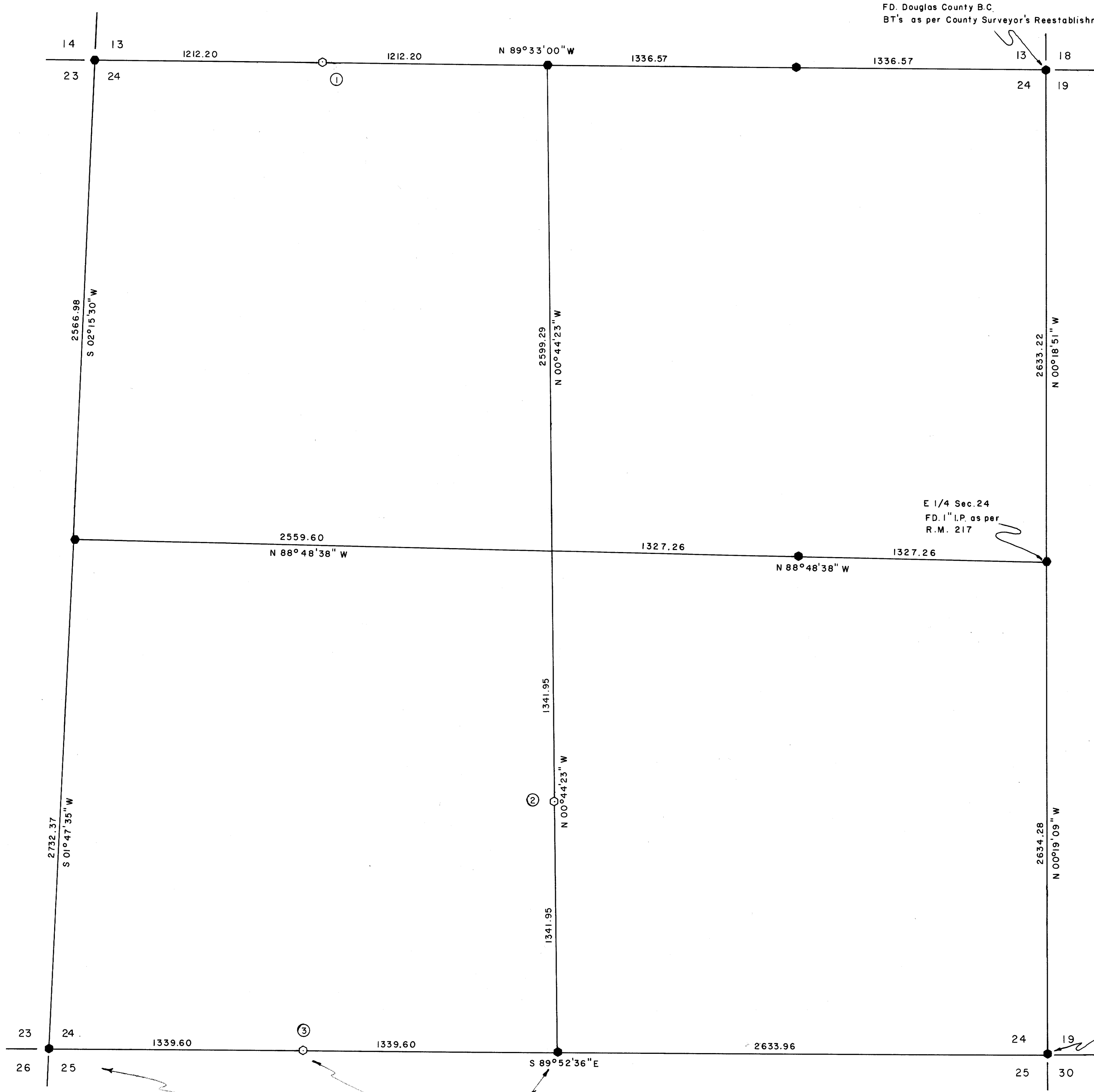
For GUSTINA BROTHERS

in SECTION 24, T 21 S, R 5 W, W.M.

DOUGLAS COUNTY, OREGON OCTOBER, 1978

78

FD. Douglas County B.C.
BT's as per County Surveyor's Reestablishment



① W 1/16 Corner Section 24

Set 3/4" iron pipe. Corner falls 15 feet south of an East-West fence, and 40 feet West of a small creek.

BT's set
18" Fir, S 10 1/2° W, 21.6 Ft., Scribed "W 1/16 S 24 BT"
16" Fir, N 18 3/4° W, 32.3 Ft., Scribed "W 1/16 S 13 BT"

② CS 1/16 Corner Section 24

Set 3/4" iron pipe. Corner falls 300 feet East of a spur road.

BT's set
28" Fir, N 69° W, 46.3 Ft., Scribed "CS 1/16 S 24 BT"
16" Fir, S 65 1/2° E, 21.5 Ft., Scribed "CS 1/16 S 24 BT"

③ W 1/16 Corner Section 24

Set 3/4" iron pipe. Corner falls 30 feet East of an old logging road and 50 feet West of a small creek. Corner is also 2 feet North of an East-West fence.

BT's set
14" Fir, S 23° W, 31.7 Ft., Scribed "W 1/16 S 25 BT"
18" Hemlock, N 11 1/2° E, 49.0 Ft., Scribed "W 1/16 S 24 BT"

- 3/4" iron pipe found, except as noted (3/4" iron pipes found were set as per M-65-47)
- 3/4" iron pipe set

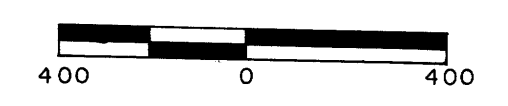
References

- R.M. 247
- M-65-47

REGISTERED
PROFESSIONAL
LAND SURVEYOR

JIM S. PETERSON
OREGON
JULY 31, 1976
JIM S. PETERSON
1064

Scale 1" = 400'



FD. stone set by Banlau at fence corner
BT's as per 1958 County Surveyor's Reestablishment

ERRONEOUS CORNERS
PER B.L.M. SEE DEPENDENT
RESURVEY COMPLETED APR. 22, 1998
(GROUP NO 1814)

MAP FILE M 74-74

MAP FILE M 74-74