

COUNTY SURVEYORS FILE DATA
DO NOT REMOVE FROM OFFICE

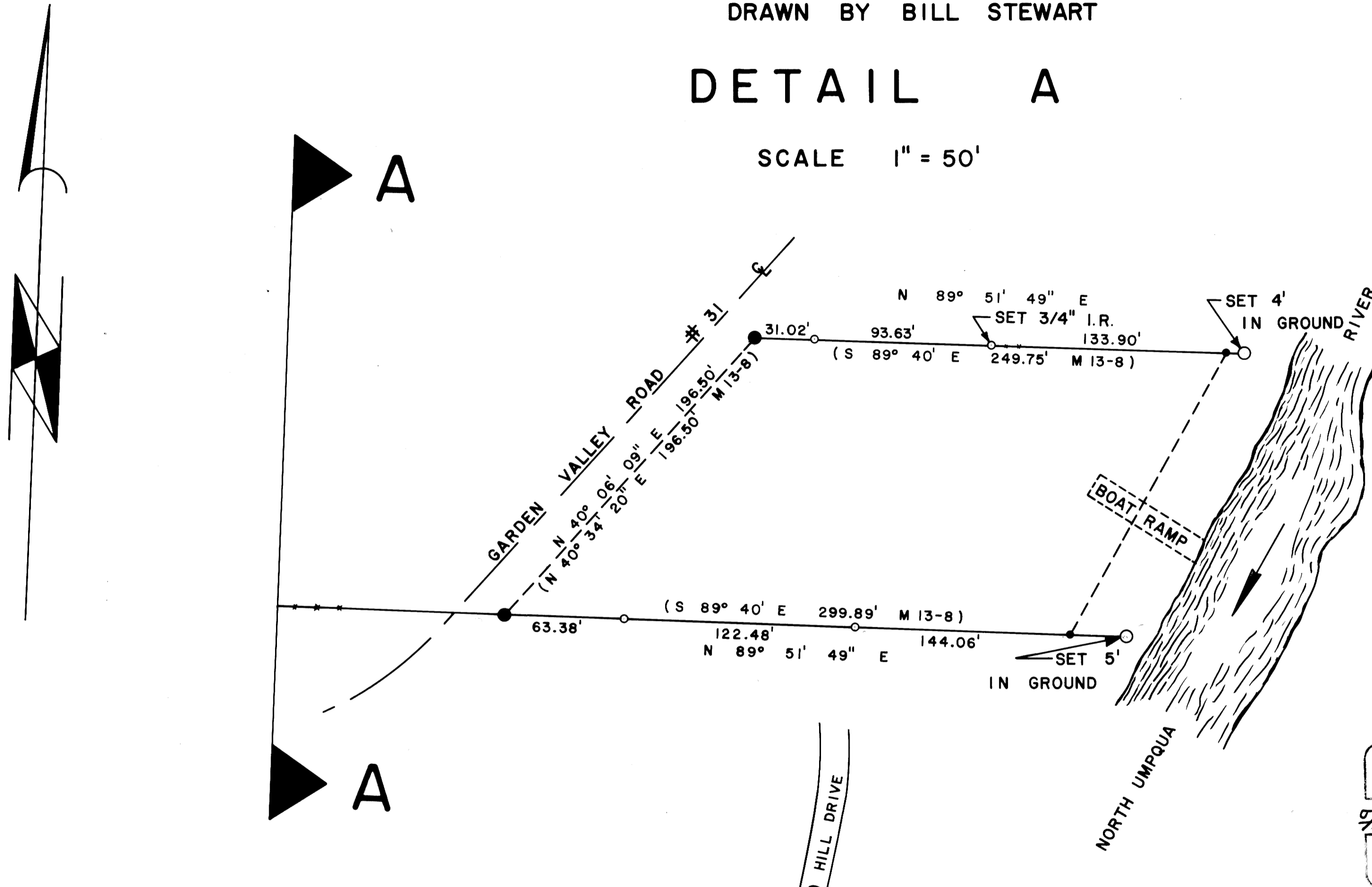
SEC. 27 & 28, T. 26 S., R. 6 W., W.M.
FOR DOUGLAS CO. PARKS DEP'T.

BY DOUGLAS COUNTY SURVEYOR'S OFFICE
FRANCIS L. INGRAM COUNTY SURVEYOR

DECEMBER 26, 1978
DRAWN BY BILL STEWART

DETAIL A

SCALE 1" = 50'



LEGEND

- SET 5/8" I. R. (EXCEPT AS NOTED)
- COMPUTED - NOT SET
- ⊙ SET BOAT SPIKE
- SET 5' STEEL FENCE POST
- ⊙ FD. D.L.C. CORNER
- ⊙ MON. FD. AS NOTED

NOTE: Bearings And Distances Shown Are True.
Survey Based On The Oregon State Plane
Coordinate System, South Zone, Using
The Following Control Station:

NU-3	602,782.327 1,225,537.068
NU-4	602,666.209 1,228,538.431

REGISTERED
PROFESSIONAL
LAND SURVEYOR
Francis L. Ingram
OREGON
FRANCIS L. INGRAM
502

SEE RENEWAL NO. 124
FD. 24" BLACK OAK FROM WHICH
NW COR. D.L.C. #42 BEARS
N 24° E 75.7-FT.
FD. 20" BLACK OAK FROM WHICH
NW COR. D.L.C. #42 BEARS
N 15° W 30.5-FT.

1/2" I.P. 42.02'
NORTH OF D.L.C. LINE
(3309.04' M 13-8)
1" I.P. 20.0'
NORTH OF D.L.C. LINE
(M 1-69)
7099.13' (S 89° 40' E M 1-69)
717.68' (N 89° 51' 49" E)
398.12' (S 89° 40' E M 13-8)
292.42' (S 89° 40' E M 13-8)

SCALE 1" = 200'

SOUTH LINE HENRY EVANS D.L.C. #43

HENRY EVANS D.L.C. #43
GEO. HANNA D.L.C. #42

U.S. File No. 60/22
MAP FILE MW-73

U.S. File No. 60/22
MAP FILE MW-73

CS FILE NOT SCANNED

SUPPORT DATA FOR SURVEY