

COUNTY SURVEYORS FILE DATA  
 DO NOT REMOVE FROM OFFICE  
 PROPERTY SURVEY FOR MENASHA CORPORATION

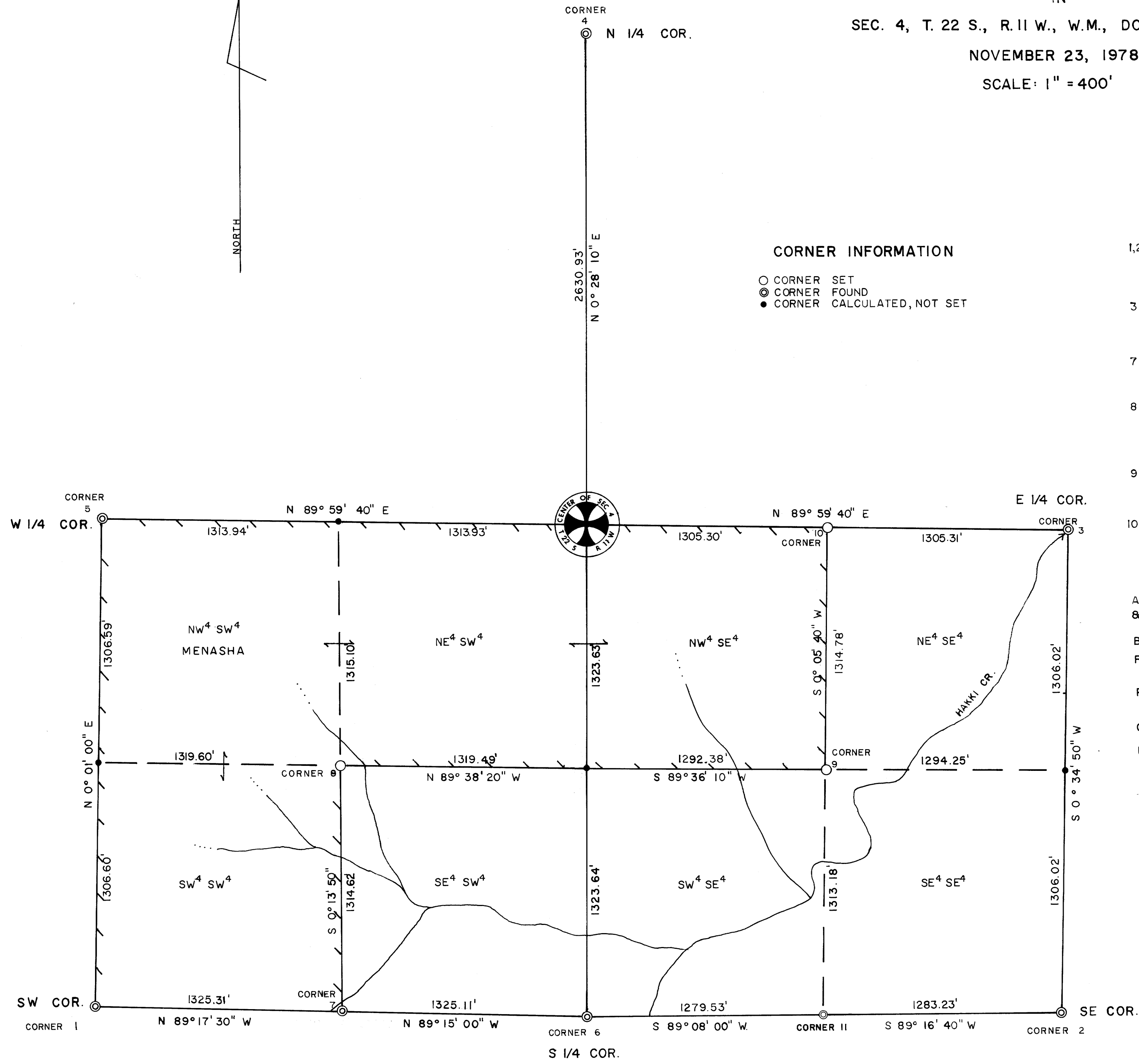
IN  
 SEC. 4, T. 22 S., R. 11 W., W.M., DOUGLAS COUNTY, ORE.

NOVEMBER 23, 1978

SCALE: 1" = 400'

FILED  
 RECEIVED  
 COUNTY SURVEYOR  
 DOUGLAS COUNTY, ORE.

MAP FILE M 74-65



CORNER INFORMATION

- CORNER SET
- ⊙ CORNER FOUND
- CORNER CALCULATED, NOT SET

1,2,4,5,6,11 FOUND AS PER COUNTY RECORDS, ALL HAVING O.S.B.F. P/C WITH W.P.C.P. & SAID B.T.'S

3 FOUND BT & B.O. FOR WITNESS CORNER AS PER COUNTY RECORDS

7 FOUND O.S.B.F. P/C & 1 B.O.

8 SET 5/8" X 30" I.R. FROM WHICH A 8" W.R.C., N 9° E, 18.8' SCRIBED 14" FIR, N 45° W, 21.8' SCRIBED

9 SET 5/8" X 30" I.R. FROM WHICH AN IRON FENCE POST, N 52° W, 5.0' 2" FIR, S 10° E, 17.8'

10 SET 5/8" X 30" I.R. FROM WHICH A 20" FIR, N 78° W, 26.1' SCRIBED 4" DOGWOOD, N 5° W, 4.9' SCAR

ALL DISTANCES MEASURED FROM CENTER OF TREE & ALL B.T.'S POSTED WITH METAL TAGS

BASIS OF BEARING: 1971 SURVEY BY A.G. GIBSON AS FILED IN DOUGLAS CO. RECORDS MAP FILE M 44-34

PROPERTY LINES SHOWN BLAZED & PAINTED

CORNERS SET IN ACCORDANCE WITH BUREAU OF LAND MANAGEMENT'S 1973 MANUAL OF SURVEY INSTRUCTIONS.

REGISTERED  
 PROFESSIONAL  
 LAND SURVEYOR

*Thomas J. Hoesly*

OREGON  
 AUG 22 1975  
 THOMAS J. HOESLY  
 1030

MAP FILE M 74-65