

PROPERTY SURVEY FOR MENASHA CORPORATION

COUNTY SURVEYORS FILE DATA  
DO NOT REMOVE FROM OFFICE

FILED  
RECEIVED

DEC 22 1978

COUNTY SURVEYOR  
DOUGLAS COUNTY, ORE.

IN

SECTION 33, T. 22 S., R. 12 W., W.M., DOUGLAS CO., ORE.

DATE: DECEMBER 20, 1978

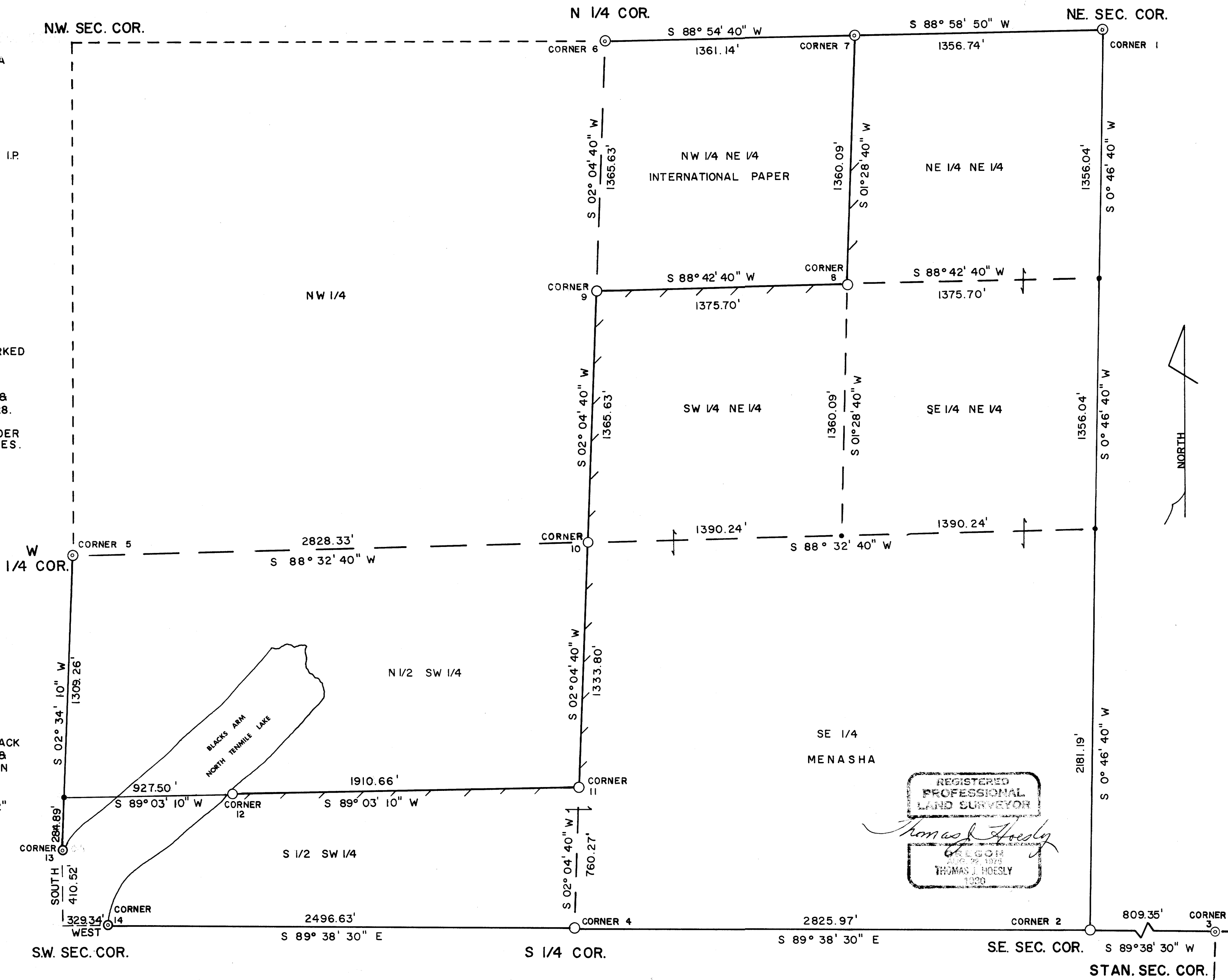
SCALE: 1" = 400'

BASIS OF BEARING: WARREN-KNIGHT STAFF COMPASS

CORNER INFORMATION

- CORNER SET
- ⊙ CORNER FOUND
- CORNER CALCULATED, NOT SET

- 1 NE. SEC. COR., FOUND AS PER COUNTY RECORDS, HAVING OSBF PC WITH W.C.P. & SAID BT'S, SET BY GIBSON IN 1969. DOUGLAS CO. CORNER RECORD # 55.
- 2 SE. SEC. COR., SET A 2" X 36" GALV. I.P. FROM WHICH BEARS A 20" CHERRY, N 33° E, 18.4' SCRIBED  
70" HEMLOCK, S 53° E, 75.4' SCRIBED  
34" HEMLOCK, S 79° 30' W, 38.0' SCRIBED  
4" HEMLOCK, N 49° 30' W, 25.3' BLAZED
- 3 STAN. SEC. COR., FOUND AS PER COUNTY RECORDS, HAVING 3/4" I.P. & SAID BT'S.
- 4 S 1/4 COR., SET A 1" X 36" I.P. FROM WHICH BEARS A 30" FIR, N 40° E, 19.2' SCRIBED  
10" W.R.C. S 48° E, 9.5' SCRIBED  
12" W.R.C. S 40° W, 13.3 SCRIBED  
20" FIR, N 73° W, 4.3' SCRIBED
- 5 W 1/4 COR., FOUND AS PER COUNTY RECORDS, HAVING I.P. WITH B.C. & SAID BT'S, SET BY B. SHANER IN 1977, MAP FILE M 66-30.
- 6 N 1/4 COR., FOUND AS PER COUNTY RECORDS, HAVING MARKED SANDSTONE FOR CORNER, C.S. FILE 51/61.
- 7 E. 1/16 COR., FOUND AS PER COUNTY RECORDS, HAVING I.P. & SAID BT, SET BY W. HOOTMAN IN 1962, M 22-28.
- 8 N.E. 1/16 COR., SET 6d ALUMINIUM NAIL IN BASE OF 14" ALDER SET WITNESS COR., A 5/8" I.R. & ACCESSORIES.  
3" SPRUCE, S 73° W, 11.6' BLAZED  
10" HEMLOCK, N 8° W, 29.8' SCRIBED
- 9 CN. 1/16 COR. SET A 5/8" I.R. FROM WHICH BEARS A 30" SPRUCE, N 86° E, 49.0' SCRIBED  
12" ALDER, S 32° E, 6.7' SCRIBED
- 10 C. 1/4 COR. SET A 5/8" I.R. FROM WHICH BEARS A 34" SPRUCE, N 32° E, 39.9' SCRIBED  
6" W.R.C., S 25° W, 43.6' SCRIBED  
16" ALDER, N 52° W, 42.6' SCRIBED
- 11 C.S. 1/16 COR., SET A 5/8" I.R. FROM WHICH BEARS A 6" HEMLOCK, EAST, 4.8' SCRIBED  
20" HEMLOCK, S 3° E, 3.0' SCRIBED  
8" HEMLOCK, N 26° W, 10.45' SCRIBED
- 12 PROP. COR. SET A 5/8" I.R. FROM WHICH BEARS A 10" W.R.C., N 16° E, 19.8' SCRIBED  
10" W.R.C., S 86° W, 23.2' SCRIBED
- 13 M.C. FOUND AS PER COUNTY RECORDS, HAVING TACK ON RR TIE & WITNESS COR. HAVING I.P. & B.C. WITH SAID BT'S SET BY B. SHANER IN 1977, MAP FILE M 66-30.
- 14 M.C. FOUND AS PER COUNTY RECORDS, HAVING 2" I.P. & SAID BT'S, MAP FILE M 66-30.



ALL DISTANCES TO BT'S ARE MEASURED FROM THE CENTER OF THE TREE & ALL BT'S POSTED WITH METAL TAGS.  
PROPERTY LINES SHOWN BLAZED & PAINTED  
CORNERS SET IN ACCORDANCE WITH BUREAU OF LAND MANagements 1973 MANUAL OF SURVEY INSTRUCTIONS.

MAP FILE M 74 - 67

MAP FILE M 74 - 67