

SURVEY FOR DESCRIPTION

IN SECTION 2 T25S R4WWM

FOR: SELMAR HUTCHINS
 BY: BAUGHMAN TECHNICAL SERVICES INC.

NOVEMBER 1978 — SCALE: 1"=200'

COUNTY SURVEYORS FILE DATA
 DO NOT REMOVE FROM OFFICE

FILED
 RECEIVED

DEC 1 1978

COUNTY SURVEYOR
 DOUGLAS COUNTY, ORE.

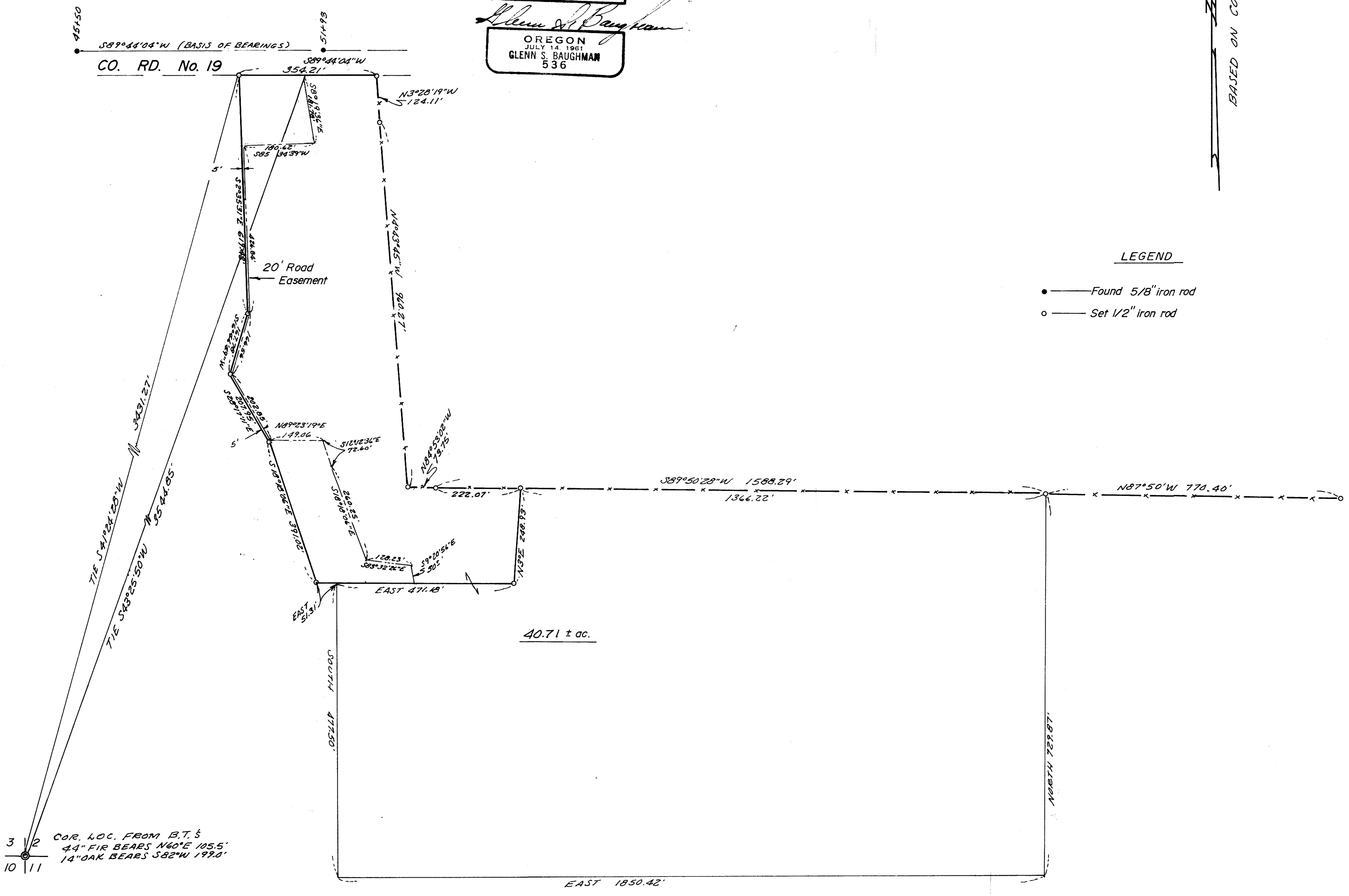
MAP FILE M 74-57

REGISTERED
 PROFESSIONAL
 LAND SURVEYOR

Glenn S. Baughman

OREGON
 JULY 14, 1961
 GLENN S. BAUGHMAN
 536

BASED ON CO. ROAD No. 19



LEGEND

- — Found 5/8" iron rod
- — Set 1/2" iron rod

MAP FILE M 74-57