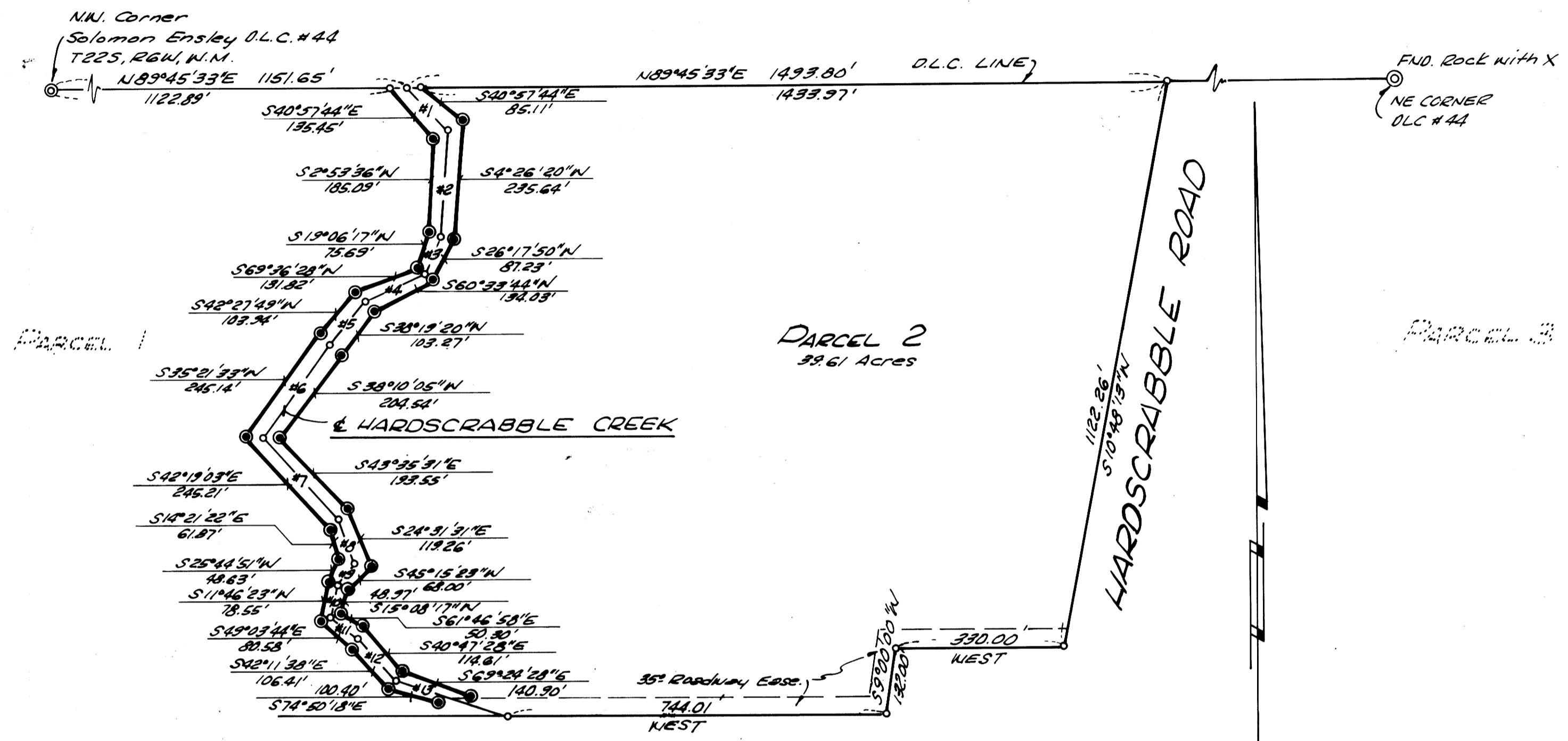


FILED ✓  
RECEIVED 1/8

COUNTY SURVEYOR  
DOUGLAS COUNTY, ORE.

DON CHURCHILL  
39.6 ACRE PARCEL



Beginning at a point N 89° 45' 35" E a distance of 1151.65 feet from the Northwest corner of the Solomon Ensley Donation Land Claim No. 44 in Section 1, Township 22 South, Range 6 West, Willamette Meridian, said point being on the North line of said D.L.C. and in the center of Hardscrabble Creek; thence Southerly along the center of Hardscrabble Creek the following courses: S 46° 32' 05" E a distance of 121.0 feet; thence S 3° 45' 24" W a distance of 210.3 feet; thence S 22° 57' 47" W a distance of 81.3 feet; thence S 65° 02' 44" W a distance of 132.5 feet; thence S 40° 23' 58" W a distance of 103.5 feet; thence S 36° 38' 16" W a distance of 224.8 feet; thence S 42° 52' 45" E a distance of 219.4 feet; thence S 21° 03' 29" E a distance of 90.2 feet; thence S 37° 08' 15" W a distance of 57.5 feet; thence S 13° 04' 08" W a distance of 63.7 feet; thence S 53° 56' 40" E a distance of 65.1 feet; thence S 41° 27' 59" E a distance of 110.5 feet; thence S 71° 40' 09" E a distance of 221 feet, more or less, to the South line of that tract of land as recorded on March 21, 1973, Reception No. 73-3991; thence leaving Hardscrabble Creek East along said South line a distance of 744 feet, more or less, to the Southwest corner of that tract of land as recorded on November 25, 1974, Reception No. 74-15761; thence N 09° 00' E along the West line of said tract a distance of 132.0 feet; thence East along the North line of said tract a distance of 330.0 feet to the Westerly right-of-way of County Road No. 65; thence Northeasterly along said Westerly right-of-way a distance of 1123 feet, more or less, to the North line of said D.L.C. No. 44; thence S 89° 45' 35" W along said North line a distance of 1493.8 feet, more or less, to the Point of Beginning, containing 39.6 acres, more or less, all in Douglas County, Oregon.

Subject to an easement for roadway purposes across the South 35.00 feet of the above described parcel.

- Computed Points
  - Set 3/8" I. Rods
  - ⊙ Found Monuments
- BASIS OF BEARING  
IS SURVEY NO. M-29-52

- ↳ Hardscrabble Crk.
- #1 S 46° 32' 05" E 121.0'
  - #2 S 3° 45' 24" N 210.3'
  - #3 S 22° 57' 47" N 81.3'
  - #4 S 65° 02' 44" N 132.5'
  - #5 S 40° 23' 58" N 103.5'
  - #6 S 36° 38' 16" N 224.8'
  - #7 S 42° 52' 45" E 219.4'
  - #8 S 21° 03' 29" E 90.2'
  - #9 S 37° 08' 15" N 57.5'
  - #10 S 13° 04' 08" N 63.7'
  - #11 S 53° 56' 40" E 65.1'
  - #12 S 41° 27' 59" E 110.5'
  - #13 S 71° 40' 09" E 221'

SURVEY FOR  
DON CHURCHILL  
SECTION 1, T22S, R6W, W. M.  
DOUGLAS COUNTY  
Scale 1" = 200' NOV., 1978

NOTE: THIS PARTITION WAS  
APPROVED JULY 10, 1975.

REGISTERED  
PROFESSIONAL  
LAND SURVEYOR  
*Donald R. Stone*  
OREGON  
MARCH 8, 1968  
DONALD R. STONE  
835

MAP FILE N74-53