

COUNTY SURVEYORS FILE BOOK
DO NOT REMOVE FROM OFFICE

Plat of Drain

SECT. 17, T. 22 S., R. 5 W. W. M.

Survey for Road Easement for

Edward T. Alders Drain, Ord. 97435

FILED *d*
RECEIVED *rh*

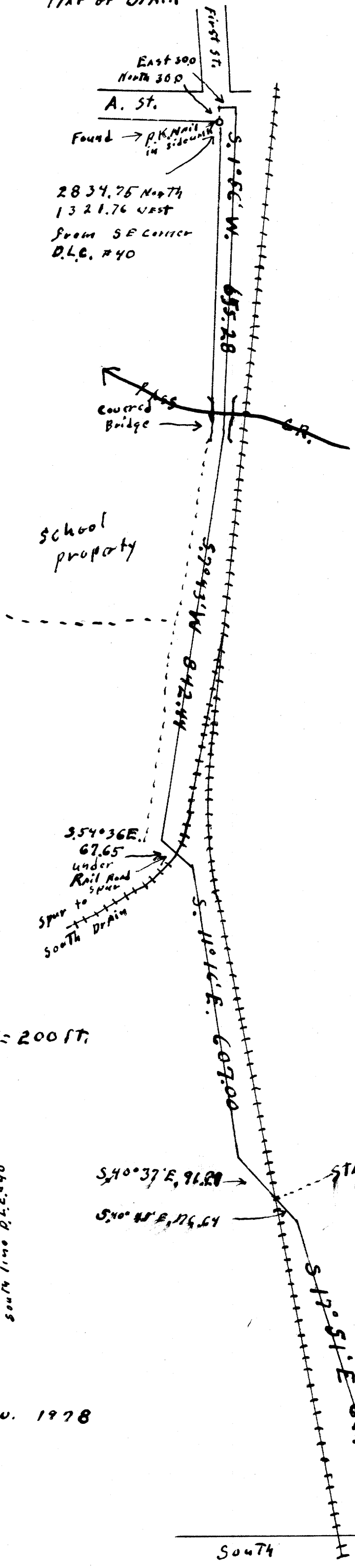
DEC 1 1978

COUNTY SURVEYOR
DOUGLAS COUNTY, ORE.

TB

2834.75 North
1321.76 West
From SE corner
D.L.C. #40

Beginning at a point in the intersection of
First and A streets plat of Drain from which point
The S.E. corner of Warren N. Goodell D.L.C. #40 T. 22 S., R. 5 W.
W. M. bears South 2834.75 and East 1321.76 ft. Thence
East 30.0 feet and S. 1° 56' W. 655.28 feet and S. 7° 43' W.
882.44 feet and S. 54° 36' E. 67.65 and S. 11° 16' E.
607.00 and S. 40° 37' E. 91.29 and S 40° 45' E 76.64 feet
and S. 17° 51' E. 664.61 feet To a point on the
south line of the Warren N. Goodell D.L.C. #40
T. 22 S., R. 5 W. W. M. bears N. 88° 49' E. 940.70 ft.



1" = 200 FT.

North
Based on N 88° 49' E
south line D.L.C. #40

Nov. 1978

REGISTERED
OREGON
LAND SURVEYOR

Wilford N. Haines
MAY 7, 1948
WILFORD N. HAINES
239

Found 2" iron pipe
SE corner D.L.C. #40
Warren N. Goodell
T. 22 S., R. 5 W. W. M.