

COUNTY SURVEYORS FILE DATA
DO NOT REMOVE FROM OFFICE

FILED 7
RECEIVED *es*

OCT 30 1978

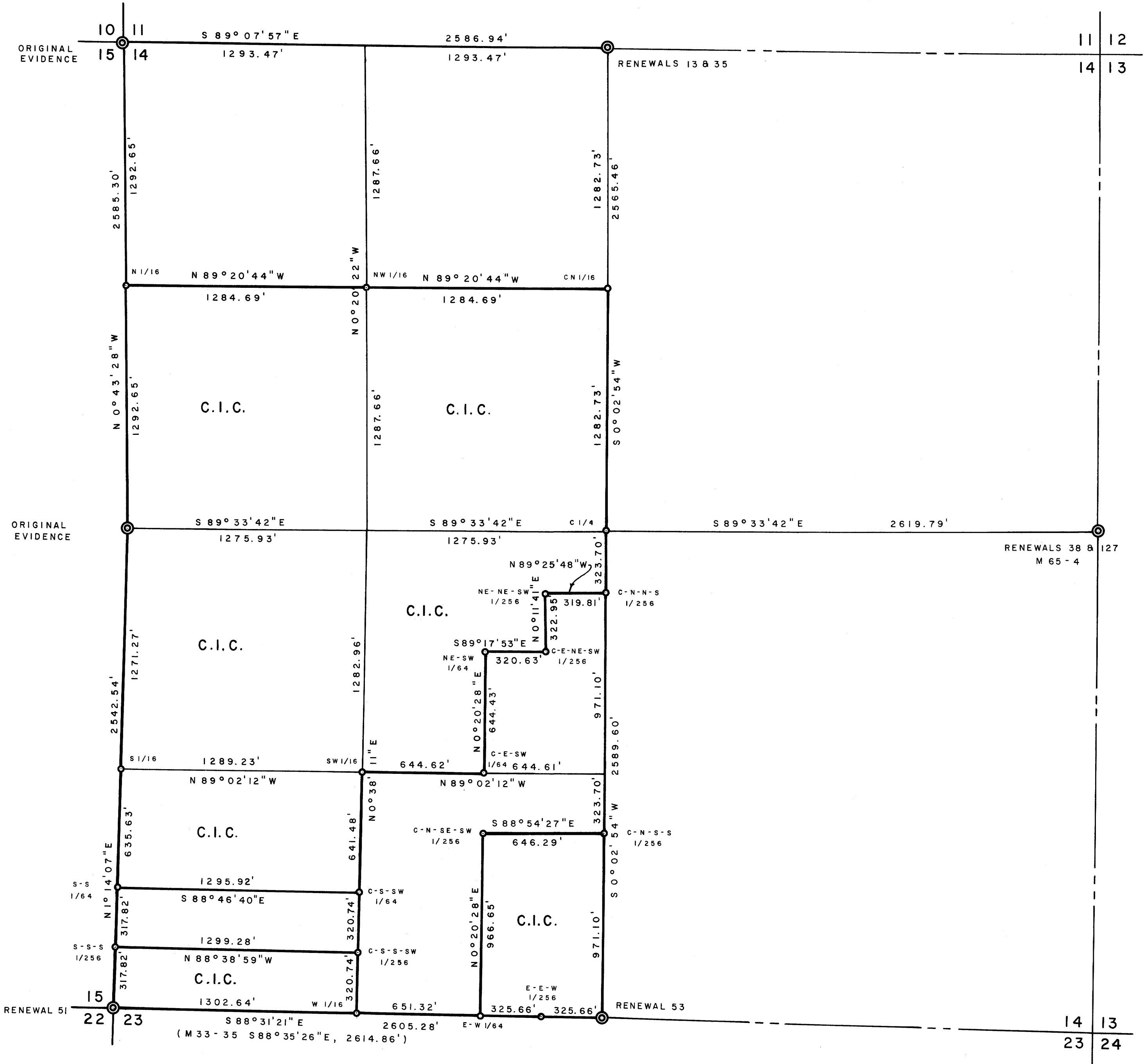
COUNTY SURVEYOR
DOUGLAS COUNTY, ORE.
TH

PROPERTY SURVEY FOR CHAMPION INTERNATIONAL CORP.

SEC. 14, T 22S, R 12W.

SCALE 1" = 400'

OCT. 1978



BASIS FOR BRG., TRUE FROM SOLAR OBS.

REGISTERED
PROFESSIONAL
LAND SURVEYOR

Richard J. Hintz

OREGON
MAY 12, 1960
RICHARD J. HINTZ
497

CORNERS FOUND ⊙

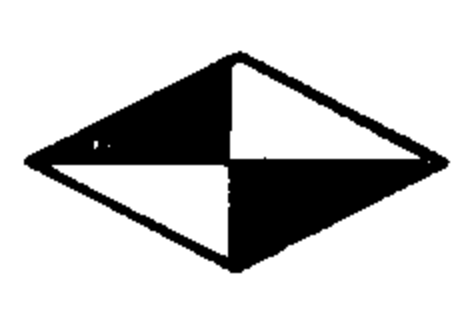
SET 2" I.P.'s W/BR.CAP ○

REFER TO CORNER DESCRIPTION
NOTES SUBMITTED WITH THIS SURVEY.

C.S. File No. C.558/40

M 74-4

October 16, 1978



Richard J. Hintz
Professional Land Surveyor

1890 N. 14th Street • Coos Bay, Oregon • 97420 • (503) 267-3806

Corner Description Notes

Champion International Corporation
Section 14, T 22 S, R 12 W

S-S-S 1/256 Set Stamped 2" IP / Br. Cap from which:
15/14 10" Hemlock brs. S 52° E, 20.2 ft. scribed
 26" Spruce brs. S 24° W, 27.3 ft. scribed

S-S 1/64 Set Stamped 2" IP / Br. Cap from which:
15/14 8" Alder brs. N 46° E, 20.4 ft. scribed
 34" Hemlock brs. S 82° 15' W, 46.8 ft. scribed
 Set steel fence post 1 ft. North of I.P.

✓ S 1/16 Set Stamped 2" IP / Br. Cap from which:
15/14 42" Fir brs. S 68° 30' E, 11.8 ft. scribed
 38" Fir brs. N 12° 30' W, 34.1 ft. scribed

1/4 Cor. Set Stamped 2" IP / Br. Cap from which:
15/14 40" Fir stump brs. N 12° E, 21.1 ft. Orig. B.T.
 48" Spruce brs. S 47° W, 16.5 ft. Orig. B.T.

NEW BEARING TREES

56" Spruce brs. S 7° E, 21.7 ft. scribed
20" Hemlock brs. N 52° W, 27.3 ft. scribed

138

✓ N 1/16

Set Stamped 2" IP / Br. Cap from which:

15/14

6" Hemlock brs. S 57° E, 11.4 ft. scribed

6" Hemlock brs. N 58° 30' W, 7.7 ft. scribed

10/11

Set Stamped 2" IP / Br. Cap from which:

15/14

72" Cedar brs. S 65° E, 99.0 ft. Orig. B.T.

Set 50d nail in new face which brs:

S 65° 30' W, 97.7 ft. scribed

✓ #139

NEW BEARING TREES

38" Maple brs. N24° 30' E, 61.7 ft. scribed

20" Alder brs. S 39° W, 30.1 ft. scribed

28" Maple brs. N 83° W, 89.8 ft. scribed

✓ NW 1/16

Set Stamped 2" IP / Br. Cap from which:

24" Hemlock brs. S 81° E, 38.5 ft. scribed

12" Alder brs. S 9° W, 10.6 ft. scribed

✓ CN 1/16

Set Stamped 2" IP / Br. Cap from which:

30" Cedar brs. S 40° 30' E, 26.3 ft. scribed

6" Hemlock brs. N 62° W, 8.6 ft. scribed

✓ #140

C¼ Sec. 14

Set Stamped 2" IP / Br. Cap from which:

30" Fir brs. S 70° 30' W, 56.5 ft. scribed

C-N-N-S

Set Stamped 2" IP / Br. Cap from which:

1/256

50" Fir brs. S 84° E, 21.0 ft. scribed

36" Fir brs. N 13° 30' W, 37.5 ft. scribed

NE-NE-SW

Set Stamped 2" IP / Br. Cap from which:

1/256

14" Cedar brs. N 34° E, 17.9 ft. scribed

16" Cedar brs. S 25° 30' E, 26.4 ft. scribed

C-E-NE-SW

Set Stamped 2" IP / Br. Cap from which:

1/256

20" Hemlock brs. S52° 30' W, 15.7 ft. scribed

24" Cedar brs. N 65° W, 37.1 ft. scribed

NE-SW

Set Stamped 2" IP / Br. Cap from which:

1/64

24" Hemlock brs. S 26° E, 11.3 ft. scribed

22" Hemlock brs. S 84° W, 9.9 ft. scribed

C-E-SW

Set Stamped 2" IP / Br. Cap from which:

1/64

18" Maple Brs. S 70° 30' E, 77.9 ft. scribed

26" Fir brs. N 37° W, 52.0 ft. scribed

✓ SW 1/16

Set Stamped 2" IP / Br. Cap from which:

16" Cedar brs. N 14° E, 22.1 ft. scribed

26" Cedar brs. S 42° E, 49.1 ft. scribed

C-S-SW

Set Stamped 2" IP / Br. Cap from which:

1/64

6" Alder Brs. S 5° W, 3.5 ft. scribed

10" Alder brs. N 36° W, 10.4 ft. scribed

C-S-S-SW

Set Stamped 2" IP / Br. Cap from which:

1/256

20" Hemlock brs. S 40° E, 8.6 ft. scribed

18" Cedar brs. S 54° 30' W, 11.0 ft. scribed

✓ W 1/16

Set Stamped 2" IP / Br. Cap from which:

14

38" Cedar brs. S 3° W, 17.6 ft. scribed

23

14" Alder brs. N 21° W, 25.6 ft. scribed

E-W 1/64 Set Stamped 2" IP / Br. Cap from which:
14 24" Cedar brs. N 11° 30' E, 33.8 ft. scribed
 23 26" Cedar brs. N 62° 30' W, 44.0 ft. scribed

E-E-W 1/256 Set Stamped 2" IP / Br. Cap from which:
14 18" Alder brs. S 71° E, 10.2 ft. scribed
 23 12" Hemlock brs. S 24° W, 34.1 ft. scribed

C-N-SE-SW Set Stamped 2" IP / Br. Cap from which:
 1/256 20" Alder brs. N 34° 30' E, 54.0 ft. scribed
 42" Hemlock brs. S 16° E, 28.9 ft. scribed

C-N-S-S Set Stamped 2" IP / Br. Cap from which:
 1/256 18" Myrtle brs. S 17° E, 10.7 ft. scribed
 36" Maple brs. S 61° W, 21.8 ft. scribed

NOTE: All distances are taken to a 50d nail
 driven in the side of each B.T. at its
 approximate center, unless noted.
 A Champion International Corp. location
 poster was attached to each B.T.

Richard J. Hintz, PLS # 497
 October 16, 1978