

# SURVEY TO SET SECTION CORNER

COUNTY SURVEYORS FILE DATA  
DO NOT REMOVE FROM OFFICE

SECTIONS 7, 8, 17 & 18, T.27S. R.3W. W.M.

FOR: TOM LINDBLOOM  
BY: BAUGHMAN TECHNICAL SERVICES INC.

FILED  
RECEIVED

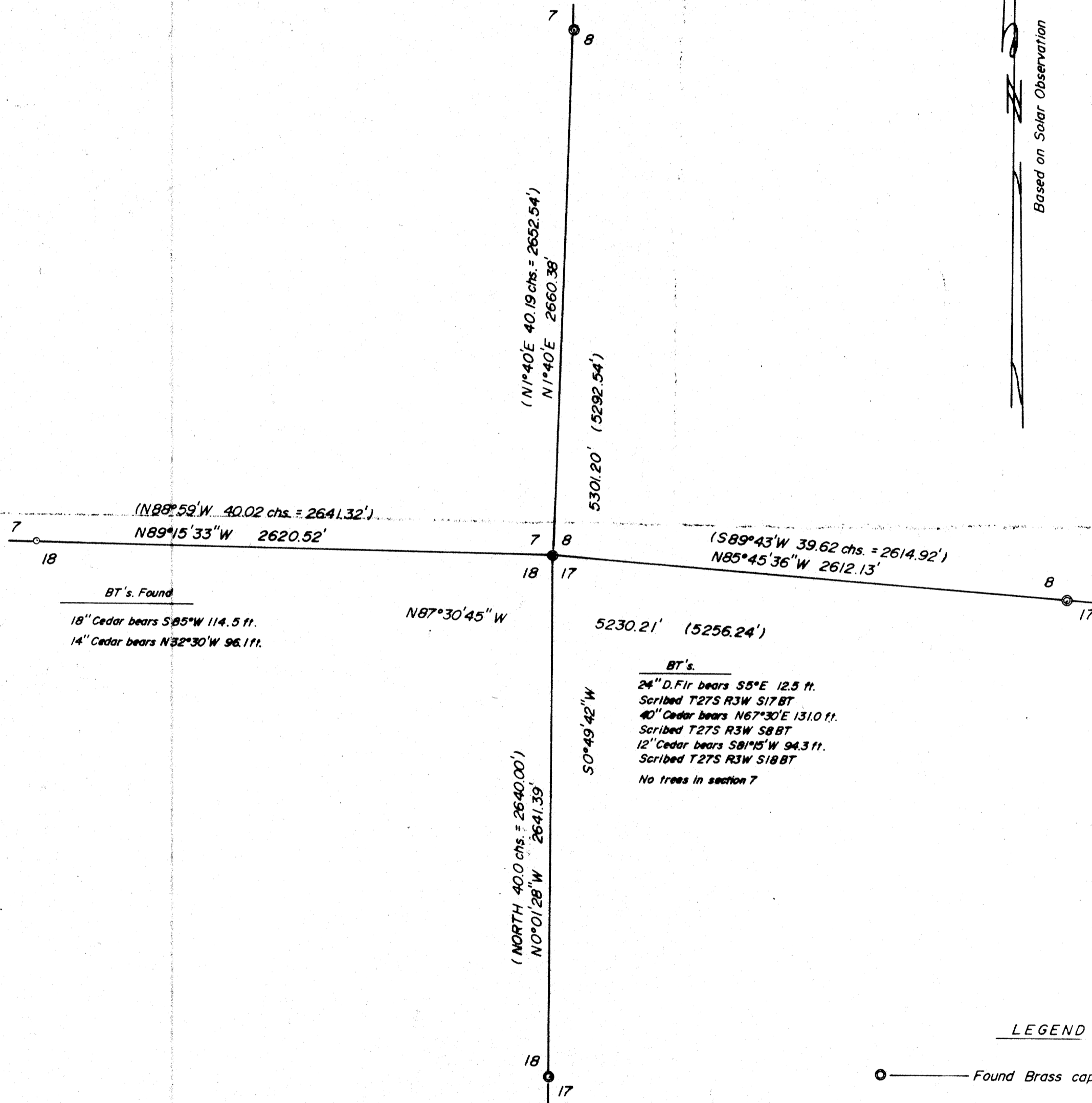
NOV 20 1978

COUNTY SURVEYOR  
DOUGLAS COUNTY, ORE.

SEPTEMBER 1978 — SCALE: 1" = 500'

REGISTERED  
PROFESSIONAL  
SURVEYOR  
*Alan K. Baughman*  
BAUGHMAN  
35

Based on Solar Observation



LEGEND

- — Found Brass cap
- — Set Brass cap
- — Corner not found — found two BT's.

SEE ALSO M 73-56

FM 6-61