

SURVEY FOR DESCRIPTION

IN SECTIONS 27 & 34 T.26S.R.3W.W.M.

FOR: GEORGE KELLER

BY: BAUGHMAN TECHNICAL SERVICES INC.

NOVEMBER 1978

SCALE: 1"=200'

COUNTY SURVEYORS FILE DATA
DO NOT REMOVE FROM OFFICE

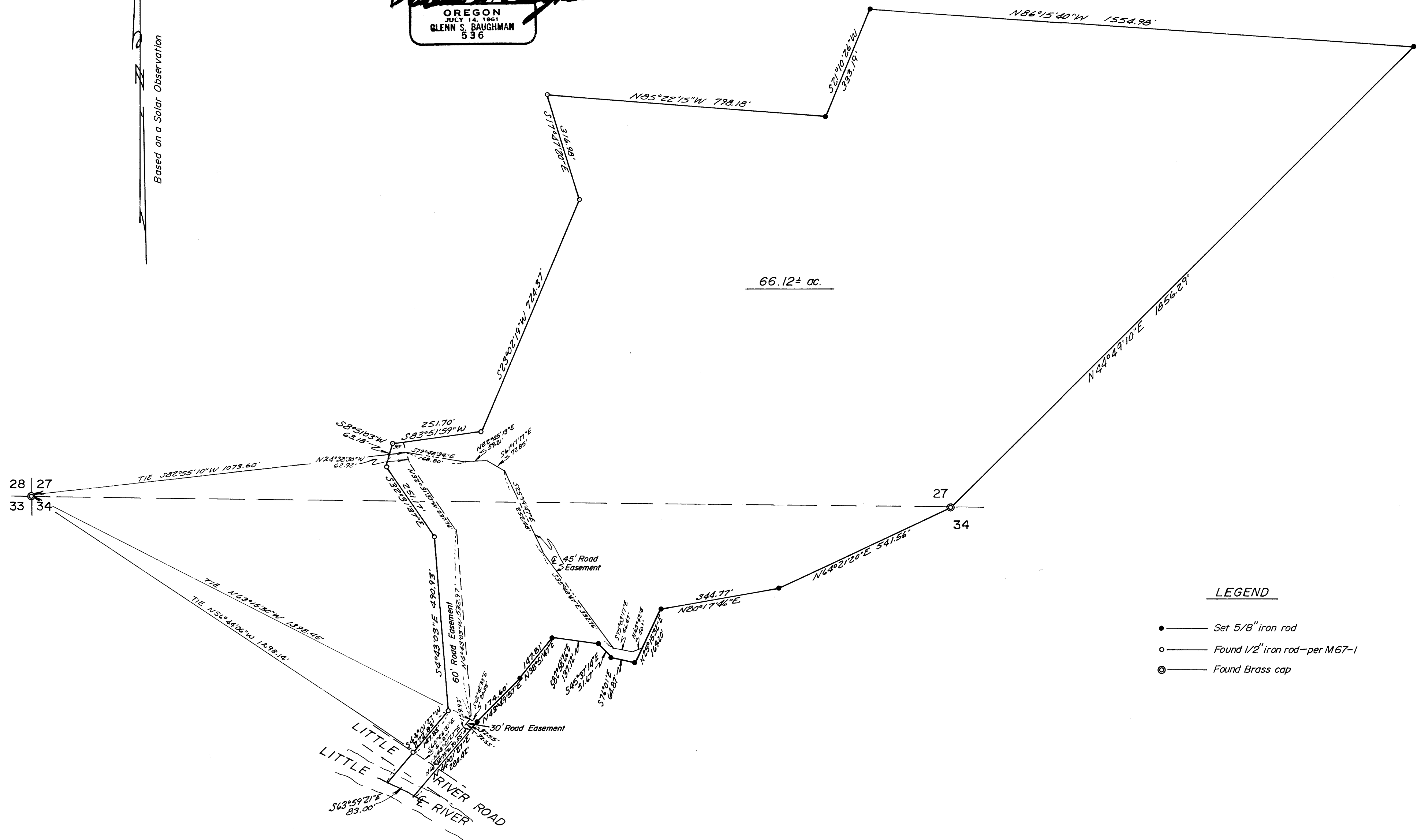
FILED
RECEIVED
NOV 17 1978
COUNTY SURVEYOR
CLATSOP COUNTY, ORE
78

REGISTERED
PROFESSIONAL
LAND SURVEYOR

Glenn S. Baughman

OREGON
JULY 14, 1961
GLENN S. BAUGHMAN
536

Based on a Solar Observation



LEGEND

- — Set 5/8" iron rod
- — Found 1/2" iron rod—per M67-1
- ⊙ — Found Brass cap

MAP FILE M74-25

MAP FILE M74-25