

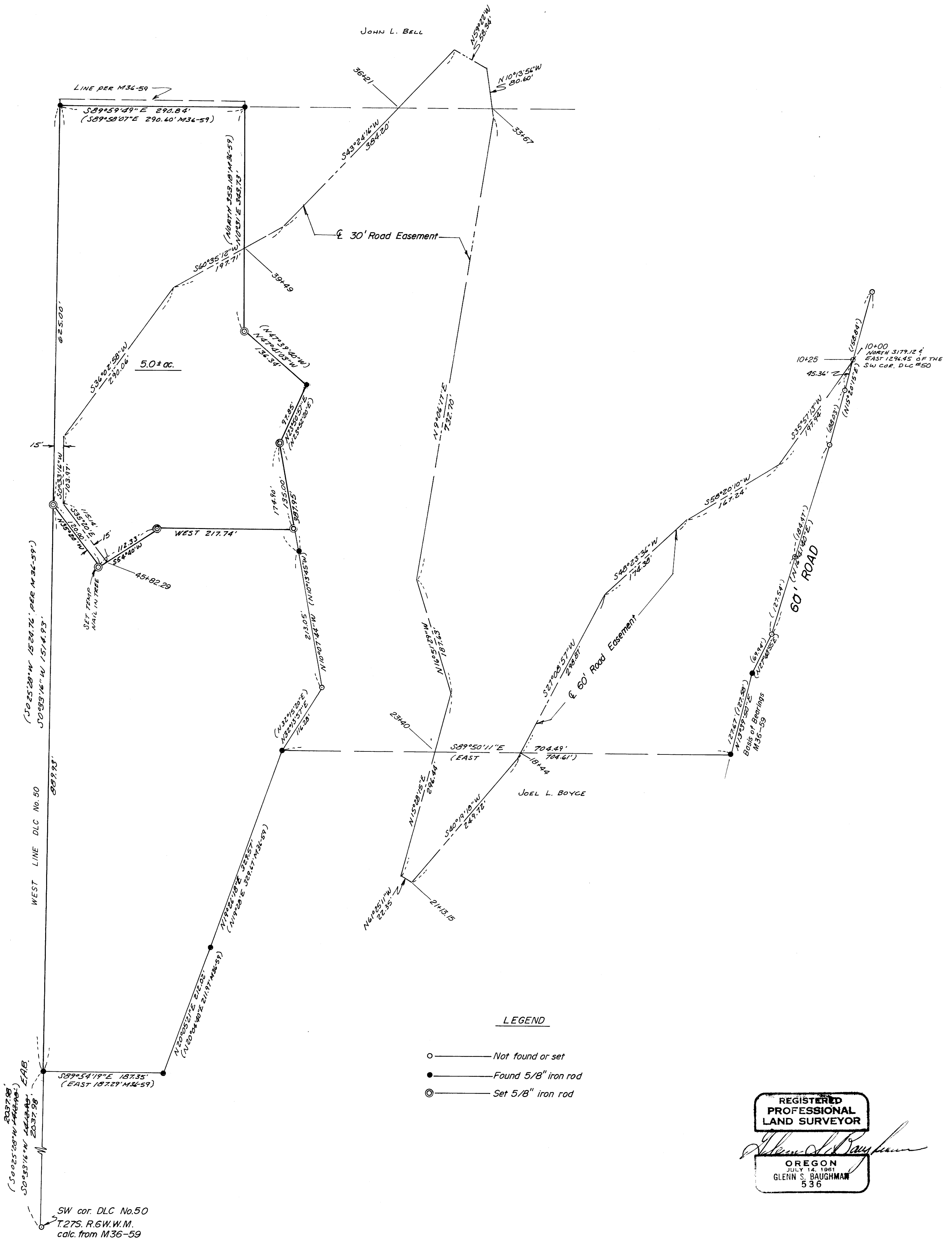
COUNTY SURVEYORS FILE DATA
DO NOT REMOVE FROM OFFICE

SURVEY FOR GEORGE GIBBY IN SECTIONS 9 & 16 T.27S.R.6W.W.M.

BY: BAUGHMAN TECHNICAL SERVICES INC.

NOVEMBER 1978 — SCALE: 1"=100'

FILED
RECEIVED
COUNTY SURVEYOR
COLUMBIA COUNTY, ORE.
TB



LEGEND

- — Not found or set
- — Found 5/8" iron rod
- ⊙ — Set 5/8" iron rod

REGISTERED
PROFESSIONAL
LAND SURVEYOR

Glenn S. Baughman

OREGON
JULY 14, 1961
GLENN S. BAUGHMAN
536

SW cor. DLC No. 50
T.27S. R.6W. W.M.
calc. from M36-59