

Book 4 Page 27A

# MINOR LAND PARTITION

IN SEC. 1, T29S, R6W, W.M., DOUGLAS CO. OREGON  
 AUGUST 1978 SCALE: 1" = 100'

REGISTERED  
 PROFESSIONAL  
 LAND SURVEYOR

*Gene A. Miller*  
 OREGON  
 JULY 14, 1976  
 GENE A. MILLER  
 1647

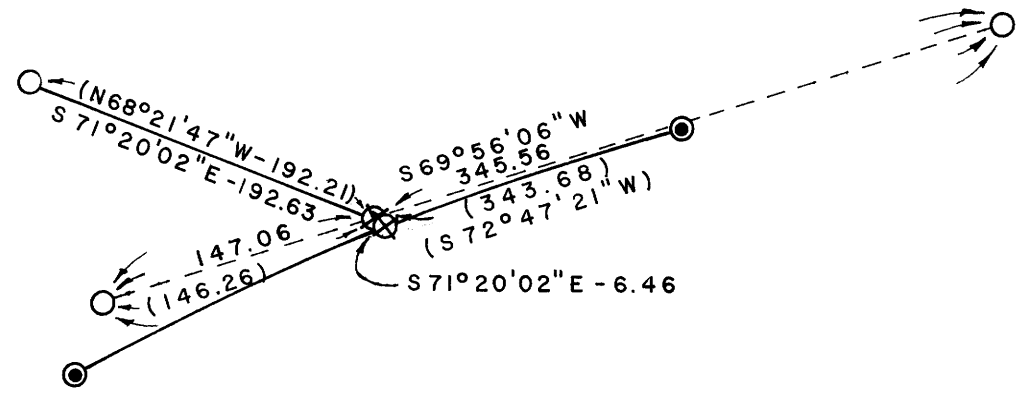
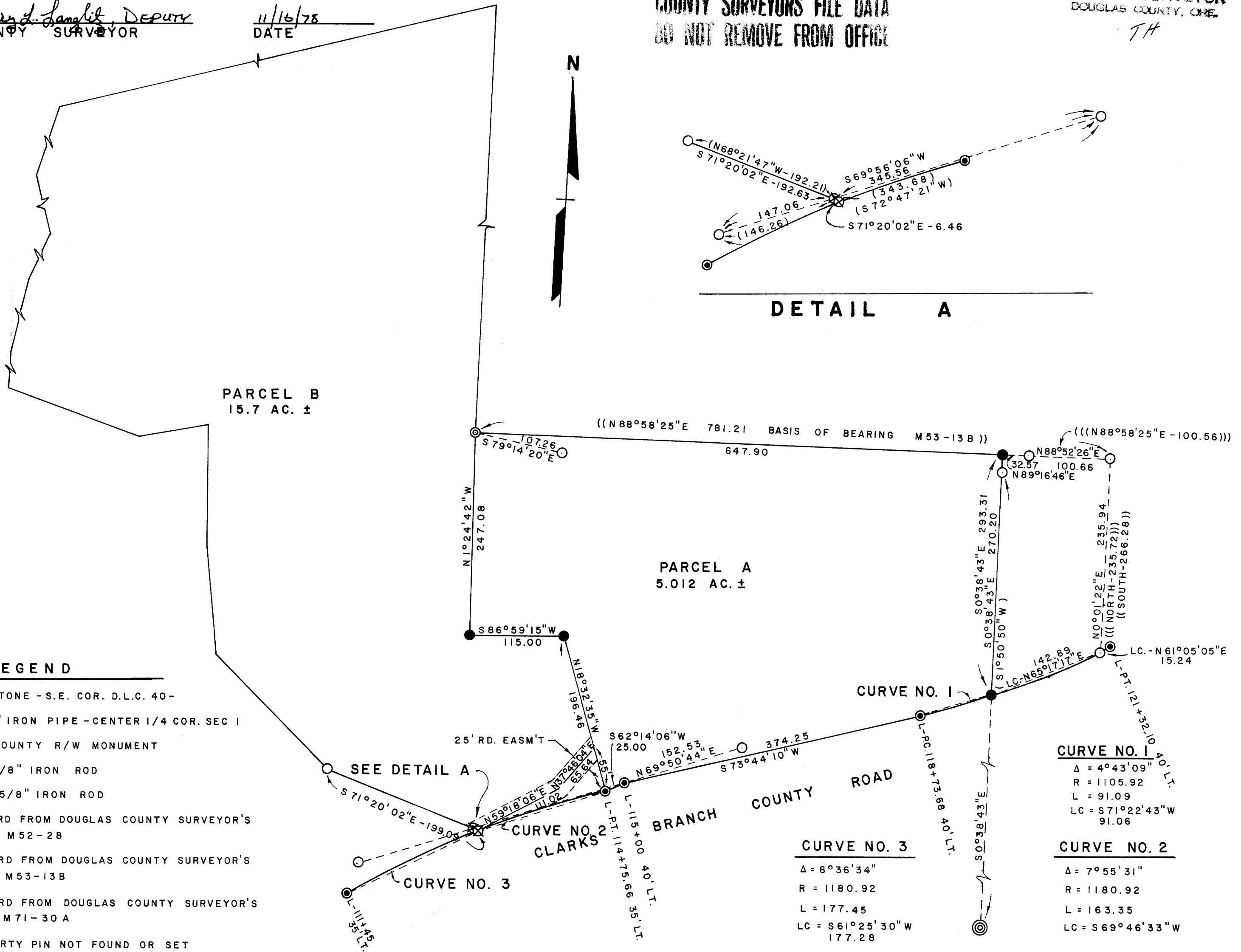
FILED  
 RECEIVED

NOV 16 1978

COUNTY SURVEYOR  
 DOUGLAS COUNTY, ORE.

APPROVALS:  
*Keith L. Cubie* 11/13/78  
 PLANNING COMMISSION DATE  
*Harry J. Langlit* 11/16/78  
 COUNTY SURVEYOR DEPUTY DATE

COUNTY SURVEYORS FILE DATA  
 DO NOT REMOVE FROM OFFICE



MAP M74-21A

M74-21A