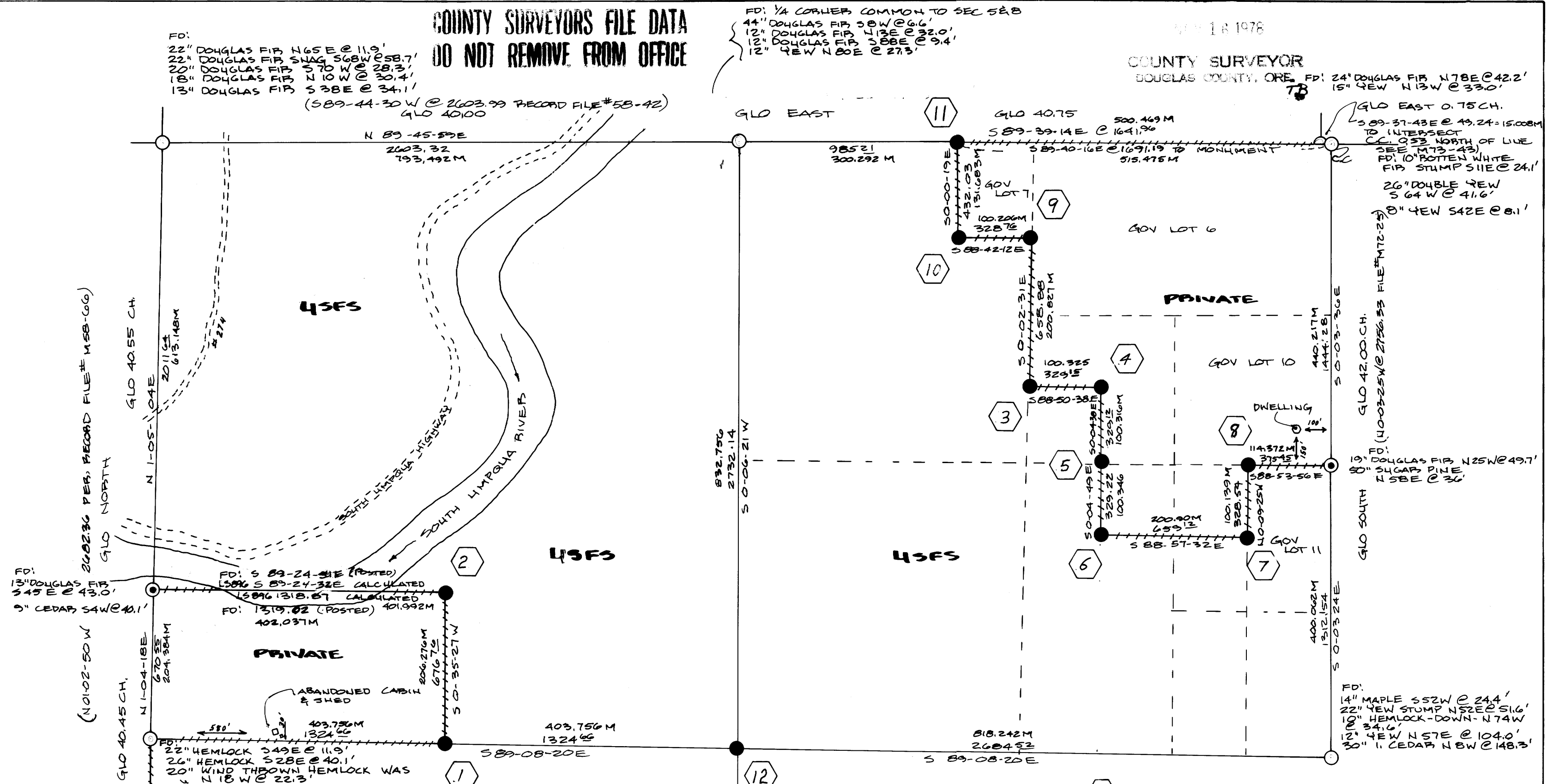


SEP 18 1978

COUNTY SURVEYOR
DOUGLAS COUNTY, ORE. FD: 24" DOUGLAS FIR N78E @ 42.2'
15" YEW N13W @ 33.0'

COUNTY SURVEYORS FILE DATA
DO NOT REMOVE FROM OFFICE

- ① 10" DOUGLAS FIR S 87E @ 11.75' SCRIBED
C W 1/16 SB UPPER BLAZE
8" B. CEDAR S46W @ 11.20' SCRIBED
C W 1/16 SB UPPER BLAZE
- ② 11" B. CEDAR S71E @ 10.65' SCRIBED
C S NW 1/64 SB UPPER BLAZE
16" B. CEDAR N45E @ 27.20' SCRIBED
C S NW 1/64 SB UPPER BLAZE
- ③ 30" DOUGLAS FIR N48W @ 28.4' SCRIBED
C S N NE 1/256 SB UPPER BLAZE
30" S. PINE S 51 1/2 W @ 48.65' SCRIBED
C S N NE 1/256 SB UPPER BLAZE
- ④ 14" S. PINE S64W @ 19.60' SCRIBED
S W NE NE 1/256 SB UPPER BLAZE
18" DOUGLAS FIR S31W @ 4.0' SCRIBED
S W NE NE 1/256 SB UPPER BLAZE
- ⑤ 7" S. PINE N46W @ 11.05' SCRIBED
C W E NE 1/256 SB UPPER BLAZE
27" I. CEDAR S66 1/2 W @ 23.55' SCRIBED
C W E NE 1/256 SB UPPER BLAZE
- ⑥ 25" I. CEDAR N77W @ 34.55' SCRIBED
N W SE NE 1/256 SB UPPER BLAZE
30" I. CEDAR S46W @ 45.60' SCRIBED
N W SE NE 1/256 SB UPPER BLAZE
- ⑦ 10" YEW N72E @ 7.8' SCRIBED NE SE NE 1/256
SB UPPER BLAZE
13" YEW S39E @ 31.10' SCRIBED
NE SE NE 1/256 SB UPPER BLAZE



FD: 13" DOUGLAS FIR S45E @ 43.0'
9" CEDAR S46W @ 40.1'

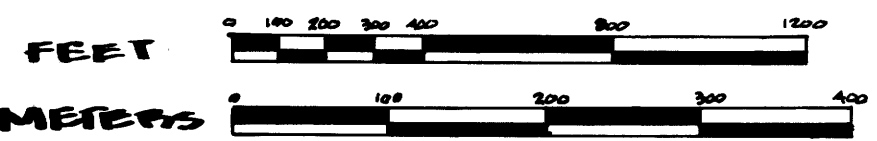
FD: 13" DOUGLAS FIR S89-24-31E (POSTED) 1596 S 89-24-31E CALCULATED 5896.1318.67
FD: 1519.82 (POSTED) 401.992M

FD: 17" I. CEDAR S32E @ 47.1'
21" SUGAR PINE N76W @ 57.0'

BASIS OF BEARING - SOLAR OBSERVATION

1" = 400'

BAR SCALE



LEGEND

- 2 1/2 INCH BRASS CAP ON A 1 INCH GALVANIZED STEEL PIPE SET BY DOUGLAS COUNTY SURVEYORS
- 3" Brass Cap Set By 151068 or 961
- SET 3" INCH BRASS CAP BIVITED TO A 2 INCH X 30 INCH GALVANIZED STEEL PIPE
- ALL BEARING TREES MARKED DURING THIS SURVEY HAVE A 1 INCH BRASS DISK STAMPED LS 896 NAILED WITH A STEEL FINISHING NAIL TO THE LOWER BLAZE WHICH IS ALSO SCRIBED "BT".
- LINE POSTED WITH STEEL FENCE POSTS & GOVERNMENT PROPERTY SIGNS.
- 219.92 M DISTANCE IN METERS
- FD: FOUND

I, LARRY D. BISHOP A REGISTERED LAND SURVEYOR IN THE STATE OF OREGON, HEREBY CERTIFY THAT THIS PLAT AND THE NOTES HEREON ARE A CORRECT REPRESENTATION OF A SURVEY I PERFORMED DURING AUGUST-SEPTEMBER 1978 FOR THE U.S. FOREST SERVICE IN ACCORDANCE WITH THE STATUTE OF THE STATE OF OREGON & THE ARTICLES OF MY CONTRACT

Larry D. Bishop
LARRY D. BISHOP
REGISTERED LAND SURVEYOR, NO 896

REGISTERED PROFESSIONAL LAND SURVEYOR

Larry D. Bishop

OREGON
JULY 11, 1969
LARRY D. BISHOP
896

PLAT OF SURVEY
USDA FOREST SERVICE, REGION 6
UMPQUA NATIONAL FOREST
TILLER, NO. 29 CADASTRAL
CONTRACT NO 5304HT-8-6963N

LOCATION: SECTION 8, T30S, R1W, WM DOUGLAS COUNTY, OR.

- ⑧ 17" DOUGLAS FIR S79W @ 17.0' SCRIBED
C E E NE 1/256 SB UPPER BLAZE
8" DOUGLAS FIR S21E @ 16.25' SCRIBED
C E E NE 1/256 SB UPPER BLAZE
- ⑨ 12" YEW S76W @ 16.55' SCRIBED
C N N NE 1/256 SB UPPER BLAZE
10" WHITE FIR S19W @ 20.80' SCRIBED
C N N NE 1/256 SB UPPER BLAZE
- ⑩ 34" I. CEDAR N12W @ 53.15' SCRIBED
NE NW NE 1/256 SB UPPER BLAZE
13" SUGAR PINE S37W @ 21.95' SCRIBED
NE NW NE 1/256 SB UPPER BLAZE
- ⑪ 27" DOUGLAS FIR S12 1/2 W @ 40.25' SCRIBED
E W E 1/256 SB UPPER BLAZE
10" CHINGQUAPIN S62 1/2 W @ 20.75' SCRIBED
E W E 1/256 SB UPPER BLAZE
- ⑫ 14" YEW N74E @ 17.75' SCRIBED
C 1/4 SB UPPER BLAZE
12" I. CEDAR N83W @ 31.60' SCRIBED
C 1/4 SB UPPER BLAZE

BISHOP SURVEYING
PO BOX 729, HOOD RIVER, OR.
PH (503) 386-5122
SEP 27, 1978
PROJECT: 788054