

COUNTY SURVEYORS FILE DATA
DO NOT REMOVE FROM OFFICE

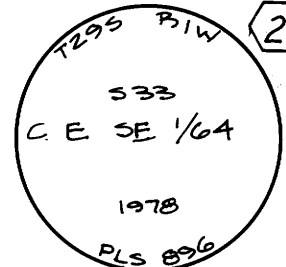
FILED
RECEIVED

NOV 14 1978

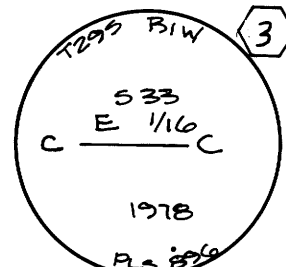
COUNTY SURVEYOR
DOUGLAS COUNTY, ORE



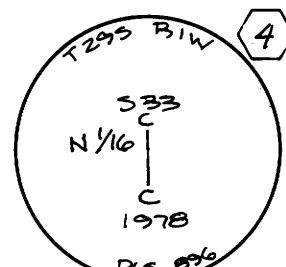
18" WHITE FIR S70W @ 8.25' SQUARE BLAZE WITH 'X' SCRIBED CHEST HIGH. UPPER BLAZE.
8" WHITE FIR N30E @ 14.0' SQUARE BLAZE WITH 'X' SCRIBED CHEST HIGH. UPPER BLAZE.



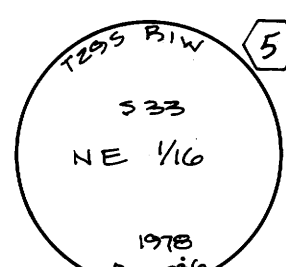
13" DOUGLAS FIR S87E @ 10.10' SCRIBED CE SE 1/64 S 33' UPPER BLAZE.
10" MADRONE N44W @ 14.75' SCRIBED C-E SE 1/64 S 33' UPPER BLAZE.



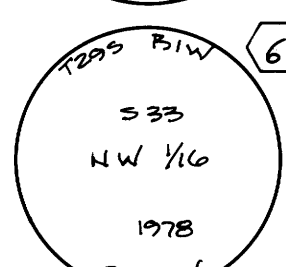
6" OAK S87E @ 24.05' SCRIBED CE 1/16 S33 UPPER BLAZE.
18" PONDEROSA PINE S43E @ 30.40' SCRIBED CE 1/16 S 33' UPPER BLAZE.



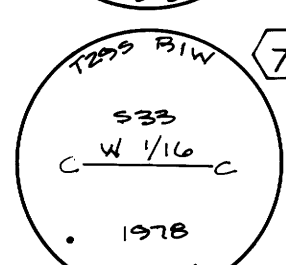
6" DOUGLAS FIR N85E @ 18.75' SCRIBED CN 1/16 S33 UPPER BLAZE.
14" SUGAR PINE N20W @ 53.0' SCRIBED CN 1/16 S33 UPPER BLAZE.



13" I. CEDAR N76E @ 30.25' SCRIBED NE 1/16 S33 UPPER BLAZE.
16" DOUGLAS FIR N10W @ 19.65' SCRIBED NE 1/16 S33 UPPER BLAZE.



11" DOUGLAS FIR S35 1/2 W @ 25.85' SCRIBED NW 1/16 S33 UPPER BLAZE.
10" DOUGLAS FIR N 11 1/2 W @ 30.20' SCRIBED NW 1/16 S33 UPPER BLAZE.



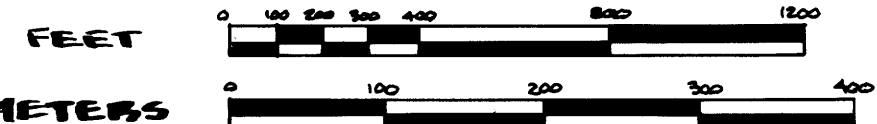
12" DOUGLAS FIR N82W @ 10.75' SCRIBED CW 1/16 S33 UPPER BLAZE.
12" DOUGLAS FIR N 16 W @ 30.75' SCRIBED CW 1/16 S33 UPPER BLAZE.



BASIS OF BEARING - SOLAR OBSERVATION

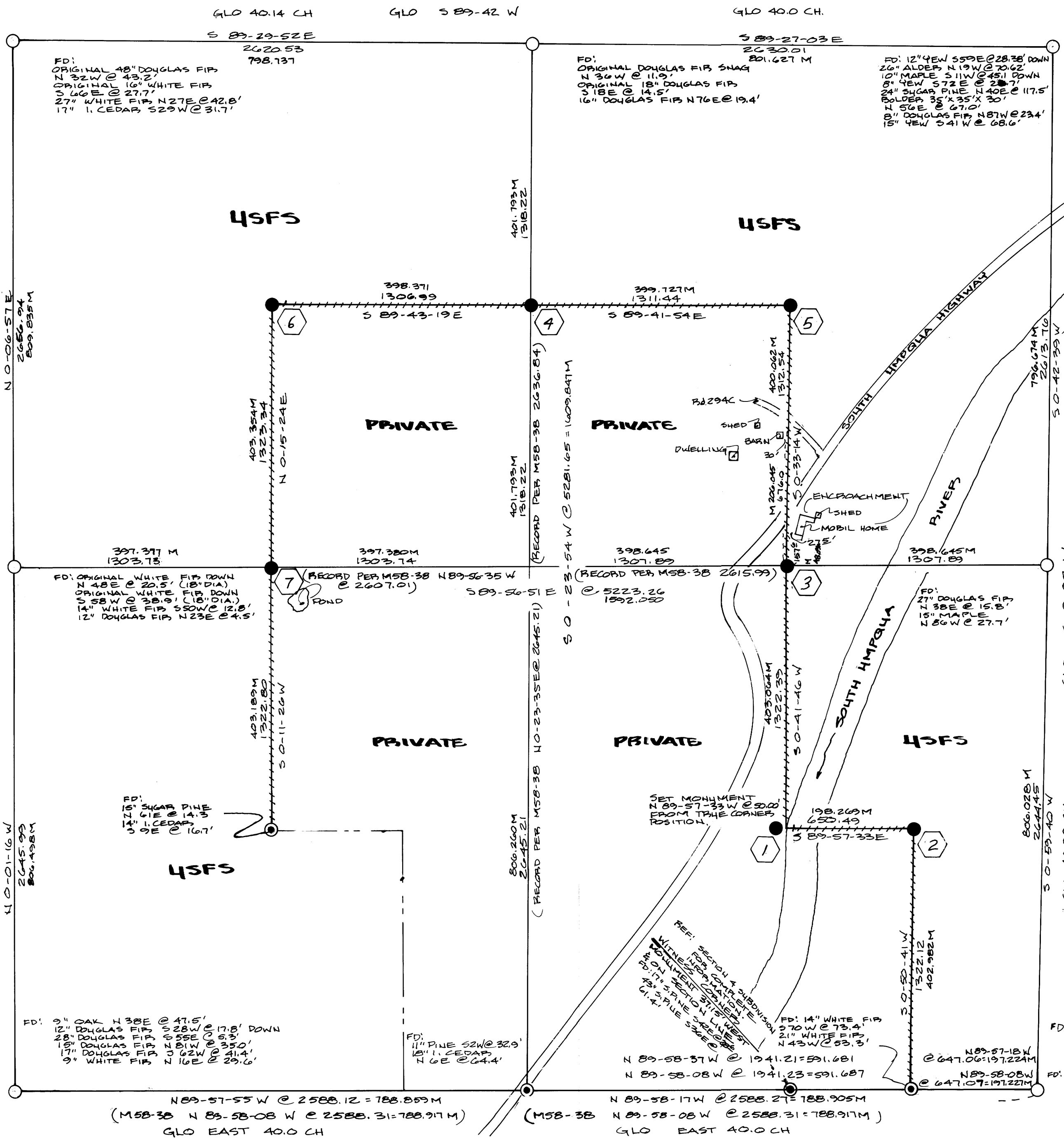
1" = 400'

BAR SCALE



LEGEND

- 2 1/2 INCH BRASS CAP ON A 1 INCH GALVANIZED STEEL PIPE SET BY DOUGLAS COUNTY SURVEYOR
 - ⊙ 3 INCH BRASS CAP ON A 2" X 30" GALVANIZED STEEL PIPE SET BY LS 483
 - SET 3 INCH BRASS CAP PIVOTED TO A 2 INCH X 30 INCH GALVANIZED STEEL PIPE
- ALL BEARING TREES MARKED DURING THIS SURVEY HAVE A ONE INCH BRASS DISK STAMPED LS 896 NAILED WITH A STEEL FINISHING NAIL TO THE LOWER BLAZE WHICH IS ALSO SCRIBED "BT" THE
- LINE POSTED WITH STEEL FENCE POSTS & GOVERNMENT PROPERTY SIGNS.
- 219.312 M DISTANCE IN METERS
FD: FOUND



REGISTERED PROFESSIONAL
LA D SURVEYOR

Larry D. Bishop

OREGON
JUL 11, 1968
LARRY D. BISHOP
896

OCT 19, 1978

PLAT OF SURVEY
USDA, FOREST SERVICE, REGION 6
UMPQUA NATIONAL FOREST
TILLER NO 29 CADASTRAL
CONTRACT NO 53-0411-8-6963N

I, LARRY D. BISHOP A REGISTERED LAND SURVEYOR IN THE STATE OF OREGON HEREBY CERTIFY THAT THIS PLAT AND THE NOTES HEREON ARE A CORRECT REPRESENTATION OF A SURVEY I PERFORMED DURING SEPTEMBER - OCTOBER, 1978, FOR THE U.S. FOREST SERVICE IN ACCORDANCE WITH THE STATUTES OF THE STATE OF OREGON & THE ARTICLES OF MY CONTRACT.

Larry D. Bishop
REGISTERED LAND SURVEYOR NO 896

BISHOP SURVEYING
PO BOX 129, HOOD RIVER, OR.
PH (503) 386-5122
OCT 1978
PROJECT: 188054

LOCATION: SECTION 33, T29S, R1W WM. DOUGLAS COUNTY, OR.

MAP FILE M74-17