

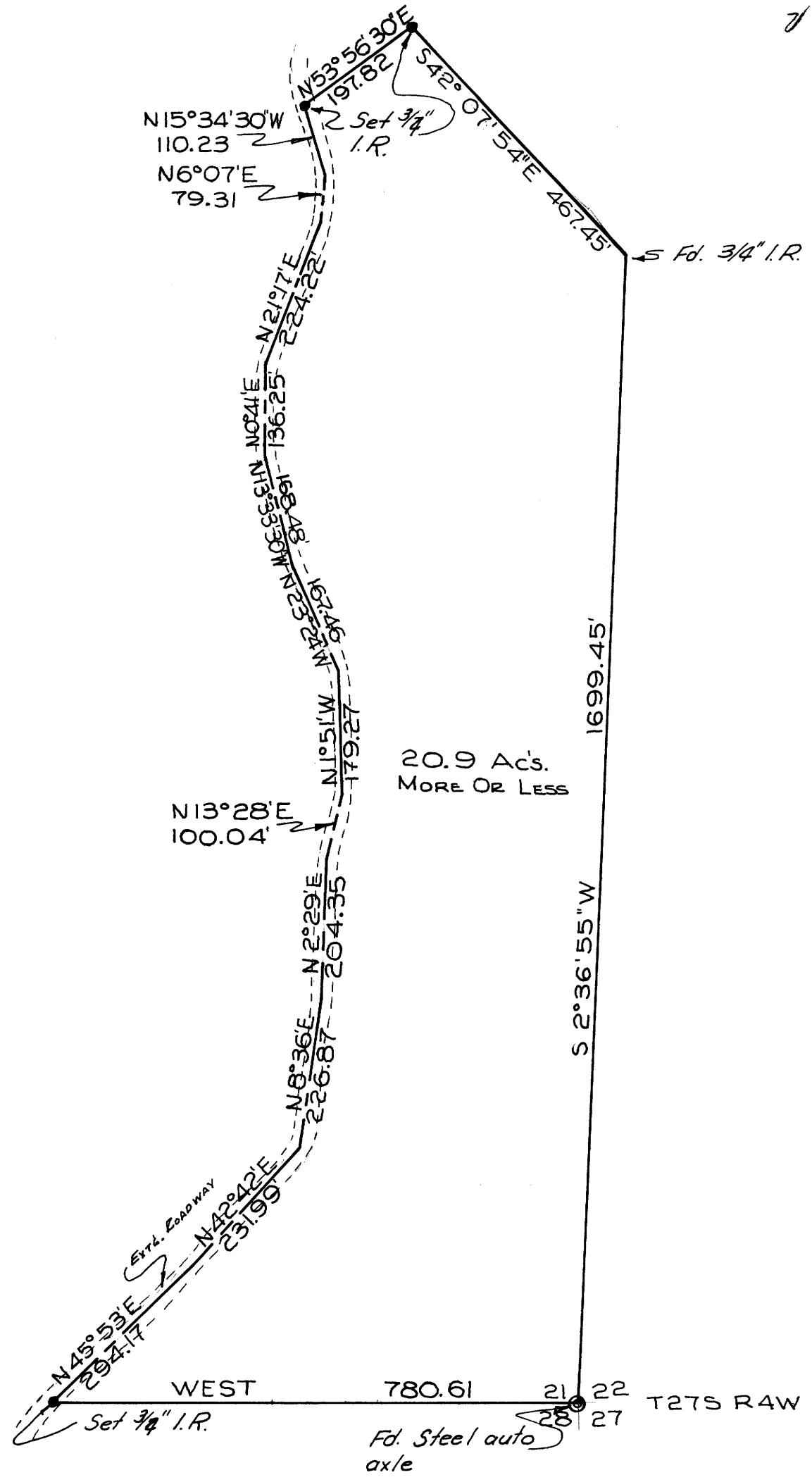
# A SURVEY IN SECS. 21 & 22 T27S R4W WM

BY BRUCE ROGERS FOR EMMET GIBBONS

Sept. 1978

COUNTY SURVEYORS FILE DATA  
DO NOT REMOVE FROM OFFICE

FILED ✓  
RECORDED ✓  
COUNTY SURVEYOR  
CLATSOP COUNTY, ORE.  
✓



SCALE 1" = 200'  
BENCH ARE MAGNETIC.  
(COMPASSES - ROTATED FROM)  
MAGNETIC

REGISTERED  
OREGON  
LAND SURVEYOR

*Bruce R. Rogers*

JULY 10, 1964  
BRUCE R. ROGERS  
660