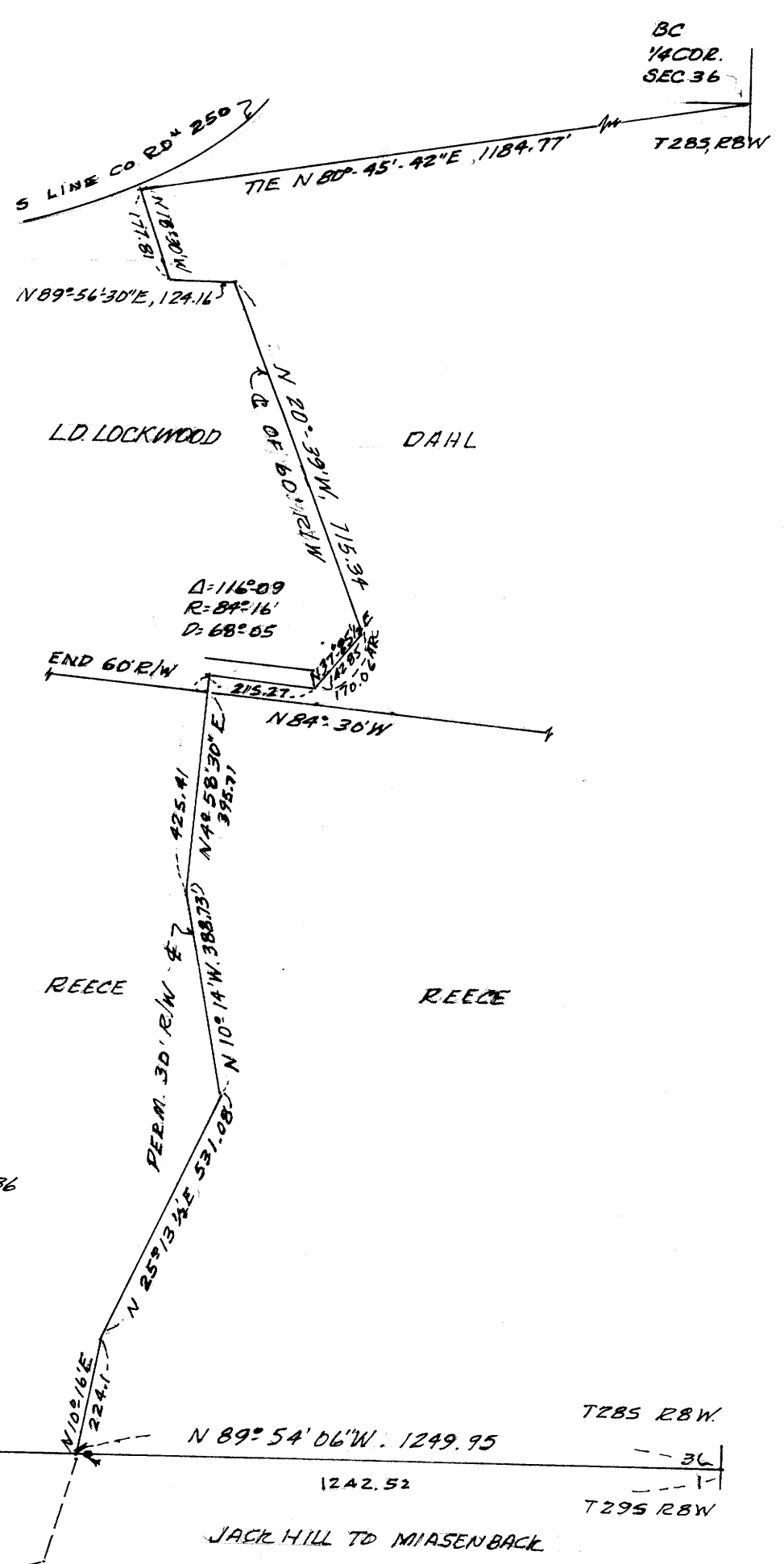


FILED *U JK*
RECEIVED

OCT 27 1978

COUNTY SURVEYOR
WILLAS COUNTY, ORE.

7

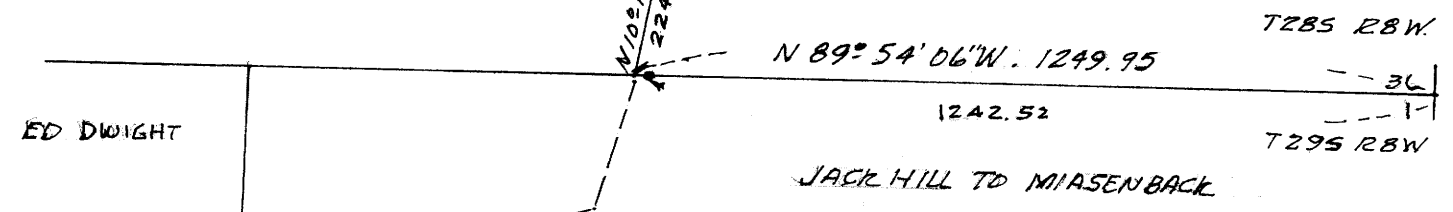


REGISTERED
PROFESSIONAL
LAND SURVEYOR

Herbert L. Northcraft

OREGON
JULY 8, 1966
HERBERT L. NORTHCRAFT
750

BASE SURVEYS IN SEC 36
T28S R8W W.M.
SEE M 71-8



**ROAD EASEMENTS TO ED DWIGHT &
JACK HILL PROP. IN SEC. 1 T29S, R8W,
W.M. DOUBLAS CO. OREGON
SCALE 1"=300' OCT 1977-1978**

COUNTY SURVEYORS FILE DATA
DO NOT REMOVE FROM OFFICE