

COUNTY SURVEYORS FILE DATA
DO NOT REMOVE FROM OFFICE

SURVEY IN SECTION 32, T.25 S., R. 6 W., W. M.
SURVEYED FOR LESTER RICHARDSON

SURVEYED BY R. H. GEE

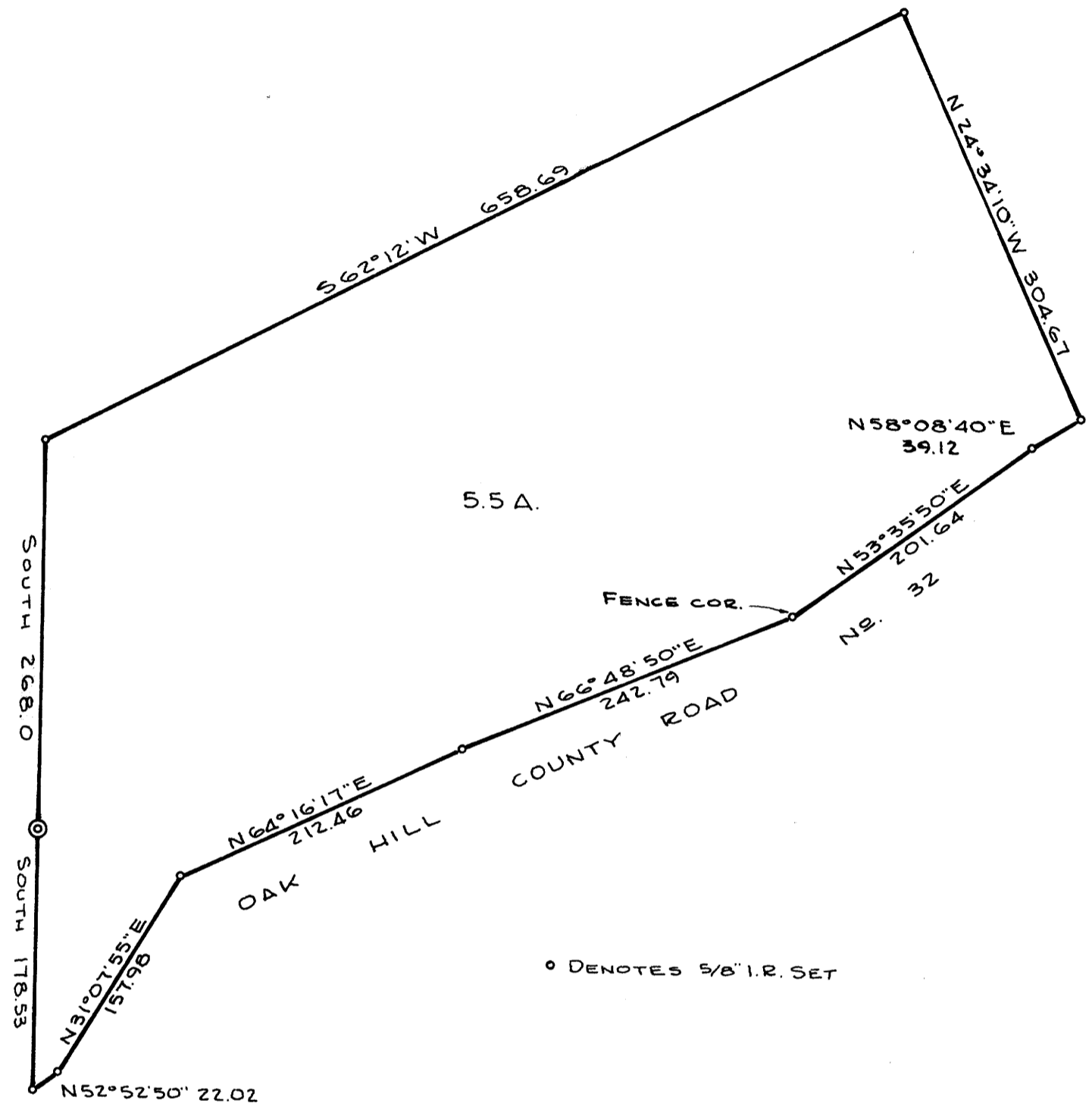
OCTOBER, 1978

SCALE 1" = 100'

FILED *d*
RECEIVED *DK*

OCT 27 1978

COUNTY SURVEYOR
DOUGLAS COUNTY, ORE.
TB



BEARINGS BASED ON C.S. 55-93
1"x2" I.BAR
S.W. COR. D.L.C. NO 54
T.25S, R.6W, W.M.

o DENOTES 5/8" I.R. SET

REGISTERED
PROFESSIONAL
LAND SURVEYOR

R. H. Gee

OREGON
SEPTEMBER 21 1977
R. H. GEE
1191