

COUNTY SURVEYORS FILE DATA
DO NOT REMOVE FROM OFFICE

SURVEY FOR DEED DESCRIPTION IN SEC. 7, T 29 S, R 7 W. W. M.

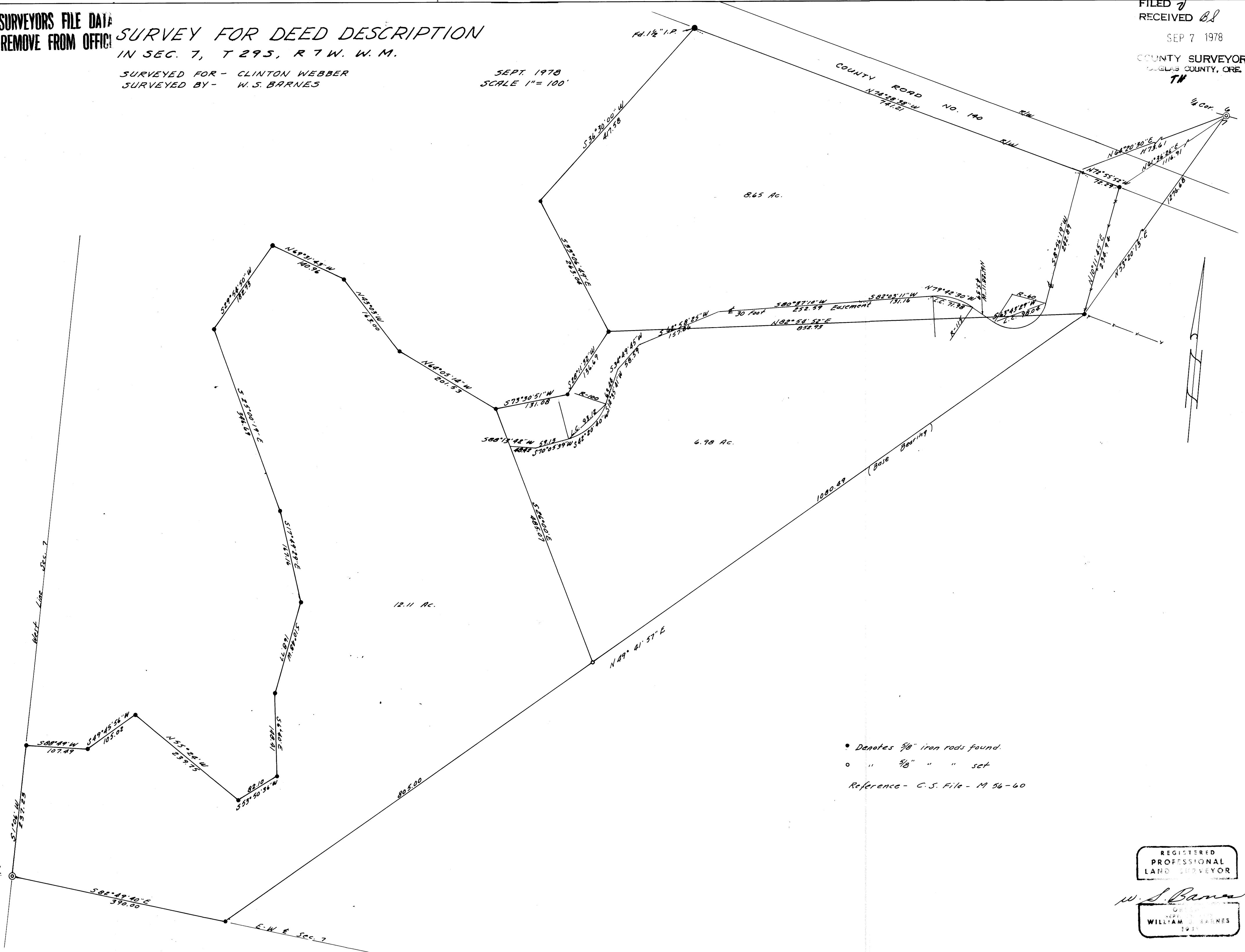
SURVEYED FOR - CLINTON WEBBER
SURVEYED BY - W. S. BARNES

SEPT. 1978
SCALE 1" = 100'

FILED 7
RECEIVED 08

SEP 7 1978

COUNTY SURVEYOR
CLATSOP COUNTY, ORE.
TH



• Denotes 3/8" iron rods found.
 ○ " 3/8" " " set
 Reference - C.S. File - M 56-60

MAP FILE 73-18

MAP FILE M 73-18

REGISTERED
PROFESSIONAL
LAND SURVEYOR

W. S. Barnes

WILLIAM S. BARNES
1978