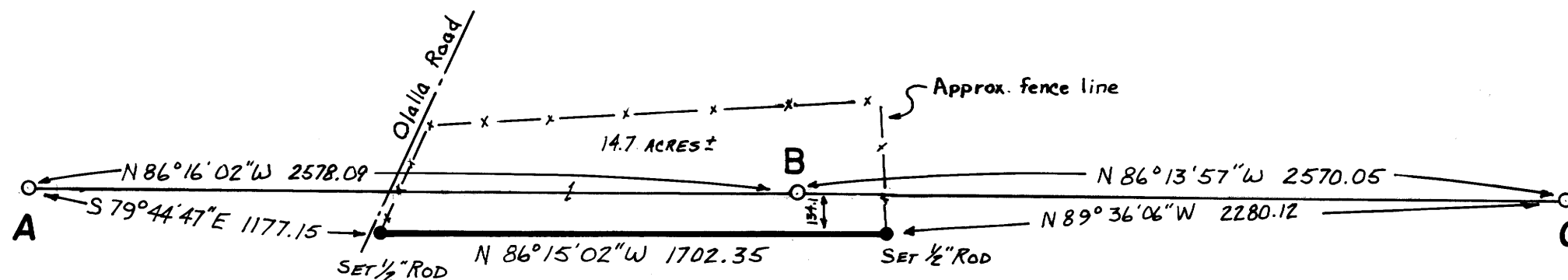


SURVEY OF DIVISION LINE OF PROPERTY IN SEC 34, T. 28 S., R. 7 W. & SEC. 3, T. 29 S., R. 7 W. ↗

for DAVID STINE in October of 1978 by UMPQUA SURVEYING COMPANY, Myrtle Creek



BASIS OF BEARINGS
MAGNETIC, DECL. 20°E
SCALE: 1" = 500'

A SECTION CORNER

Fd. W. OAK WITH GOOD SCAR
S 89° W, 61' FT.

Fd. FORKED W. OAK STUMP WITH GOOD SCAR
N 34° E, 181' FT.

Fd. LARGE CEDAR WITH VISIBLE SCRIBING
BOYER'S DIST. CHECKED

I DID NOT FIND OR SET A MONUMENT AT
CORNER

B FD. BOYER'S 1/4 CORNER

Fd. MOUND OF 4 OR 5 ROCKS, ONE BEING
APPROX. 4" x 8" x 10", AND THE REMAINS OF
A CEDAR POST

Fd. OAK NEAR E-W FENCE WITH GOOD SCAR
N 41° 15' W, 386.5 FT.

Fd. 53" B. OAK WITH VISIBLE "B.T."
N 60° 30' E, 257.7 FT.

Fd. W OAK WITH GOOD SCAR
S 78° 10' E, 293.9 FT.

SET 3/4" ROD AT BOYER'S CORNER

C SECTION CORNER

Fd. AXLE WITH GEAR

Fd. 40" W. OAK, VERY OLD, HOLLOW, GOOD FACE
N 73° 46' E, 132' FT.

Fd. 45" W. OAK WITH GOOD SCAR
N 24° 58' W, 409' FT.

REGISTERED
OREGON
LAND SURVEYOR

William J. Ruppert
JULY 22 1978
WILLIAM J. RUPPERT
866