

COUNTY SURVEYORS FILE DATA
DO NOT REMOVE FROM OFFICE

SURVEY FOR MORTGAGE PURPOSES

IN SECTION 18, T.26S. R.3W. W.M.

FOR: CARL MINOR
BY: BAUGHMAN TECHNICAL SERVICES INC.

OCTOBER 1978 - SCALE: 1=40'

FILED ✓
RECEIVED JAN 4

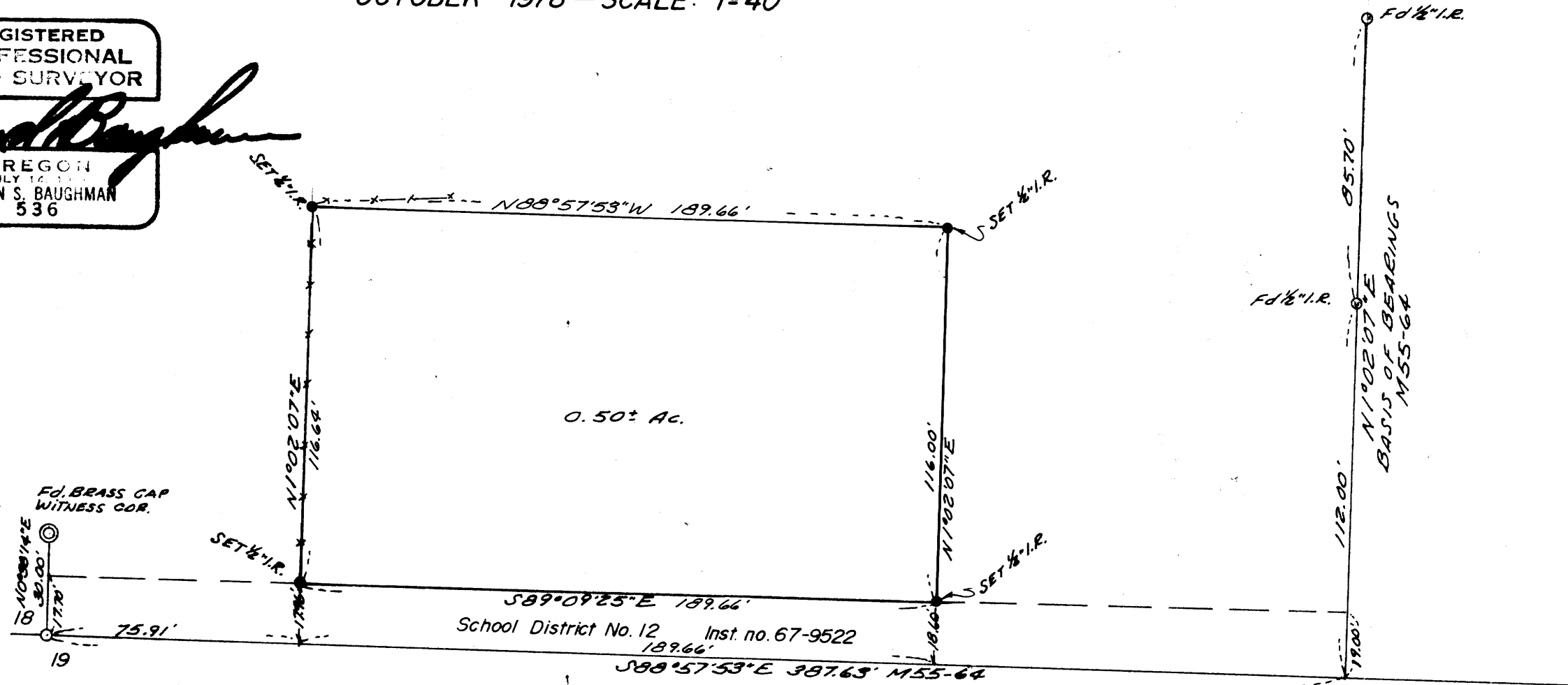
OCT 28 1978

COUNTY SURVEYOR
DOUGLAS COUNTY, ORE.

TB

REGISTERED
PROFESSIONAL
LAND SURVEYOR

OREGON
JULY 12, 1951
GLENN S. BAUGHMAN
536



MAP FILE M 73-72

MAP FILE M 73-72