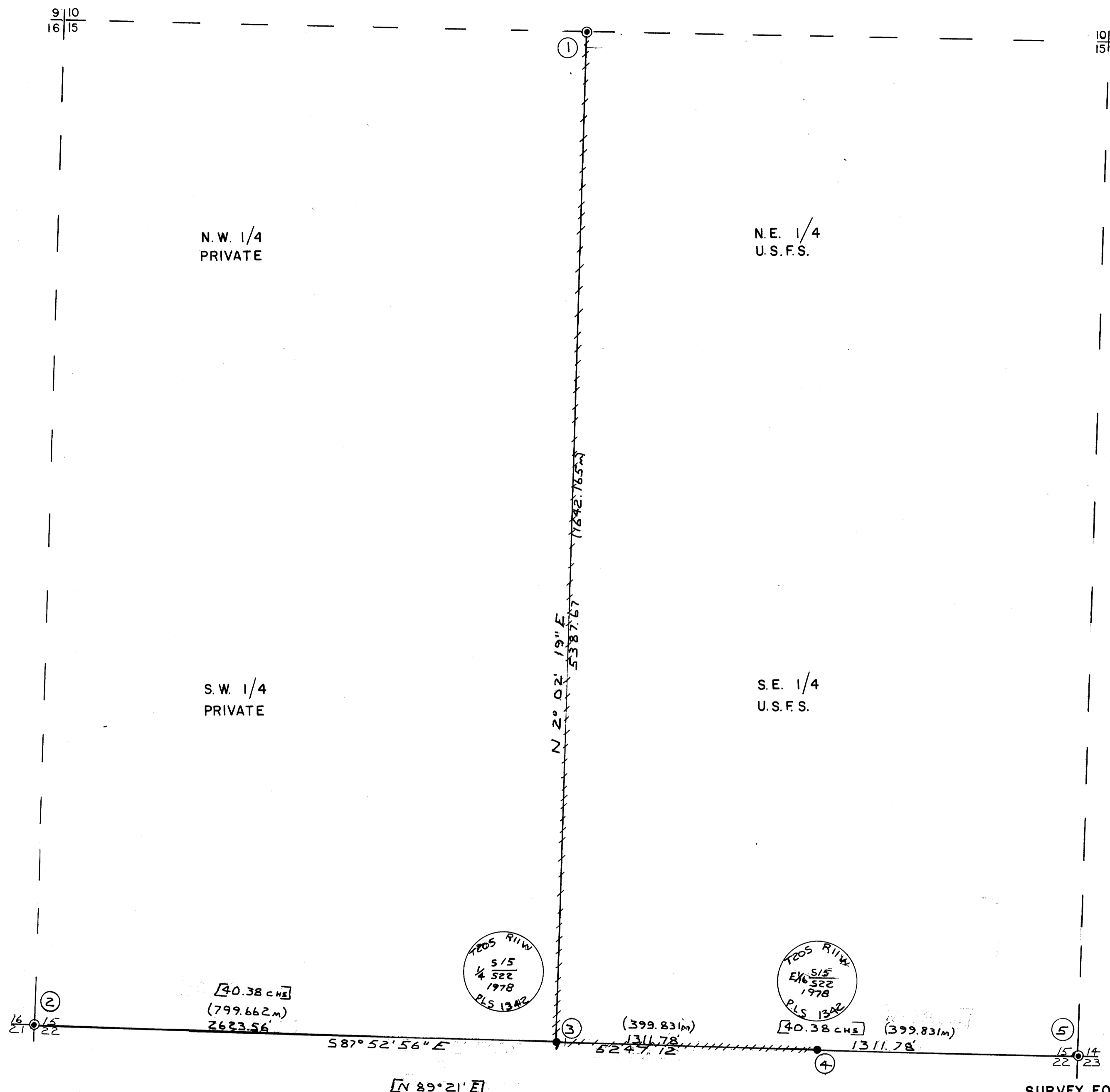


# SUBDIVISION SEC. 15, T.20S., R.11W., W.M.

## DOUGLAS COUNTY, OREGON

FILED  
RECEIVED  
SEP 7 1978  
COUNTY SURVEYOR  
DOUGLAS COUNTY, ORE.  
TH



**CORNER NOTES:**

- ① FOUND 2" DOUGLAS CO. SURVEYORS OFFICE B.C.I.P. FOR 1/4 CORNER SEC. 15 MKD. "T. 20S. R.11W. S. 1/4 S10/S15 1969", WITH STEEL POST ALONG SIDE, FROM WHICH: 30" D. FIR STUMP N.58°W. 29.7 FT.; 48" D. FIR N.88°E. 178.8 FT.; 48" D. FIR S.64°E. 184.0 FT.
- ② FOUND 2" DOUGLAS CO. SURVEYORS OFFICE B.C.I.P. FOR CORNER TO SECS. 16, 15, 21 AND 22 MKD. "T. 20S. R.11W. S.16, S.15 S.21 S.22", FROM WHICH: UNRECORDED BRASS CAP N.89°30'E. 2.45 FT.; 6" ALDER S.86°30'E. 18.20 FT.; 16" CEDAR N.16°E. 19.8 FT.; 60" SAWED OFF D. FIR STUMP S.63°30'W. 4.62 FT.
- ③ SET B.C.I.P. MORTARED IN SANDSTONE MKD. AS SHOWN, FOR S 1/4 CORNER SEC. 15 FROM WHICH: 34" D. FIR N.84°E. 67.22 FT., 12" R. ALDER S.2°W. 37.67 FT., 48" D. FIR SNAG NORTH 12.2 FT., 36" D. FIR STUMP S.37°E. 31.95 FT.
- ④ SET MAG. ALUM. CAP MKD. AS SHOWN, FOR E 1/16 CORNER SEC. 15, FROM WHICH: 12" D. FIR S. 64° E. 109.26 FT., 10" R. ALDER S. 28°W. 13.0 FT.
- ⑤ FOUND 2" DOUGLAS CO. SURVEYORS OFFICE B.C.I.P. FOR CORNER TO SECS. 15, 14, 22, 23 MKD. "T. 20S. R.11W. S15 S14 S22 S23 1968", FROM WHICH: 45" D. FIR STUMP N.45°30'W. 9.14 FT., 35" D. FIR STUMP N.88°30'E. 12.54 FT., 60" D. FIR STUMP N.9°E. 45.68 FT.

REGISTERED  
PROFESSIONAL  
LAND SURVEYOR  
*Ronald E. Stuntzner*  
OREGON  
SEPTEMBER 2, 1977  
RONALD E. STUNTZNER  
1342



**LEGEND**

- CORNERS SET
- CORNERS FOUND
- LINE MKD. WITH U.S.F.S. BDY TAGS ON METAL FENCE POST
- GOVERNMENT RECORD BEARINGS AND DISTANCES [S 87° 52' 56"]
- METRIC DISTANCE IN METERS (399.83m)

I, RONALD E. STUNTZNER, A REGISTERED LAND SURVEYOR IN AND FOR THE STATE OF OREGON, HEREBY CERTIFY THAT THIS PLAT AND THE NOTES HEREON ARE A CORRECT REPRESENTATION OF A SURVEY I PERFORMED DURING JULY AND AUGUST, 1978, FOR THE U.S. FOREST SERVICE, IN ACCORDANCE WITH THE STATUTES OF THE STATE OF OREGON AND WITH THE ARTICLES OF MY CONTRACT.

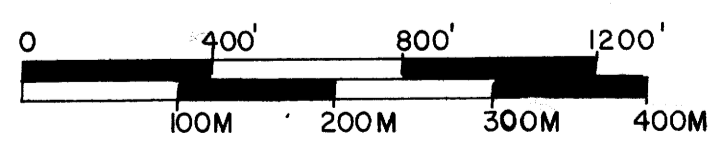
*Ronald E. Stuntzner*

RONALD E. STUNTZNER  
REGISTERED LAND SURVEYOR  
OREGON LICENSE NO. 1342

SURVEY FOR:  
U.S. FOREST SERVICE  
SIUSLAW NATIONAL FOREST  
CORVALLIS, OREGON 97330

SURVEY BY:  
STUNTZNER ENGINEERING & FORESTRY  
P.O. BOX 118  
COOS BAY, OREGON 97420

NOTE BASIS OF BEARING IS SOLAR OBSERVATION  
DATE 8 28 78  
SCALE 1"=400'



MAP FILE M173 - Z

MAP FILE M173 - Z