

LINE SURVEY
IN SEC'S 25 & 36, T.22 S., R.12 W., W.M. 10 NOT REMOVE FROM OFFICE
DOUGLAS COUNTY, OREGON

COUNTY SURVEYORS FILE DATA

FILED *JHM*
 RECEIVED

OCT 13 1978

COUNTY SURVEYOR
 DOUGLAS COUNTY, ORE.

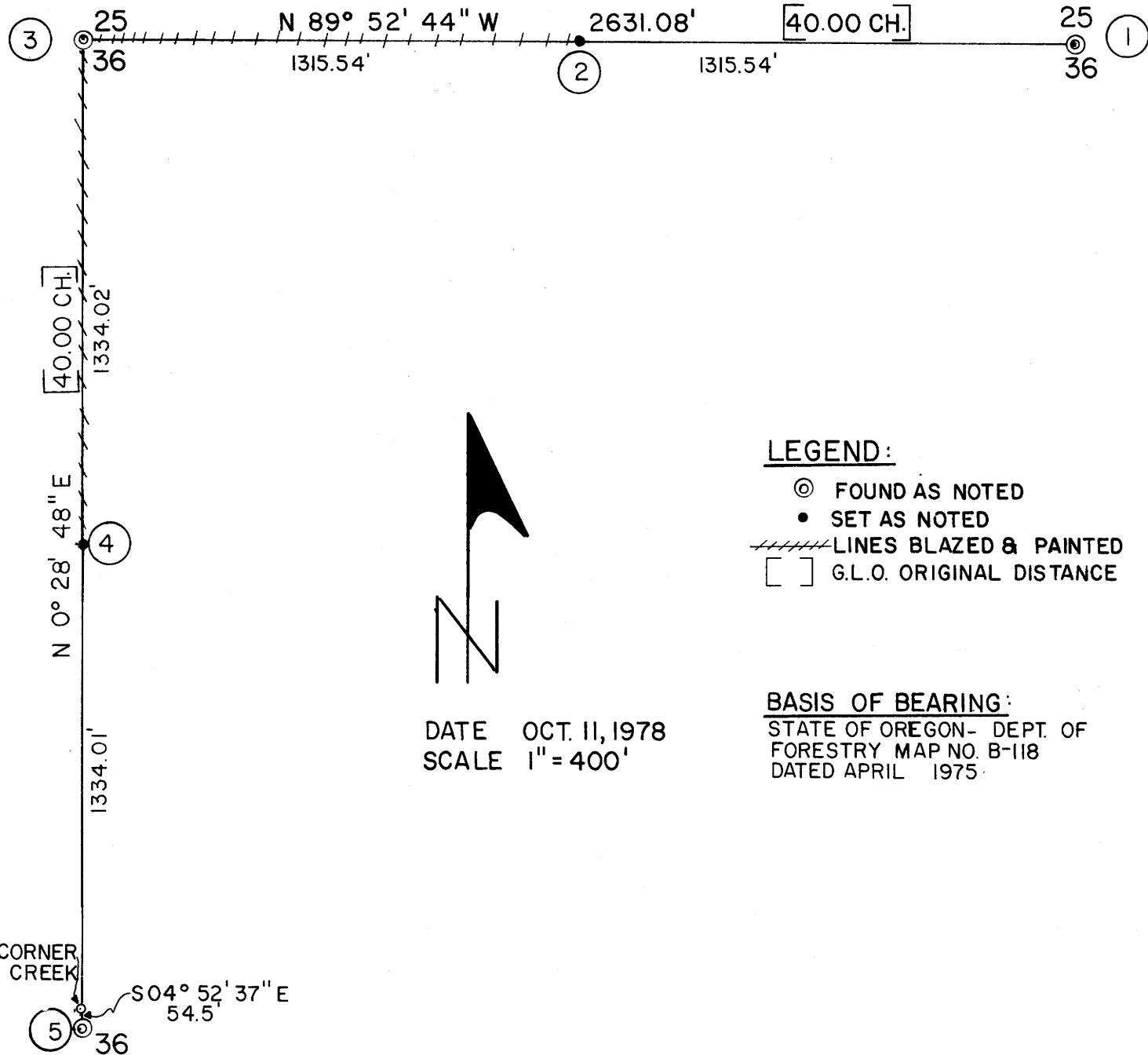
TB

SURVEY FOR:
 BOHEMIA INC.
 % DOUG STOUT
 BOX 107
 LAKESIDE, OR 97449

SURVEY BY:
 STUNTZNER ENGINEERING & FORESTRY
 P.O. BOX 118, 375 PARK
 COOS BAY, OR 97420

CORNER NOTES:

- ① FOUND ORE. STATE BOARD OF FORESTRY 1 1/2" IRON PIPE WITH CAP FOR 1/4 CORNER BETWEEN SEC'S 25 & 36, IN CONCRETE, IN SANDSTONE BEDROCK, FROM WHICH BEARS; A 30" CEDAR N47°E 44.4', A 19" CEDAR S32°W 63.6.
- ② SET 5/8" IRON ROD AT W. 1/6 FOR SEC. 36 FROM WHICH BEARS; A 14" ALDER S19°W 33.3', A 16" RED CEDAR N 46°W 39.0
- ③ FOUND ORE. STATE BOARD OF FORESTRY 1 1/2" IRON PIPE WITH CAP AT SECTION CORNER (WEST END) FOR SEC'S 25 & 36 FROM WHICH BEARS; A 27" FIR S 28°E 18.5', A 29" FIR N 53°E 98.4'
- ④ SET 5/8" IRON ROD AT N 1/16 TO SEC. 36 ONLY FROM WHICH BEARS; A 16" ALDER S89°W 22.94', A 18" MYRTLE N42°E 20.97'
- ⑤ FOUND ORE. STATE BOARD OF FORESTRY 1 1/2" IRON PIPE WITH CAP AT WITNESS CORNER TO W. 1/4 CORNER SEC. 36 ONLY FROM WHICH BEARS; A 21" ALDER N38°E 71.4', A 12" ALDER S34°E 168.8'. THIS WITNESS CORNER BEARS S 04°52'37"E 54.5' FROM THE TRUE 1/4 CORNER WHICH FALLS IN CREEK.



LEGEND:

- ⊙ FOUND AS NOTED
- SET AS NOTED
- ////// LINES BLAZED & PAINTED
- [] G.L.O. ORIGINAL DISTANCE

DATE OCT. 11, 1978
 SCALE 1" = 400'

BASIS OF BEARING:
 STATE OF OREGON- DEPT. OF
 FORESTRY MAP NO. B-118
 DATED APRIL 1975

REGISTERED
 PROFESSIONAL
 LAND SURVEYOR

Ronald E. Stuntzner

OREGON
 RONALD E. STUNTZNER
 1342

MAP FILE M 73-66

MAP FILE M 73-66