

SURVEY TO SET SECTION CORNER

SECTIONS 7, 8, 17 & 18, T.27S. R.3W. W.M.

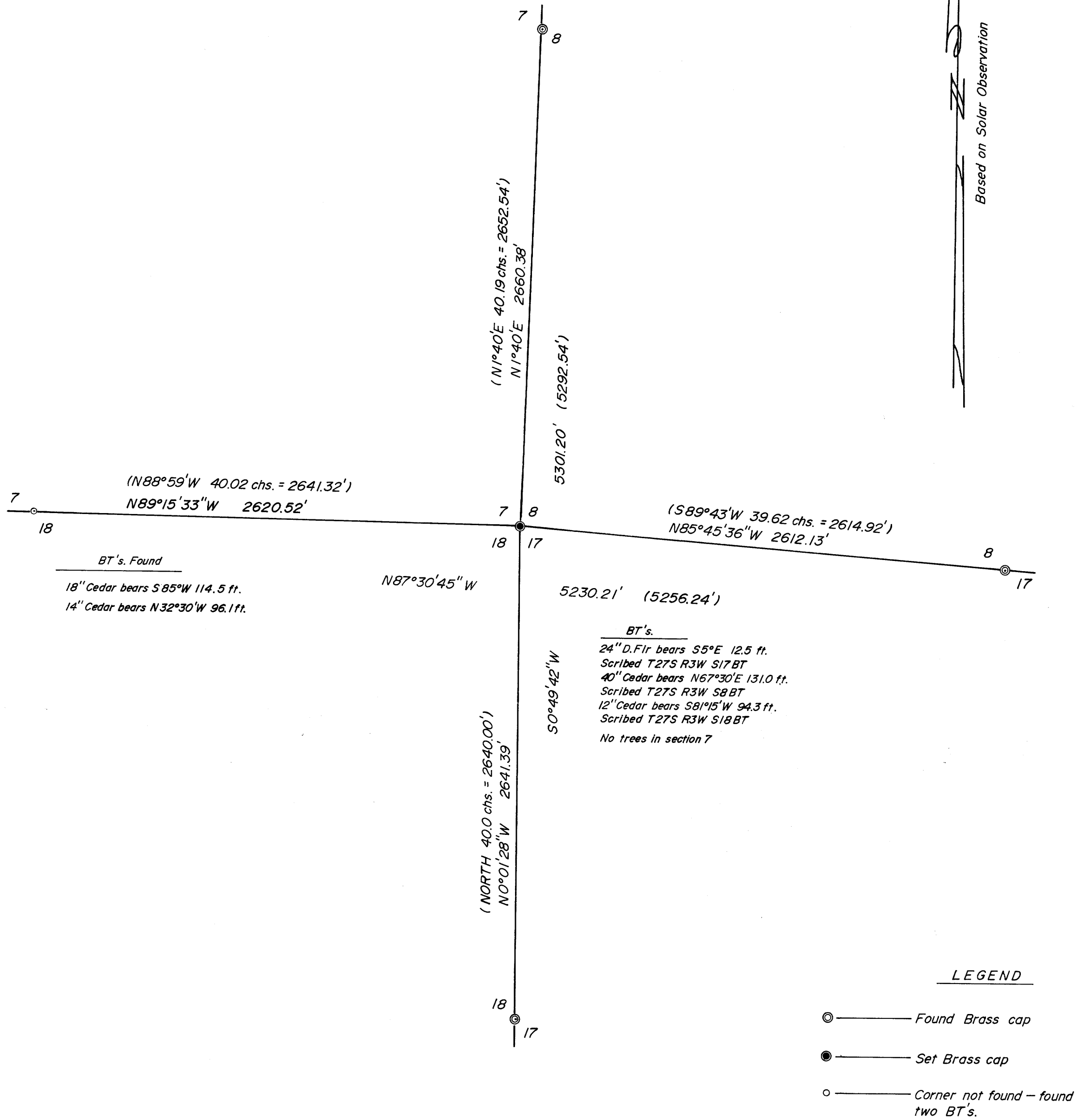
FOR: **TEECO**
BY: **BAUGHMAN TECHNICAL SERVICES INC.**

FILED *JH*
RECEIVED *JH*
OCT 9 1978

COUNTY SURVEYOR
DOUGLAS COUNTY, ORE. *JH*

SEPTEMBER 1978 — SCALE: 1" = 500'

REGISTERED
PROFESSIONAL
LAND SURVEYOR
Alan H. Baughman
ALAN H. BAUGHMAN
336



SEE ALSO N 74-29

FM 6-61