

COMMON SURVEYING FILE DATA  
DO NOT REMOVE FROM OFFICE

SECT. 17, T.22S., R.5 W. W.M.

for  
Edward + Stella Gaudu  
2316 SYCAMORE DR.  
Simi Valley, Calif. 93065

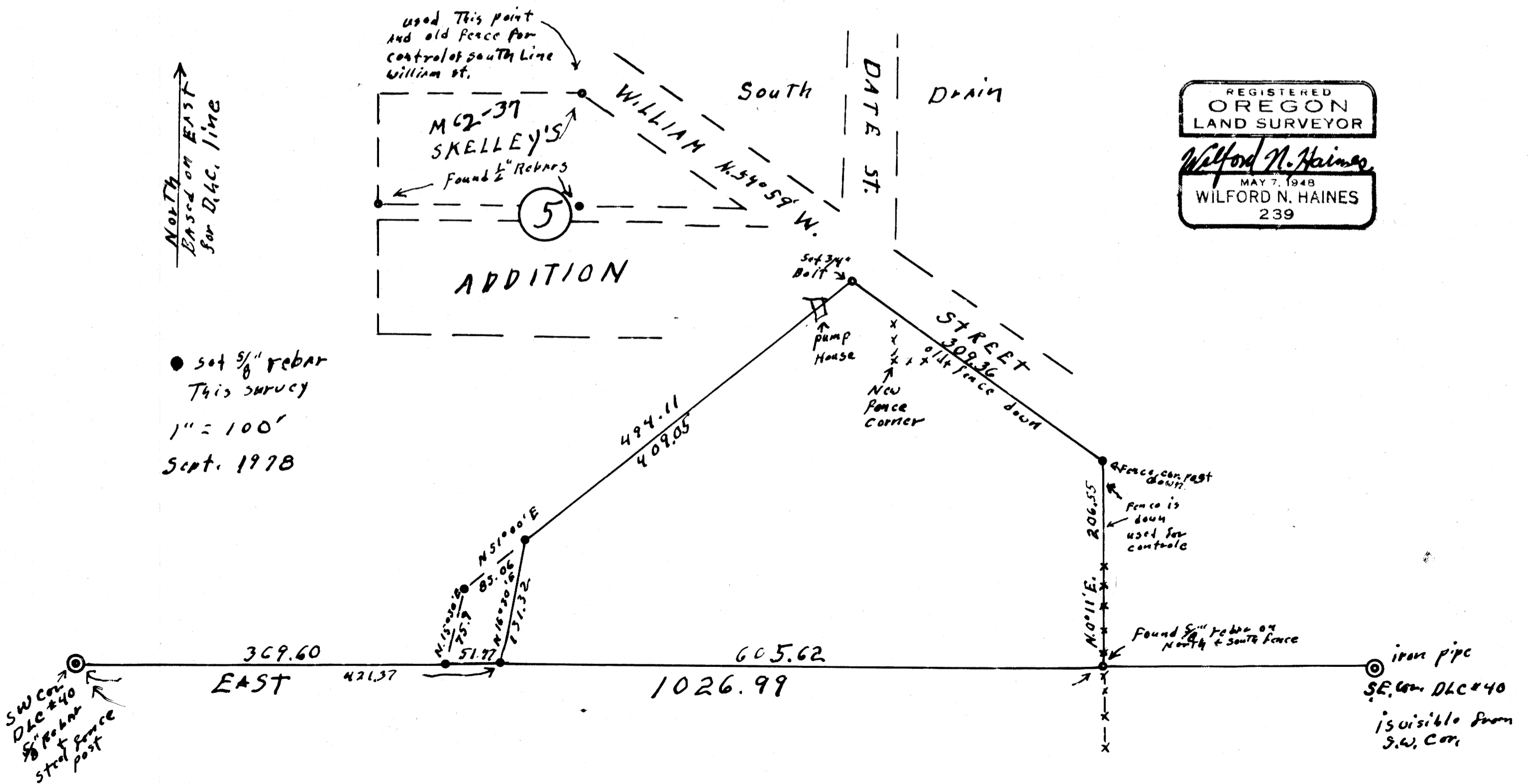
FILED ✓  
RECEIVED *th*

OCT 4 1978

COUNTY SURVEYOR  
DOUGLAS COUNTY, ORE.

TB

MAP FILE M 73-48



REGISTERED  
OREGON  
LAND SURVEYOR  
*Wilford N. Haines*  
MAY 7, 1948  
WILFORD N. HAINES  
239

MAP FILE M 73-48