

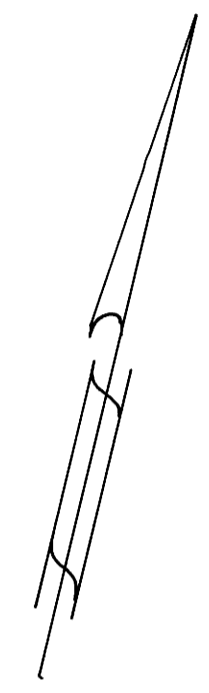
COUNTY SURVEYORS FILE DATA
DO NOT REMOVE FROM OFFICE

FILED *✓*
RECEIVED *2h*
SEP 21 1978
BY SURVEYOR
WILLAMETTE COUNTY, OREGON
TH

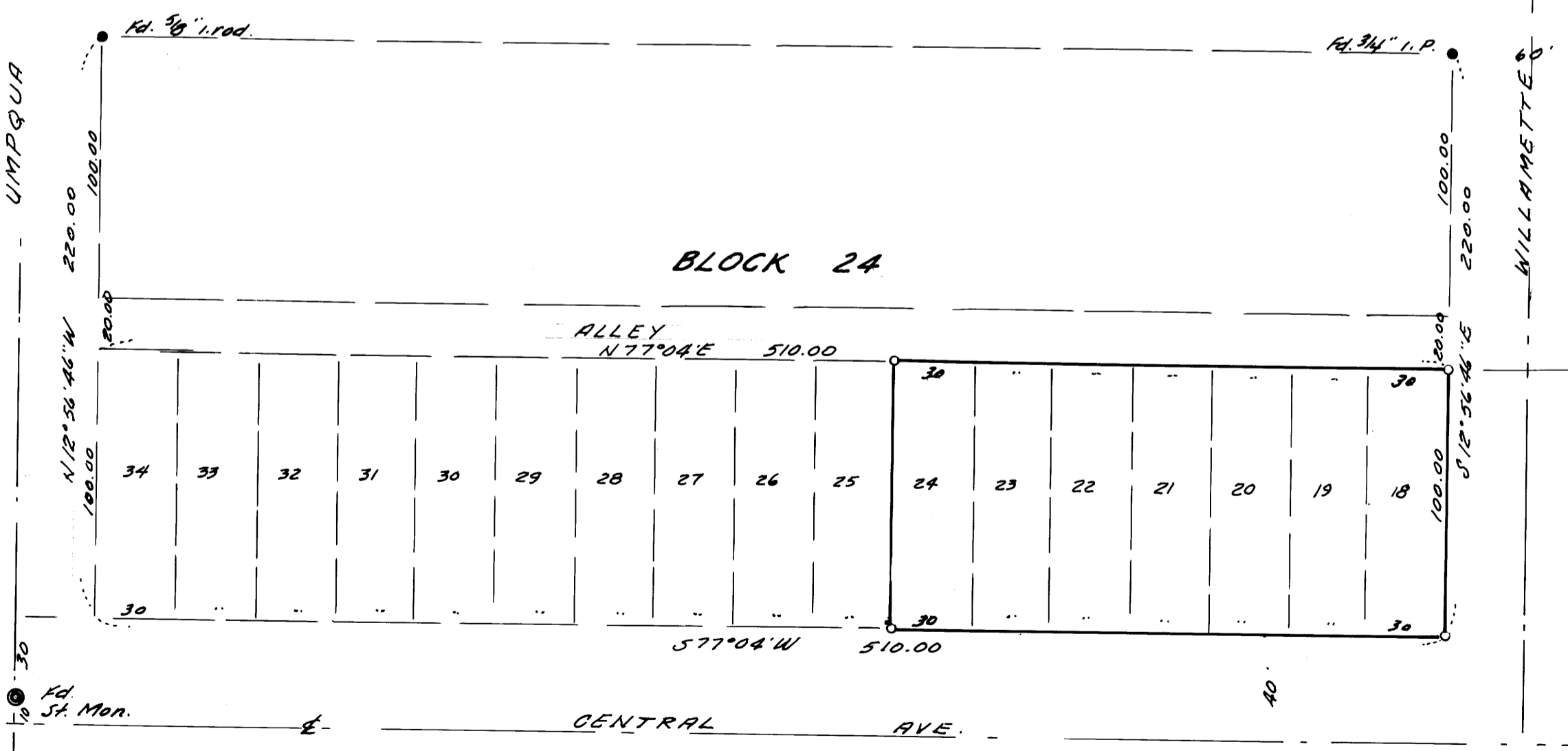
SURVEY TO SET PROPERTY CORNERS
BLOCK 24, AMENDED PLAT TOWNSITE OF SUTHERLIN
SEC. 17, T25S, R5W, W.M.
SURVEYED FOR - SUTHERLIN PUMP & FARM SUPPLY
SURVEYED BY - W.S. BARNES ENGINEERING SERVICE. SEPT. 1978

Fd. 1" I.P. N.W. Cor.
Lot 1, BIK. 11.

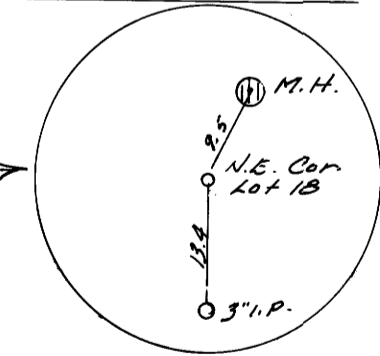
ST
N12°58'46" W (50'00" Bearing)



SCALE 1" = 50'



LOT COR. DETAIL



○ Denotes 5/8" I. rods set.
● " monuments found.

REGISTERED
PROFESSIONAL
LAND SURVEYOR

W. S. Barnes

OREGON
SEPT. 20, 1977
WILLIAM S. BARNES
1931

MAP FILE M 73-93

M 73-93