

COUNTY SURVEYORS FILE DATA
DO NOT REMOVE FROM OFFICE

FILED *d*
RECEIVED *dk*

COUNTY SURVEYOR
DOUGLAS COUNTY, ORE.
TH

SURVEY FOR DOUGLAS CO. LAND DEPT.

IN SEC. 11, T 27 S, R 6 W, W.M.

BY

FRANCIS L. INGRAM DOUGLAS CO. SURVEYOR

SEPT. 1978

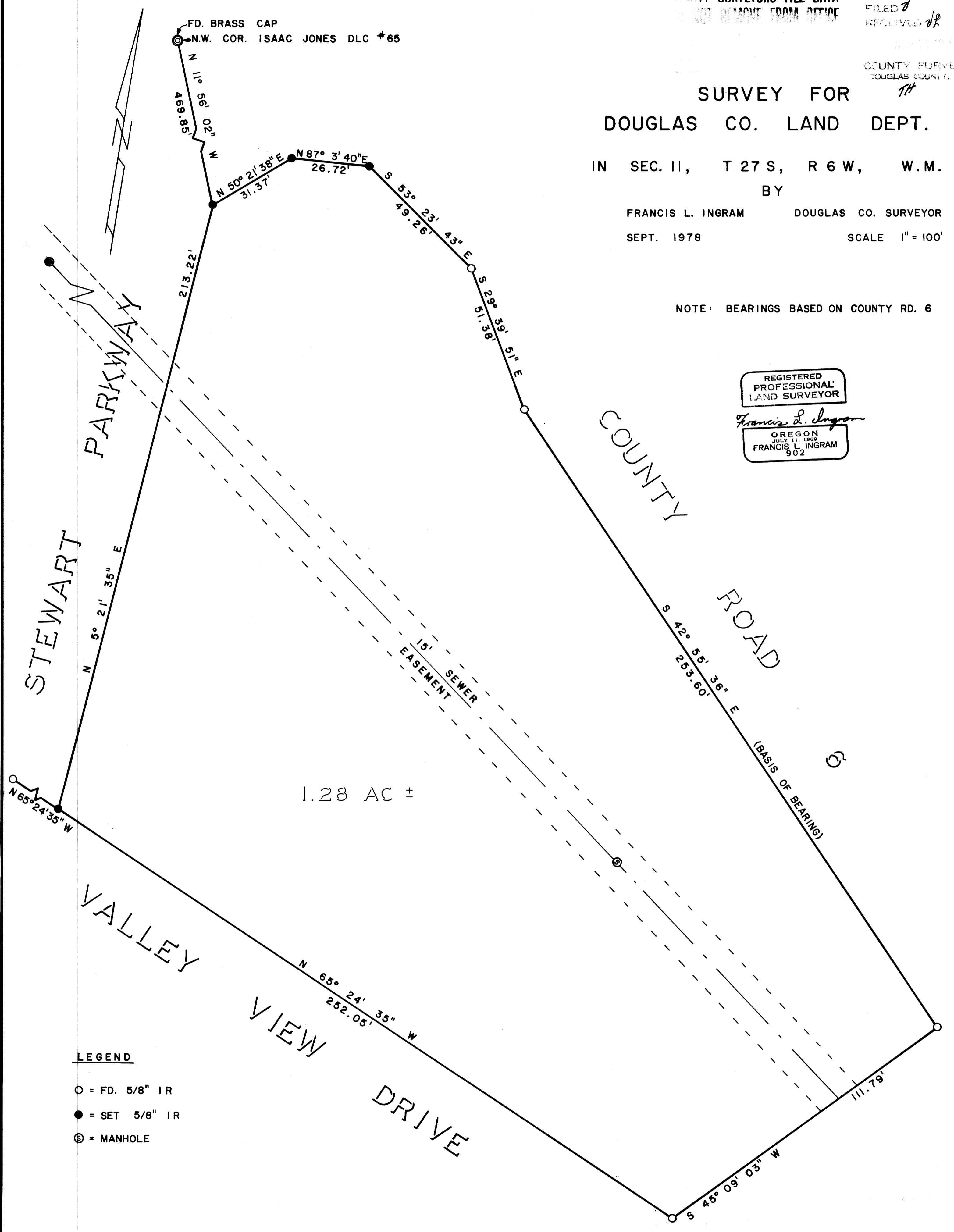
SCALE 1" = 100'

NOTE: BEARINGS BASED ON COUNTY RD. 6

REGISTERED
PROFESSIONAL
LAND SURVEYOR

Francis L. Ingram

OREGON
JULY 11, 1968
FRANCIS L. INGRAM
902



LEGEND

- = FD. 5/8" IR
- = SET 5/8" IR
- ⊗ = MANHOLE

CS FILE FOLDER

CONTAINS

MORE

INFORMATION