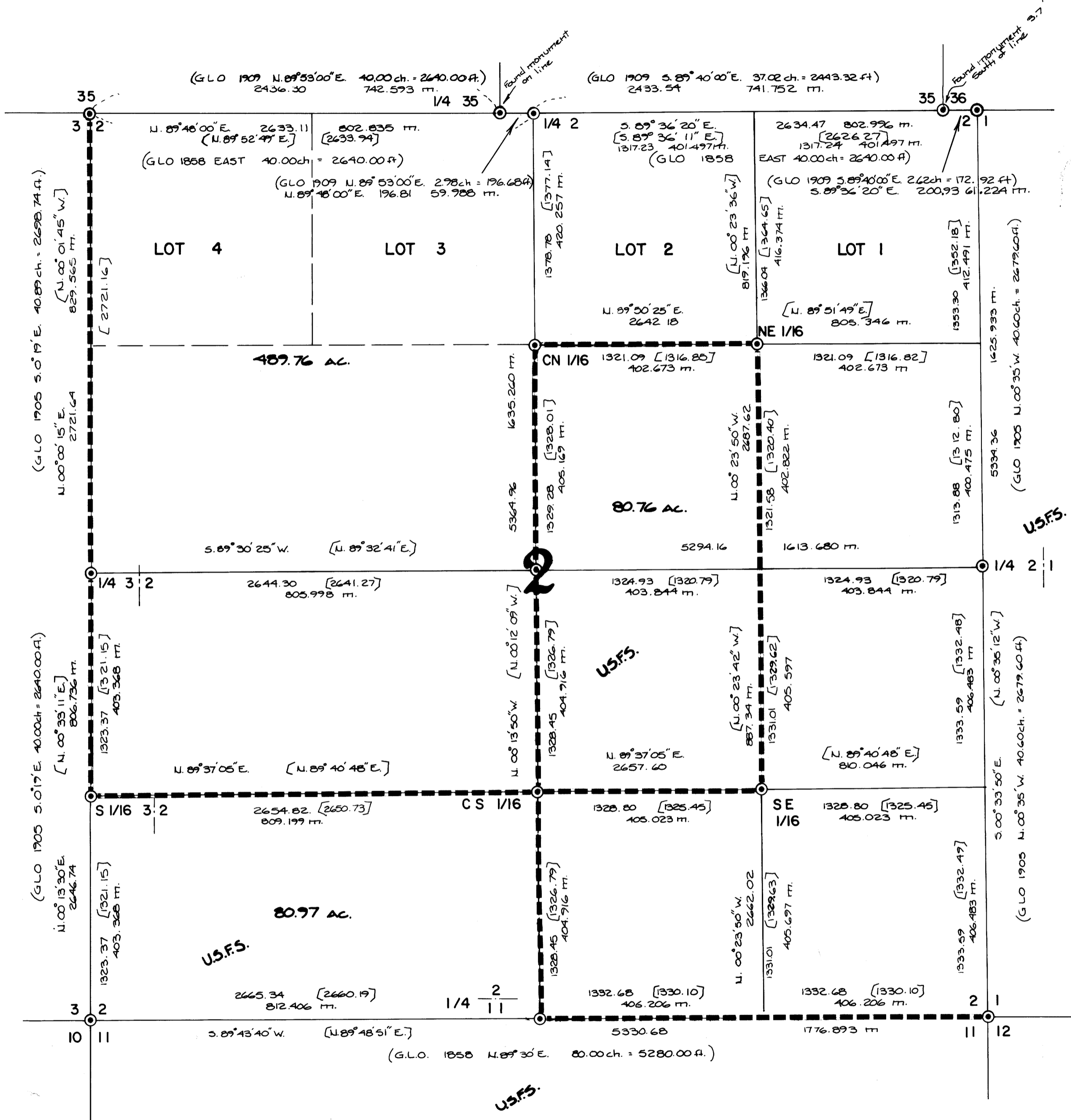
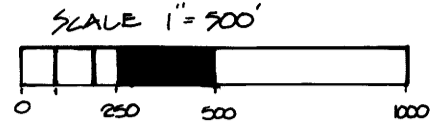


# U.S. FOREST SERVICE

Section 2, T.30S. R.1W., WM.  
Douglas County, Oregon

August 31, 1978

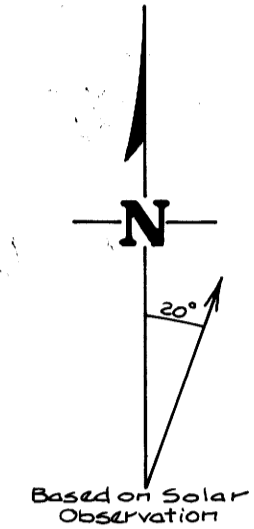
Project Name Tiller Land survey no 27  
Contract No. 006800N.  
Field Book Ref. 10,13,14,20,22,23,24



- ⊙ Found Aluminum Cap
- ( ) GLO Record
- Property lines marked with 6 foot metal fence posts and national forest boundary signs.
- [ ] Record Per M36-14

All bearing trees are tagged & banded with red paint bearing trees marked during this survey have a brass washer stamped "PDS 1068" nailed to the lower blaze.

\* Bearings and distances are from the new monument to the bearing trees.



FILED  
RECEIVED  
SEP 15 1978  
COUNTY SURVEYOR  
DOUGLAS COUNTY, ORE.  
TH

- 35/32 Found 1967 Aluminum Cap R.E. 4287  
14" D Fir S. 27° W. 27.5 ft.  
9" D Fir U. 26° W. 22.2 ft. (22.5)
- 1/4 35 Found 1967 Aluminum Cap R.E. 4287  
50" D Fir Stump Down (N. 65° E. 25.5') Visible  
45" D Fir Stump Down (N. 60° W. 32.5') Scribing  
9" D Fir Snag N. 32° E. 19.9'  
4" D Fir Stump Down S. 24° W. 16.0'
- 1/4 2 Found 1967 Aluminum Cap R.E. 4287  
8" G Fir S. 47° W. 14.6'  
19" D Fir Stump S. 20° E. 42.2'
- 35/36 Found 1967 Aluminum Cap R.E. 4287 Set in original rotten sugar pine corner. Monument is 3.7' S. of true line.  
Depression for sugar pine (26" spine N. 35° E. 1.53 down)  
16" D Fir High stump w/visible scribing N. 53° W. 33.4' (34.5')  
24" D Fir w/visible scribing N. 45° E. 13.7'  
10" Cedar down w/visible scribing N. 61° W. 12.4'
- 36/21 Found 1967 Aluminum Cap R.E. 4287  
24" D Fir S. 46° E. 20.9'  
28" D Fir S. 60° W. 17.5'  
34" D Fir U. 41 1/2° E. 45.8'  
30" Hemlock down (S. 40° W. 11.20')
- 3/2/10/11 Found 1967 Aluminum Cap R.E. 4287  
72" D Fir U. 36° W. 40.3' } w/visible scars  
18" Maple S. 8° W. 25.3' } Original  
60" D Fir U. 85° E. 34.2' }  
48" W Fir S. 75° E. 83.8' } Chopped out face  
10" W Fir N. 66° W. 28.5' } w/visible scars  
10" W Fir S. 68° W. 14.3' }
- 2/1/11/12 Found Brasscap R.E. 4287  
24" D Fir S. 32° E. 21.0' Down (original)  
6" Cedar U. 3° E. 11.6'  
8" G Fir N. 44 1/2° E. 22.1' } w/visible scribing  
10" D Fir S. 1° E. 23.6'  
6" Cedar S. 36° W. 22.9'
- 1/4 3/2 Found 1977 County Brasscap  
45" D Fir N. 25° E. 29.6' w/visible face  
13" Yew N. 81° W. 11.2' w/visible scribing  
25" I. Cedar Stump S. 70° W. 43.2' burnt
- S 1/16 3/2 Found 1967 Aluminum Cap R.E. 4287  
10" D Fir S. 70° W. 18.1' } w/visible scribing  
12" G Fir S. 34° E. 22.0' }  
6" D Fir U. 8° W. 5.1' w/"X" (not of record)
- CN 1/16 Found 1967 Aluminum Cap R.E. 4287  
8" G Fir N. 53° W. 20.8' } w/visible scribing  
10" G Fir U. 13° W. 23.2' }
- NE 1/16 Found 1967 Aluminum Cap R.E. 4287  
5.49' S. 00° W. 0.93' from the true cor. from which found  
9" Hemlock U. 50° E. 11.2' } w/visible scribing  
21" I. Cedar S. 67° W. 11.0' }  
Marked 10" D Fir U. 13° W. 19.9' NE 1/16 S. 2° E. 1.0' }  
Set 2 1/2" x 30" Galvanized Iron Pipe with Brasscap  
found Aluminum Cap 4287 S. 26° 50' 15" W. 2.71'  
14" D Fir N. 73° E. 11.6'  
10" D Fir S. 3° W. 15.1' } w/visible scribing
- \* C 1/4 Set 2 1/2" x 30" Galvanized Iron Pipe with Brasscap  
at proportionate distance  
Found 12" D Fir N. 49° E. 16.4' w/visible scribing  
12" D Fir S. 15° W. 11.0'  
1967 Aluminum Cap R.E. 4287  
S. 03° 38' 00" E. 4.5'  
5' x 6' 12" stone S. 76° 07' 25" W. 37.80'  
marked "x" on North face & "14" on South face from which found  
15" D Fir S. 78° E. 15.5'  
14" D Fir U. 35° E. 13.9' w. Healed face  
Not of record
- \* CS 1/16 Set 2 1/2" x 30" Galvanized Iron Pipe with Brasscap  
at proportionate distance  
Found 12" D Fir N. 49° E. 16.4' w/visible scribing  
12" D Fir S. 15° W. 11.0'  
1967 Aluminum Cap R.E. 4287  
S. 03° 38' 00" E. 4.5'  
5' x 6' 12" stone S. 76° 07' 25" W. 37.80'  
marked "x" on North face & "14" on South face from which found  
15" D Fir S. 78° E. 15.5'  
14" D Fir U. 35° E. 13.9' w. Healed face  
Not of record
- \* 1/4 2/11 Set 2 1/2" x 30" Galvanized Iron Pipe with Brasscap  
at proportionate distance  
Found 12" D Fir N. 49° E. 16.4' w/visible scribing  
12" D Fir S. 15° W. 11.0'  
1967 Aluminum Cap R.E. 4287  
S. 03° 38' 00" E. 4.5'  
5' x 6' 12" stone S. 76° 07' 25" W. 37.80'  
marked "x" on North face & "14" on South face from which found  
15" D Fir S. 78° E. 15.5'  
14" D Fir U. 35° E. 13.9' w. Healed face  
Not of record

I, DAVID K. BATEMAN, A REGISTERED LAND SURVEYOR IN THE STATE OF OREGON HEREBY CERTIFY THAT THIS PLAT AND NOTES HEREON, OR ATTACHED ARE A CORRECT REPRESENTATION OF A SURVEY I PERFORMED DURING JULY - AUGUST, 1978 FOR THE U.S. FOREST SERVICE, IN ACCORDANCE WITH THE STATUTES OF THE STATE OF OREGON AND WITH THE ARTICLES OF MY CONTRACT.

David K. Bateman  
Registered Land Surveyor  
No. 1068

REGISTERED PROFESSIONAL LAND SURVEYOR  
David K. Bateman  
OREGON  
JULY 30, 1976  
DAVID K. BATEMAN  
1068

TIMBERLAND SERVICES, INC.  
1010 Airport Road P.O. Box 668  
Albany Ore. 97321  
Ph. (503) 926-9404  
SURVEYING - ENGINEERING  
LAND USE PLANNING  
FORESTRY CONSULTING

U.S.F.S.

U.S.F.S.

U.S.F.S.

U.S.F.S.

U.S.F.S.

MAP FILE M23-24

MAP FILE M23-24