

SURVEY FOR DEED DESCRIPTION

in the TOWN OF RIDDLE plat T305 R6W WM
for Jerald Jordan

July, 1978

Scale: 1" = 20'

COUNTY SURVEYORS FILE DATA
DO NOT REMOVE FROM OFFICE

FILED
RECEIVED

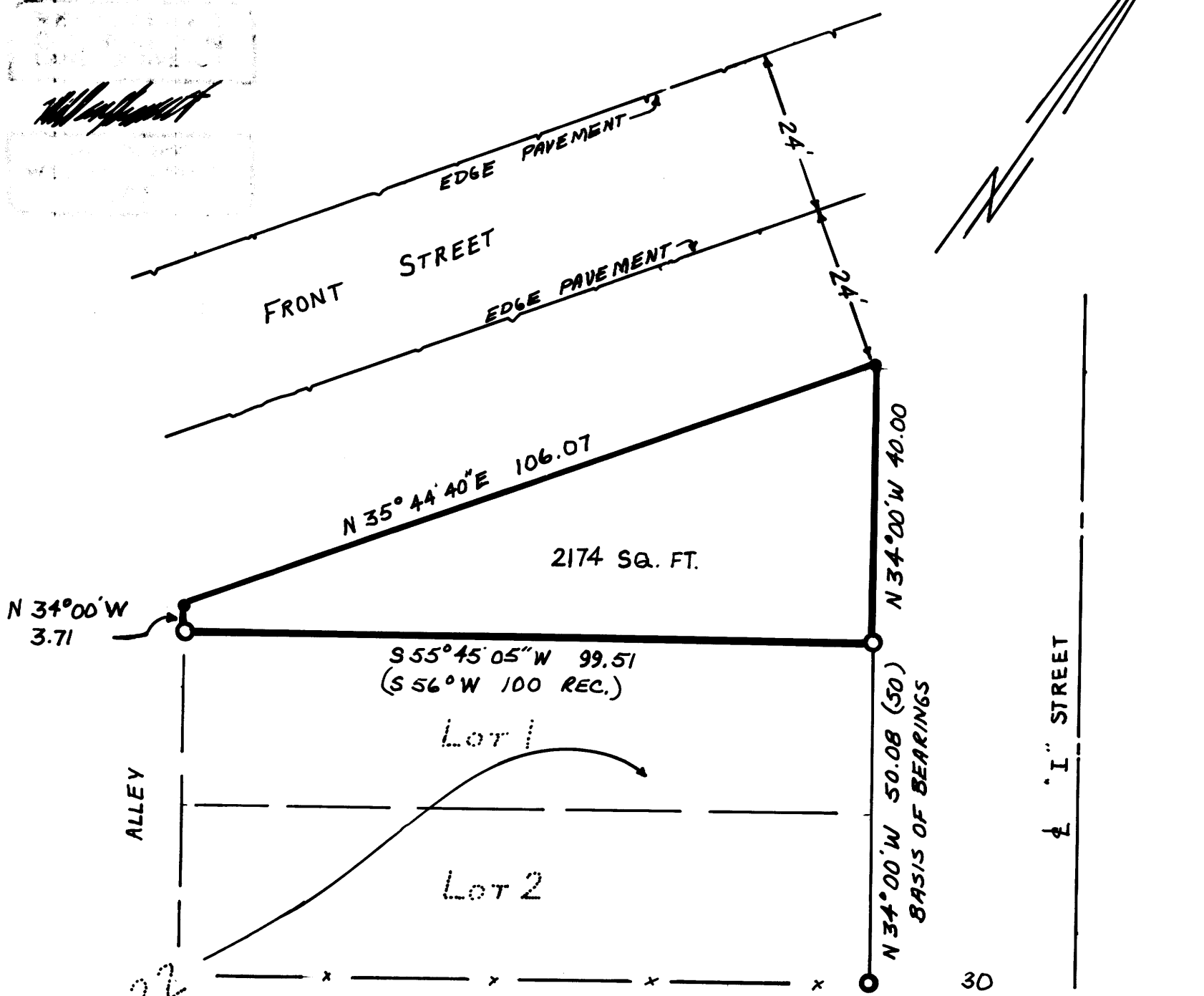
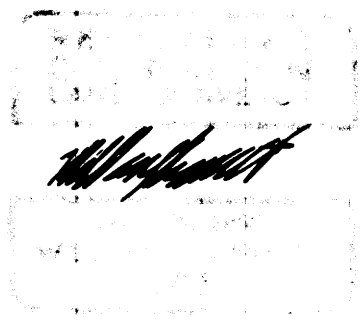
JUL 17 1978

COUNTY SURVEYOR
DOUGLAS COUNTY, ORE.

18

LEGEND:

- fd 1" pipe per C.S. 51/177
- set 3/4" rod
- () record per plat



UMPQUA SURVEYING COMPANY ~ MYRTLE CREEK