

SURVEY IN SECTION 14, T.27 S., R. 6 W., W. M.
 SURVEYED FOR GEORGE JAMES
 SURVEYED BY R. H. GEE AUGUST, 1978
 SCALE 1" = 50'

COUNTY SURVEYORS FILE DATA
 DO NOT REMOVE FROM OFFICE

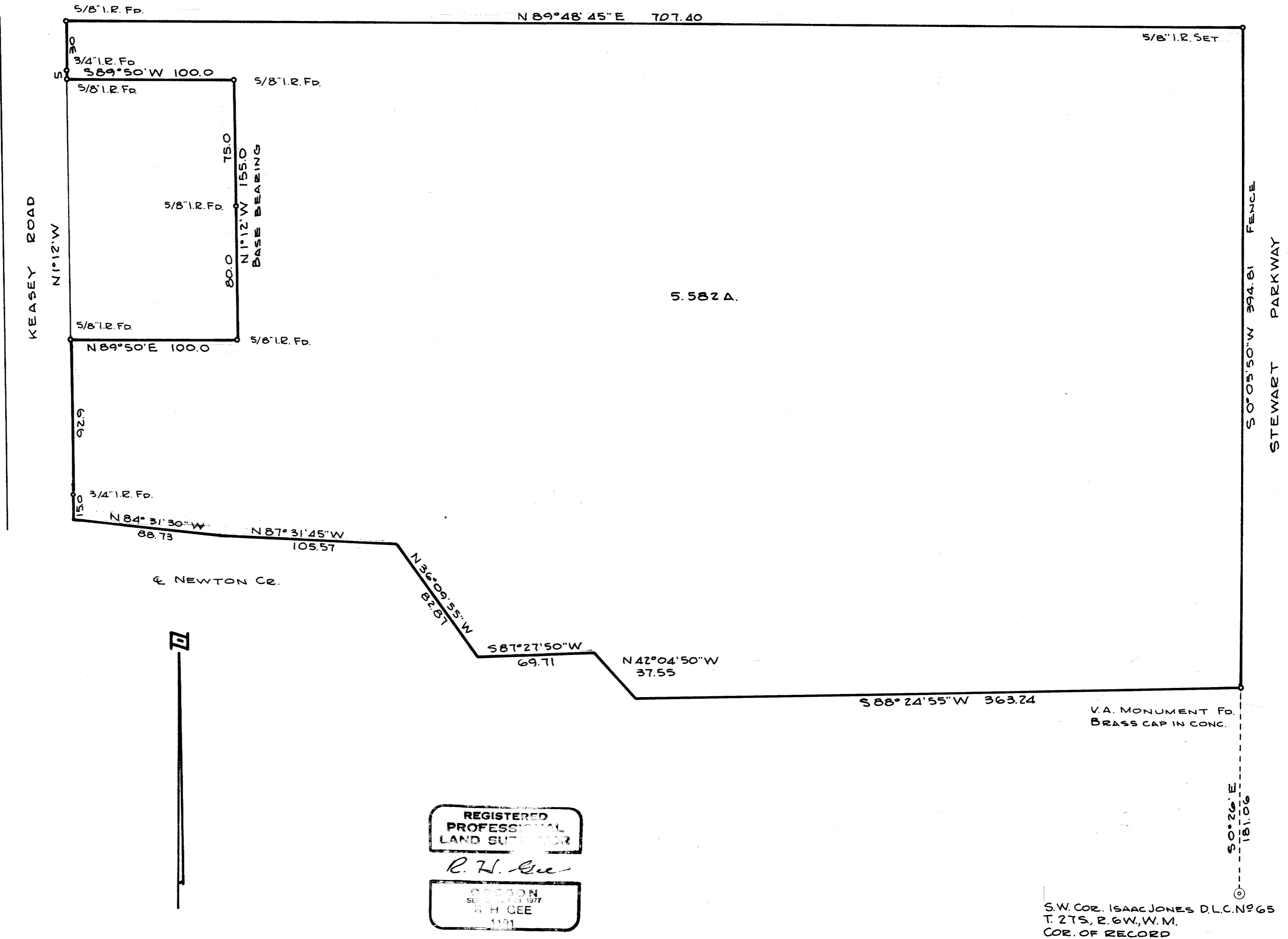
FILED ✓
 RECEIVED *W*

AUG 28 1978

COUNTY SURVEYOR
 WASHINGTON COUNTY, ORE.

T (✓)

MAP FILE M 198 - 23



MAP FILE M 198 - 23