

COUNTY SURVEYORS FILE DATA
DO NOT REMOVE FROM OFFICE

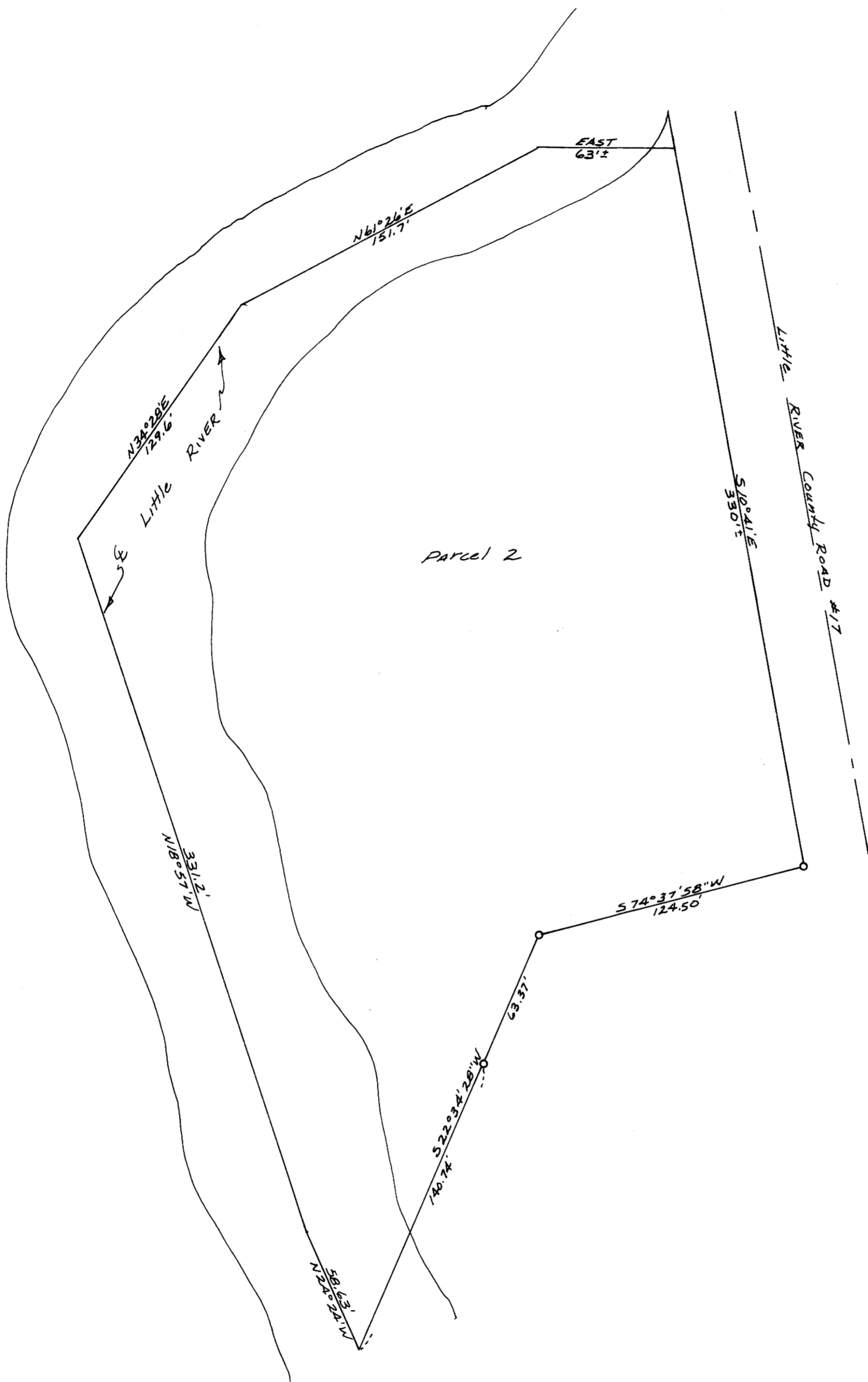
MORBERG MINOR Land Partition

FILED *J*
RECEIVED *JHT*

AUG 24 1978

COUNTY SURVEYOR
DOUGLAS COUNTY, ORE.

T



Note: Parcel 2 not surveyed. Plotted as per 68-1372B
DEED Records.

Book 3 Page 275A