

COUNTY SURVEYORS FILE DATA  
DO NOT REMOVE FROM OFFICE

FILED  
RECEIVED

AUG 23 1978

SURVEY TO SET PROPERTY CORNERS  
IN S.W. 1/4 SEC. 24, T26S, R4W, W.M.

COUNTY SURVEYOR  
DOUGLAS COUNTY, ORE.  
TB

Surveyed for Bill Woods by Victor M. McLind

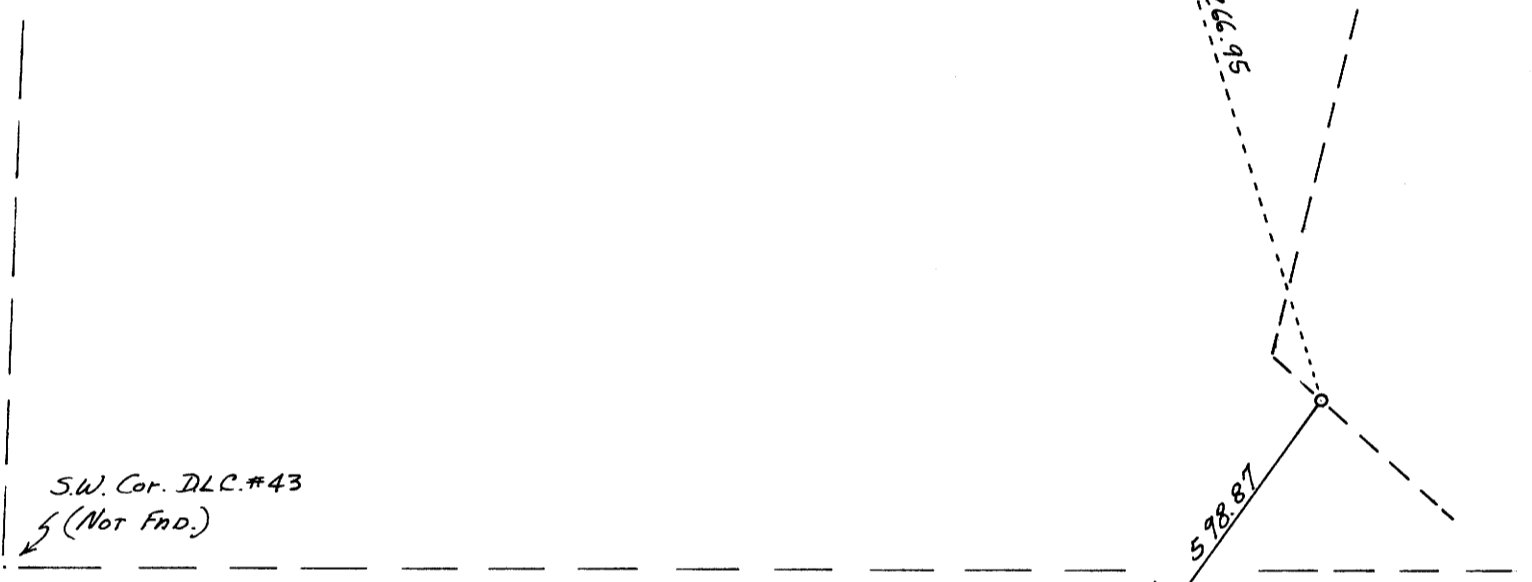
July, 1978

Scale: 1" = 200'

o ~ Indicates Set 5/8" x 30" Iron Rod

BEARINGS BASED ON SOLAR OBSERVATION

Interior "L" Corner DLC.#43  
Fnd. Co. Surveyor's Brass Cap  
as per record



S 10°43'00" E  
104.73

S 14°48'00" W  
144.83

S 36°36'50" W  
198.51

N 63°37'00" W  
477.88

S 46°22'40" W  
655.82

S 35°40'10" W  
598.87

N 17°16'20" W  
426.95

77-11440



REGISTERED  
PROFESSIONAL  
LAND SURVEYOR

*Victor M. McLind*

OREGON  
JULY 17, 1970  
VICTOR M. McLIND  
934