

COUNTY SURVEYORS FILE DATA
DO NOT REMOVE FROM OFFICE

SURVEY TO SET PROPERTY CORNERS IN SEC. 17, T25S, R5W, W.M.
IN LOT 11, BLOCK B, & LOT 1, BLOCK C, PLAT "J", S. L. & W. Co.

Surveyed for Clifford J. & Alma L. Hein

Surveyed by Victor M. McLind

August, 1978

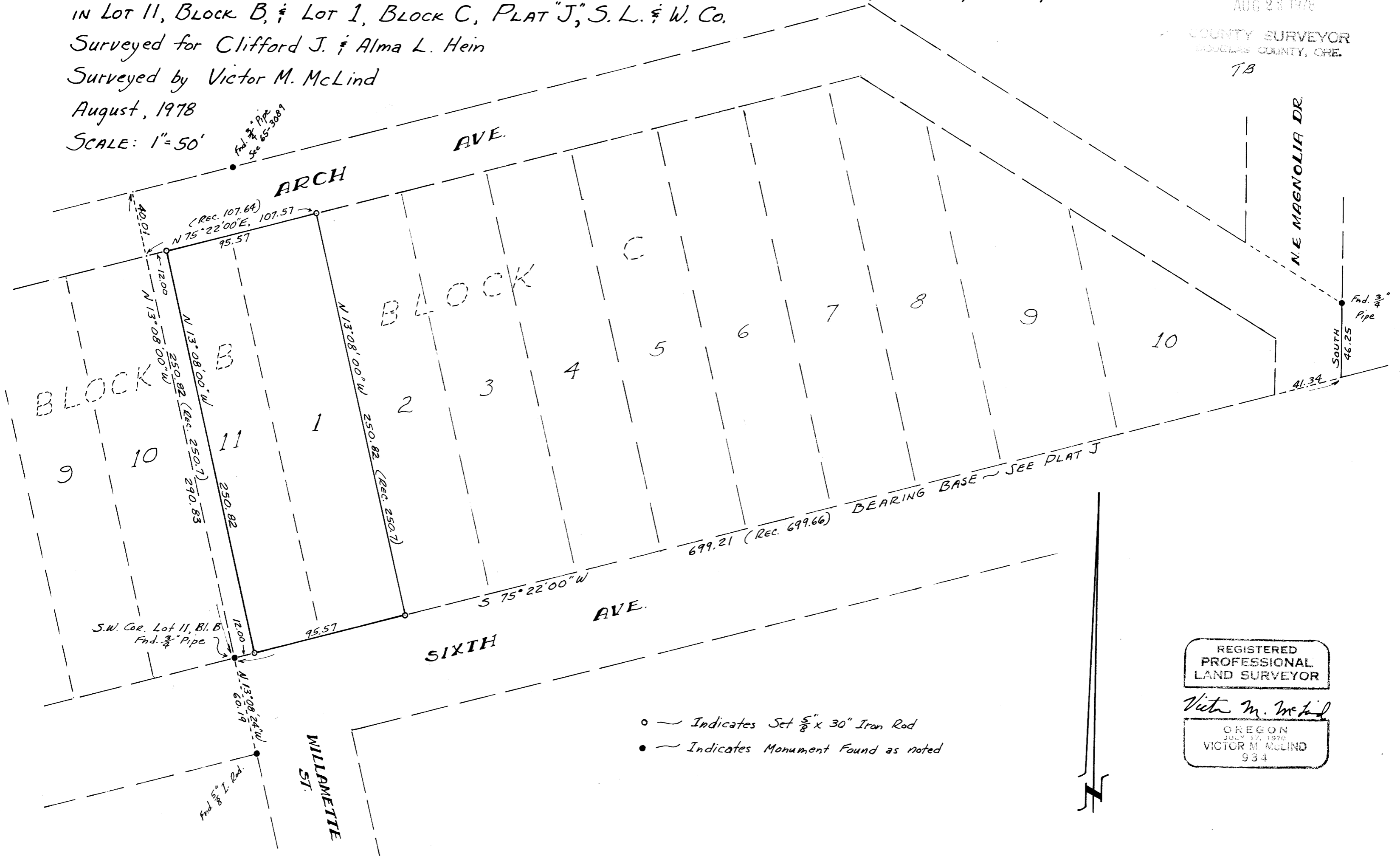
SCALE: 1" = 50'

FILED
RECEIVED

AUG 28 1978

COUNTY SURVEYOR
DOUGLAS COUNTY, ORE.

TB



- — Indicates Set 5/8" x 30" Iron Rod
- — Indicates Monument Found as noted

REGISTERED
PROFESSIONAL
LAND SURVEYOR
Victor M. McLind
OREGON
JULY 17, 1970
VICTOR M. MCLIND
934

MAP FILE M72-68

MAP FILE M72-68