

SURVEY FOR DESCRIPTION

IN LOT 6 EAST SUTHERLIN HEIGHTS-SEC. 16 T25SR5WWM

FOR: GEORGE STILLWELL JR.

BY: BAUGHMAN TECHNICAL SERVICES INC

AUGUST 1978

SCALE: 1"=20'

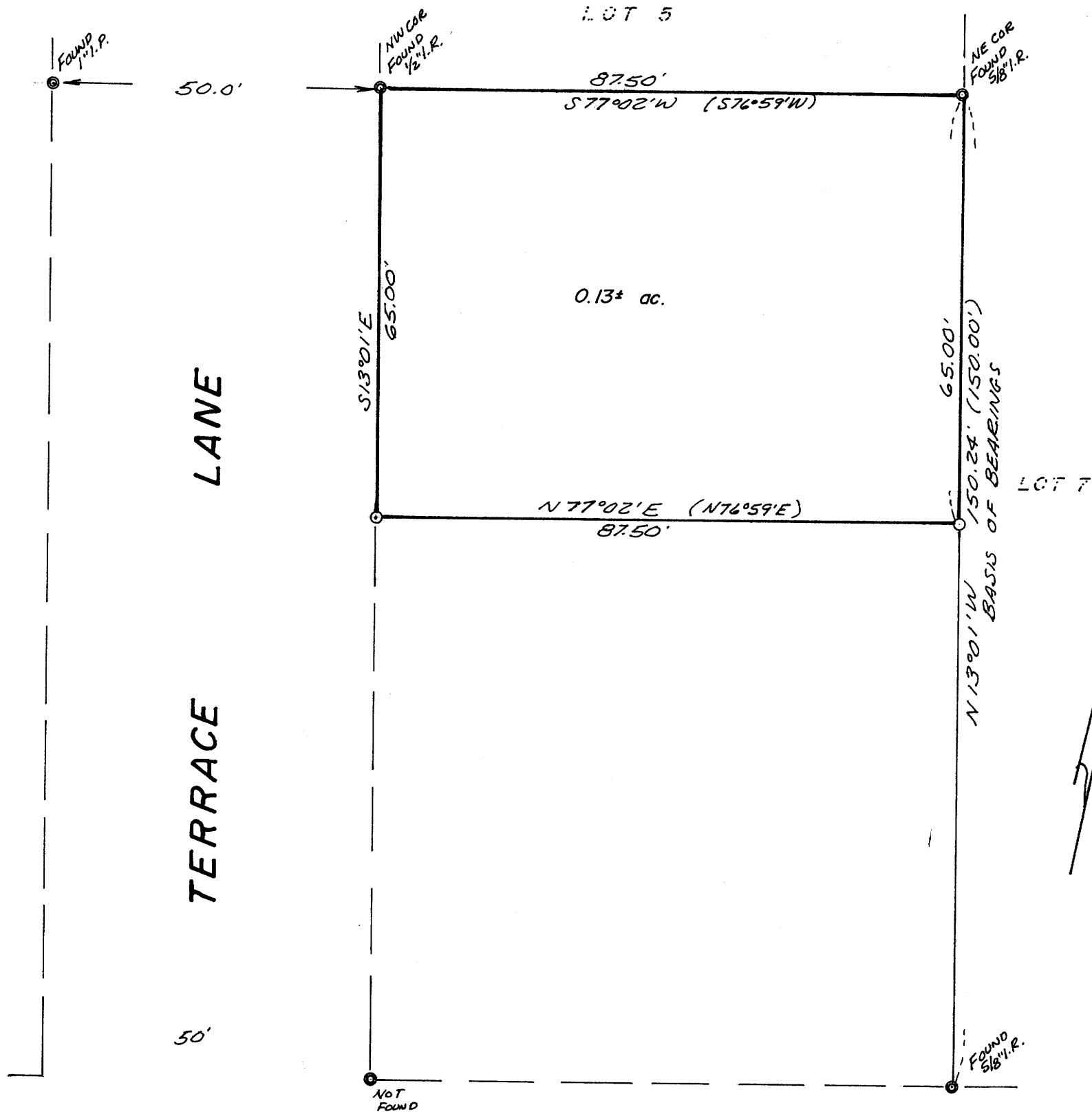
FILED *d*
RECEIVED *jh*

AUG 23 1978

COUNTY SURVEYOR
DOUGLAS COUNTY, ORE.

JB

- — Set 1/2 iron rod
- — Point Found, as noted



REGISTERED
PROFESSIONAL
LAND SURVEYOR

Glenn S. Baughman

OREGON
JULY 12, 1981
GLENN S. BAUGHMAN
536

COUNTY SURVEYORS FILE DATA
DO NOT REMOVE FROM OFFICE