

COUNTY SURVEYORS FILE DATA
DO NOT REMOVE FROM OFFICE

SURVEY FOR D.P. SISCO

IN
LOT 11, BLOCK 3, BENDER'S SUBDIVISION
SECTION 21, T. 28S. R. 6W. W.M.

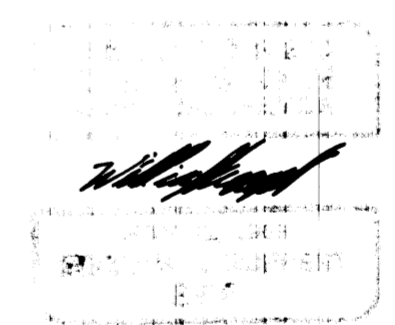
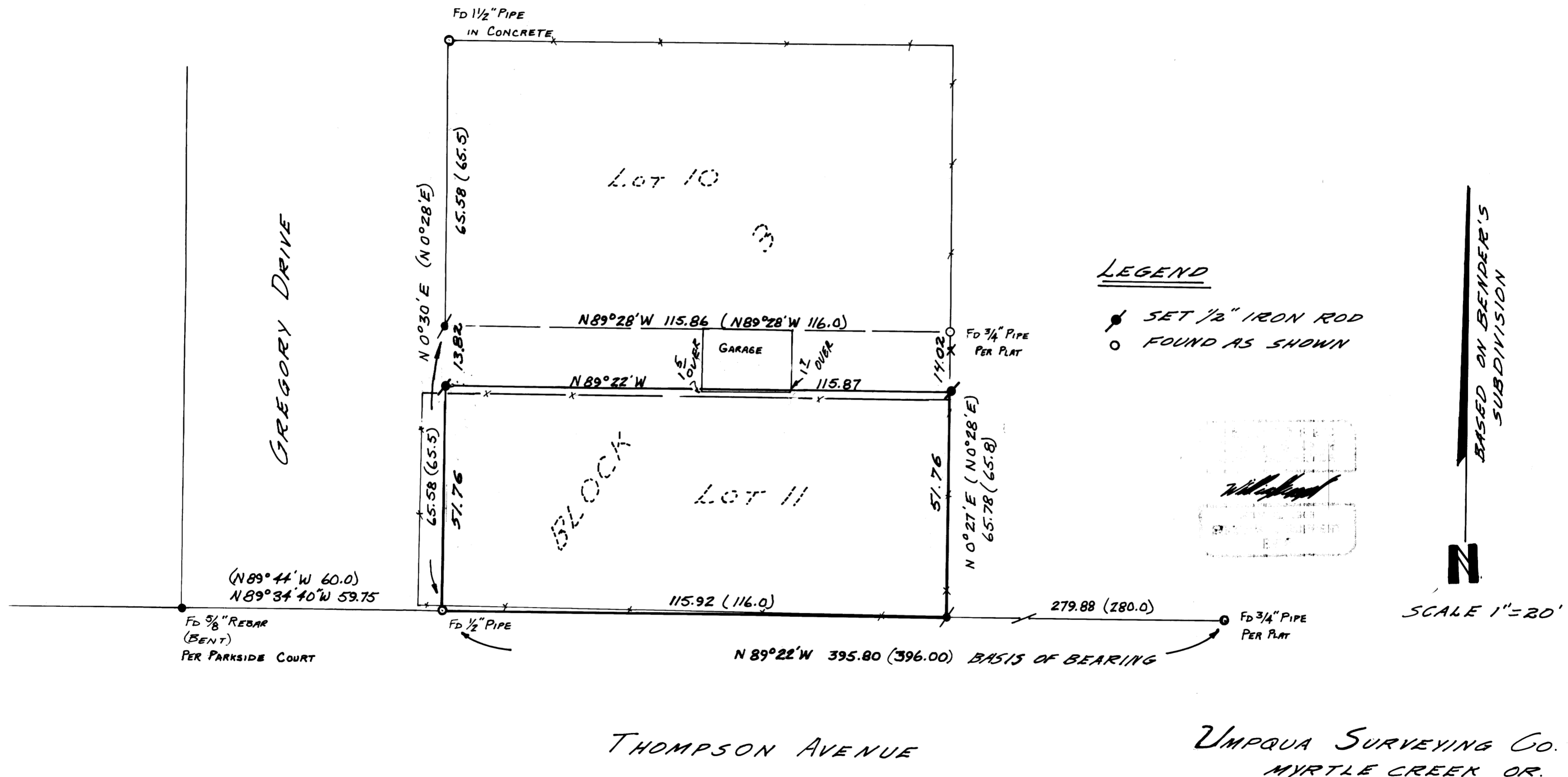
JULY 1978

FILED
RECEIVED

AUG 21 1978

COUNTY SURVEYOR
DOUGLAS COUNTY, ORE.
TB

MAP FILE M.72 - 64



MAP FILE M.72 - 64