

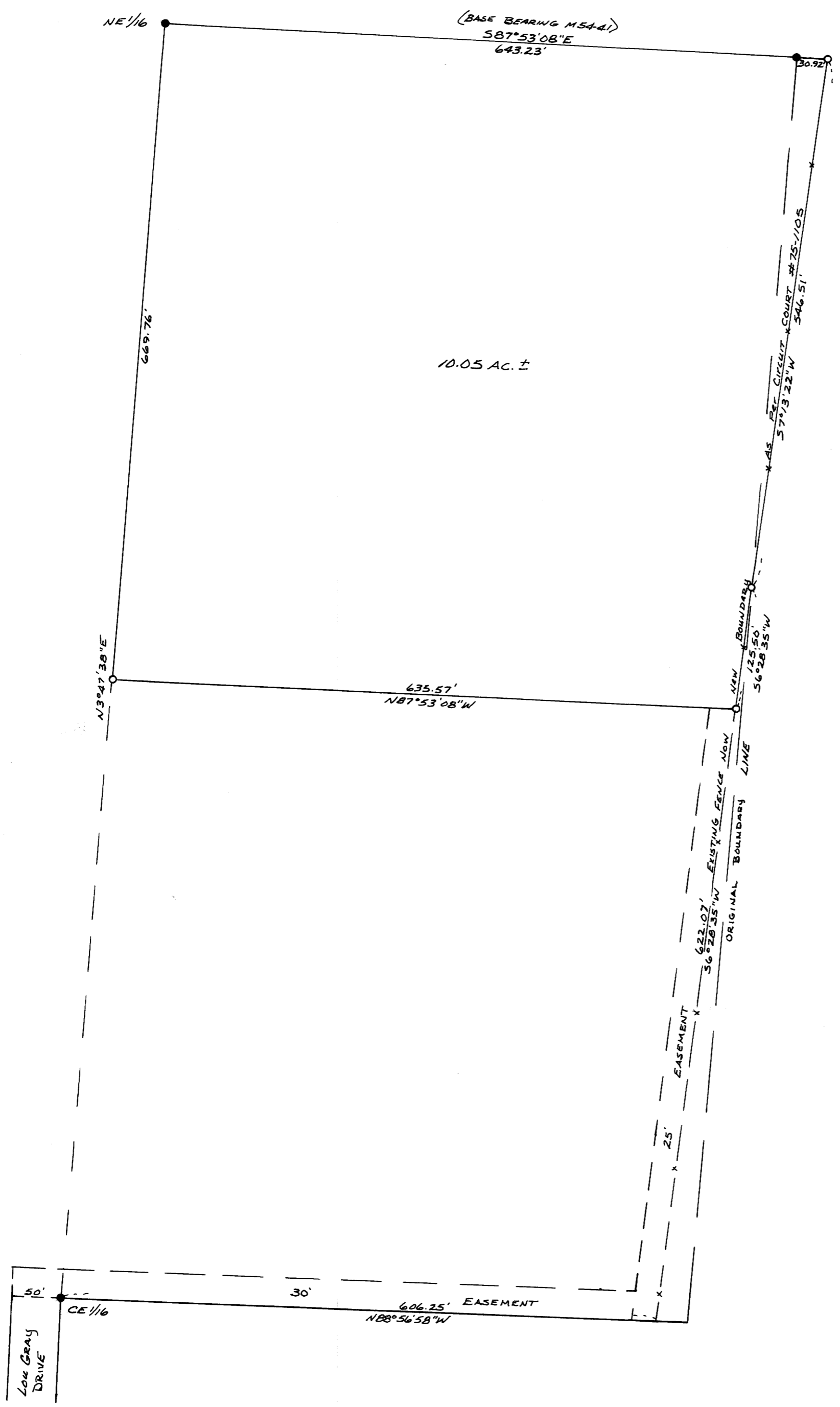
COUNTY SURVEYORS FILE DATA
DO NOT REMOVE FROM OFFICE

SURVEY IN SECTION 17, TOWNSHIP 30 SOUTH, RANGE 5 WEST, W.M.
Surveyed for Clyde George by Bruce Rogers
August, 1978
Scale 1" = 100'

FILED
RECEIVED JHH

AUG 25 1978

COUNTY SURVEYOR
DEUELAS COUNTY, ORE.
JHH



REGISTERED
OREGON
LAND SURVEYOR

Bruce R. Rogers

JULY 10, 1964
BRUCE R. ROGERS
660