

COUNTY SURVEYORS FILE DATA

DO NOT REMOVE FROM OFFICE

# SURVEY FOR SELMAR HUTCHINS

IN LOT 7 BLOCK<sup>2</sup> PLAT-0, SUTHERLIN LAND & WATER CO., SEC. 19 T.25S. R.5W.W.M.

BY: BAUGHMAN TECHNICAL SERVICES INC.

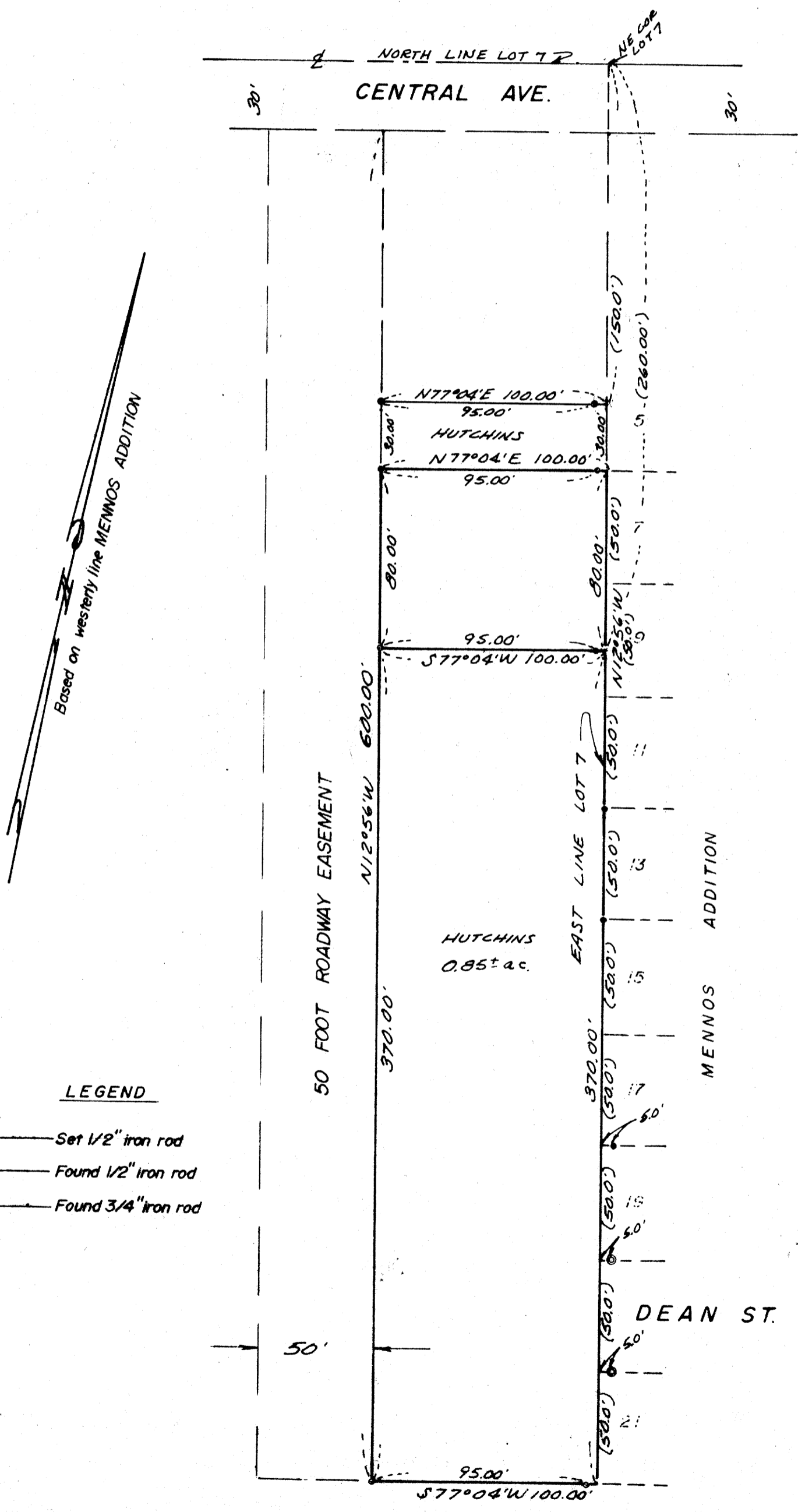
MAY 1978 — SCALE: 1" = 50'

REVISED JULY 28, 1978 Eab

FILED  
RECEIVED

AUG 8 1978

COUNTY SURVEYOR  
DOUGLAS COUNTY, ORE.  
TB



### LEGEND

- — Set 1/2" iron rod
- — Found 1/2" iron rod
- ⊙ — Found 3/4" iron rod

REGISTERED  
PROFESSIONAL  
LAND SURVEYOR

*Glenn S. Baughman*

OREGON  
JULY 14, 1951  
GLENN S. BAUGHMAN  
530

FM 4-790